


# DESIGNING AND PRINTING POSTERS AT GIOS INFORMATICS LAB

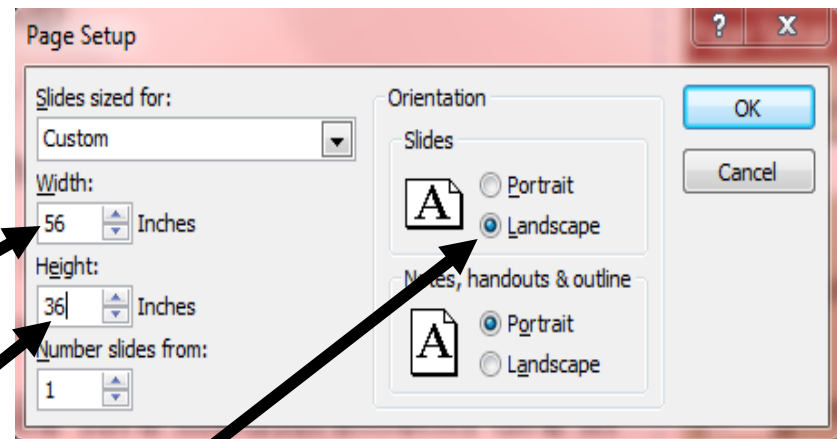
Cindy D. Zisner

Technology Support Analyst

- 
- Today, posters are much easier to create and print with the use of computers and large-format printers.
  - This presentation provides tips using PowerPoint and printing to the GIOS Informatics Lab large-format printer.
  - Tips given here are for Microsoft Powerpoint 2007.

# Setting Page Size

- It is advisable to set your page size before actually placing items on your poster, so items don't shift after you have nicely set them in place.
- Go to the Design tab, then Page Setup
- Set Width equal to 56 or less inches (that's the max)
- Set Height equal to 36 (also the max because of printer limitations)
- Make sure measurements are in inches **not centimeters or pixels**
- Under Orientation select Slides to Landscape



# Reading Your Poster

- Your poster is telling a story of your work
- Design an easy-to-follow format
- Generally, we read left to right and top to bottom
- Use large enough characters; usually no smaller than 18 point

# Title and Authors

- Title and authors are important
- Letter size for the title should be from 1-2 inches (72-144 points)
- Authors' names and affiliations may be smaller to save space
- Use full names and addresses (this is specific to CAP LTER posters)

# Other Format Tips

- Font refers to the style of the lettering, e.g., Times Roman or Arial, an easy-to-read sans serif font
- Point size refers to the size of the characters
- Normal reading point size is 12 pt and this presentation is 24 pt so you can see the difference (when viewing at 100%)
- Point size for the body of your poster should be readable from a distance of 4-5 feet
- Minimum size of 18 point is best and more line spacing makes reading easier
- Don't be afraid to use "white space" to emphasize and make your poster more readable

# Graphics



- The graphics that you use on your poster should have a minimum resolution of 150 dpi; a higher resolution is sharper
- Don't overuse bright colors that distract from your data
- Color can be used to accent and improve clarity of graphs but minimize the use of red and green because of colorblindness

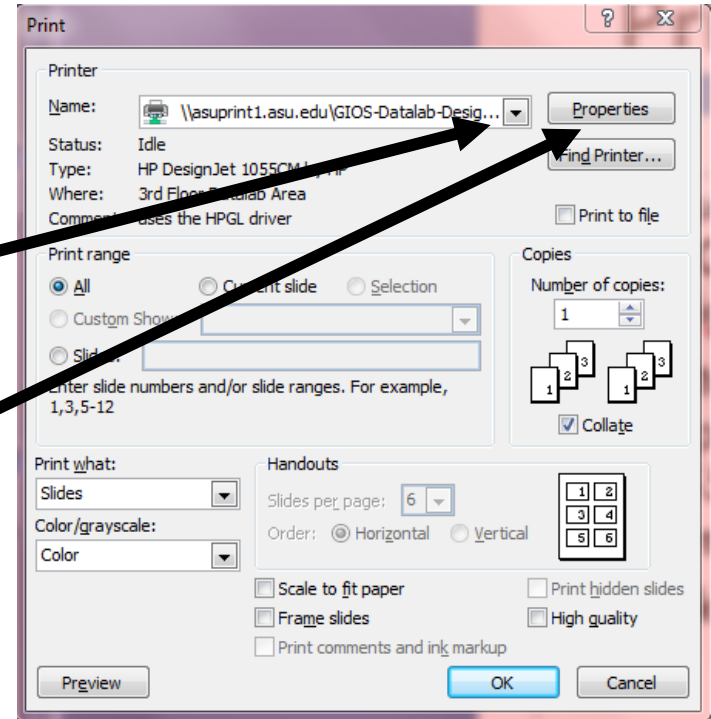
# Saving Your Poster

- It is advisable to save your poster periodically as you work on it
- Do not save to the C drive of the machines in the Computer Lab
- Save on your thumb drive



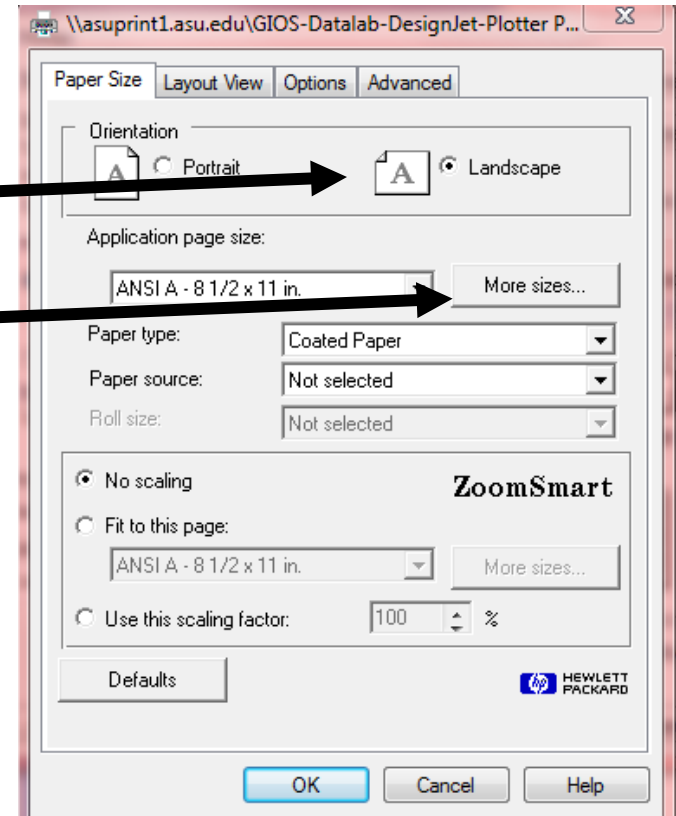
# Printing Your Poster

- These instructions are specific to the GIOS Data Lab HP DesignJet large-format printer
- Go to File, Print, and select “\\asuprint1.asu.edu\GIOS-Datalab-DesignJet-Plotter” from the pull-down menu
- Click on Printer Properties



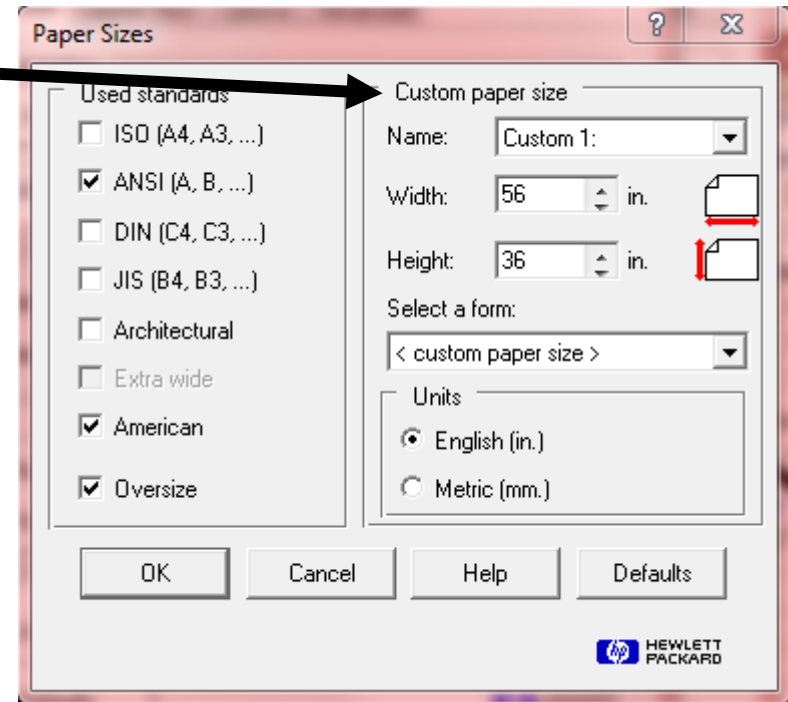
# Printer Properties

- On the Paper Size Tab select Landscape (unless your dimensions are meant to be portrait with 36 inches being the width)
- Click on More sizes to create your specific size



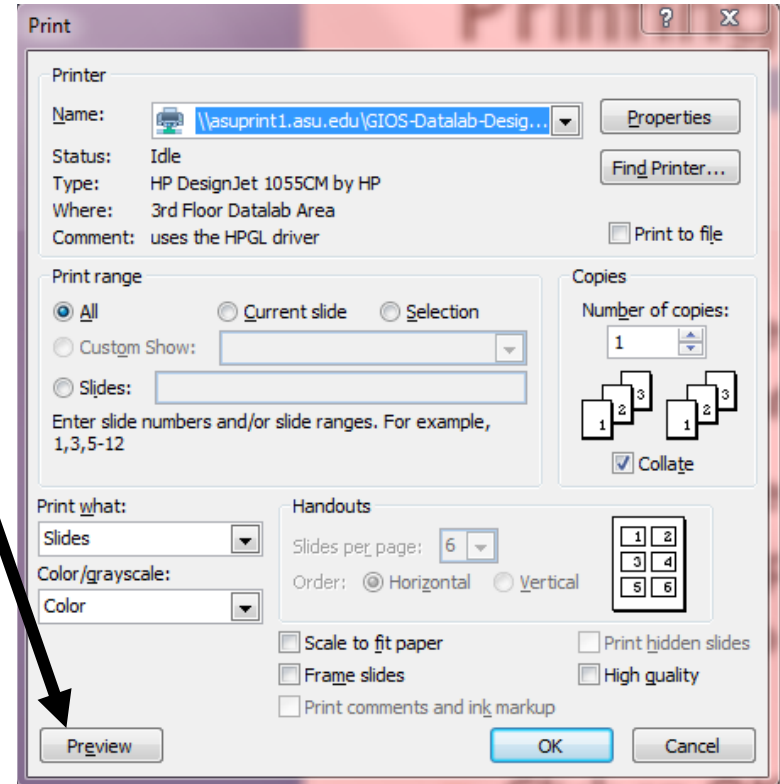
# More Sizes Setting

- Under Custom paper size
  - ▣ enter your width to 56 or less, depending on what you set your Page Height to in Page Setup and
  - ▣ Height to 36 or less, depending on what you set your Page Width to in Page Setup
- Click OK twice to go back to the Printer



# Printing

- You can Preview your poster before printing
- From Preview you can click on Print to print or Close to get back to this Print dialog box
- Click on OK to print



# After Printing

- For CAP LTER Poster Symposium participants, please submit an electronic copy of your poster to [Cindy.Zisner@asu.edu](mailto:Cindy.Zisner@asu.edu) (only if <1Mb). If larger please contact to make arrangements.
- Instructions for putting up poster at Symposium will be sent to you.
- Your final poster will be put on the CAP LTER website as a pdf

# Things to Remember

- Make sure your poster is easy to follow – most people read left to right and top to bottom
- Font size and line spacing are important for readability
- Color can and should be used for emphasis but don't overdo
- Posters are often mounted on tack boards with push pins so do not trim off the white margin so you have a place for pins rather than directly on your poster