

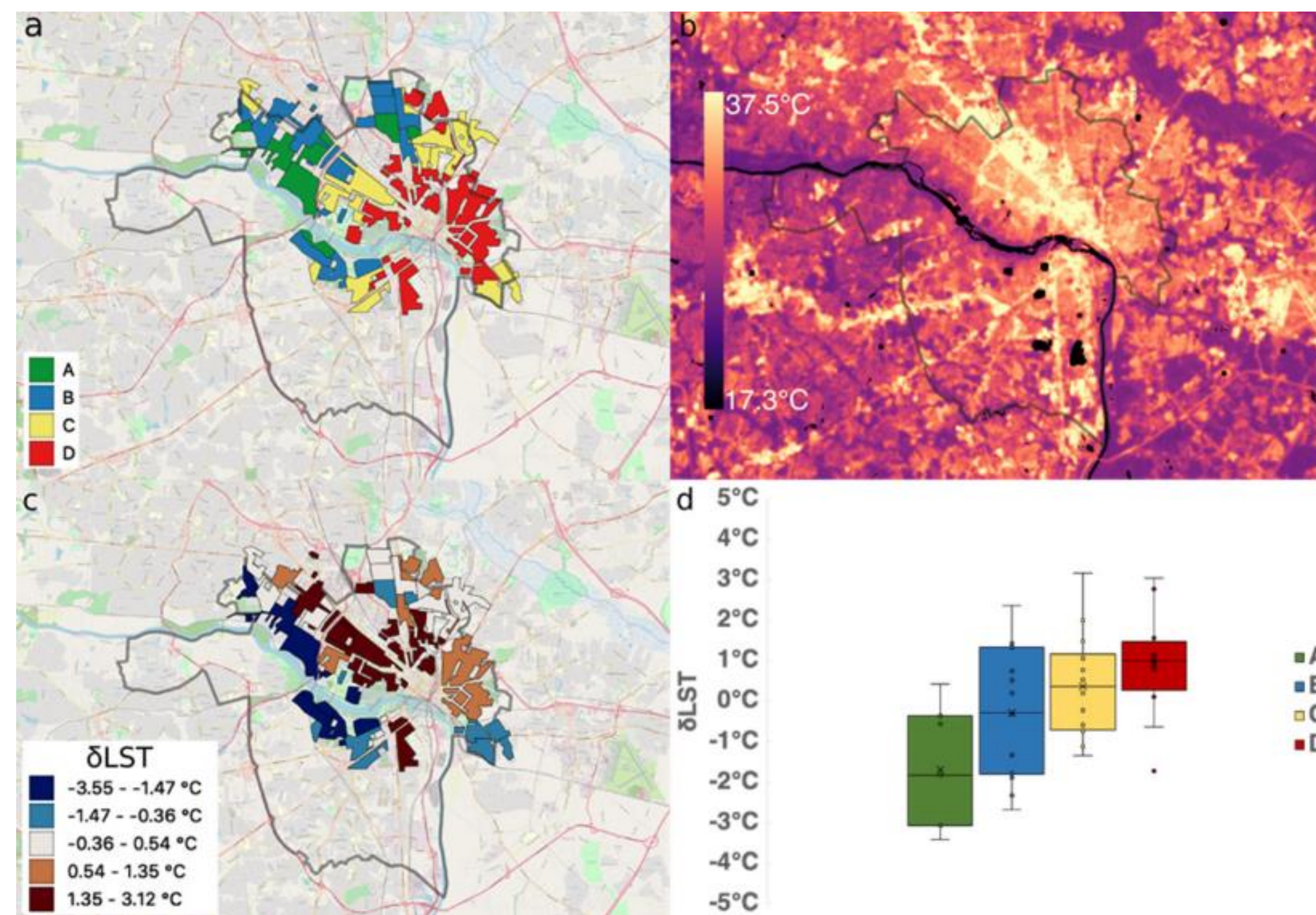
The Climate Consequences of Privatizing Public Spaces

Zachary Van Tol¹, Jennifer Vanos¹, Ariane Middel², and Kristin Ferguson³

¹School of Sustainability, Arizona State University; ²School of Arts, Media and Engineering, Arizona State University; and ³School of Social Work, Arizona State University

Historical Context

- Although a relatively new scientific revelation, inequitable climate exposures by design have plagued many cities, including Phoenix, since their conception (Bolin, 2005).



Source: Hoffman et al., 2020

- Most prominently, disbursement of heat and pollution were found to disproportionately impact lower income and minority communities (Hoffman et al., 2020).

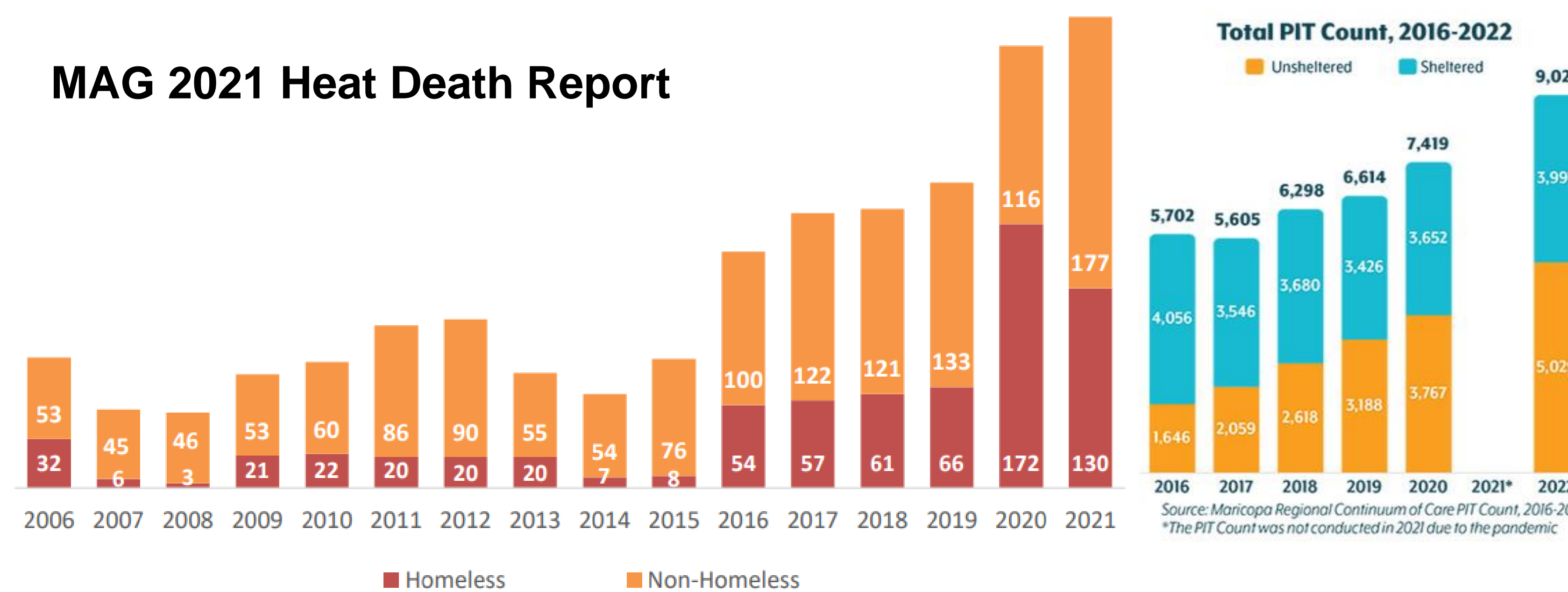
Research Gaps

- Broad focus on housed communities, ignoring those most exposed to the climate consequences of city design.
- Tendency towards historical analysis, neglecting the opportunity for critiques of modern policy making outcomes.

Dereliction of Duty

- Nearly 3,100 individuals identified as unsheltered within the city of Phoenix during the 2022 Housing and Urban Development-mandated Point-in-Time count (MAG, 2022).
- The city severely lacks the number of beds required to accommodate those in need of temporary shelter, last counted at roughly 1,800 in 2021 (City of Phoenix, 2021).

MAG 2021 Heat Death Report



- In conjunction with the rise in unsheltered homelessness, heat deaths remain at unacceptable, and increasing, levels (MAG, 2021).

Contemporary Setting

- Tempe's "Accelerated Encampment Response Program" has removed people from the Rio Salado riverbed (City of Tempe, 2022).



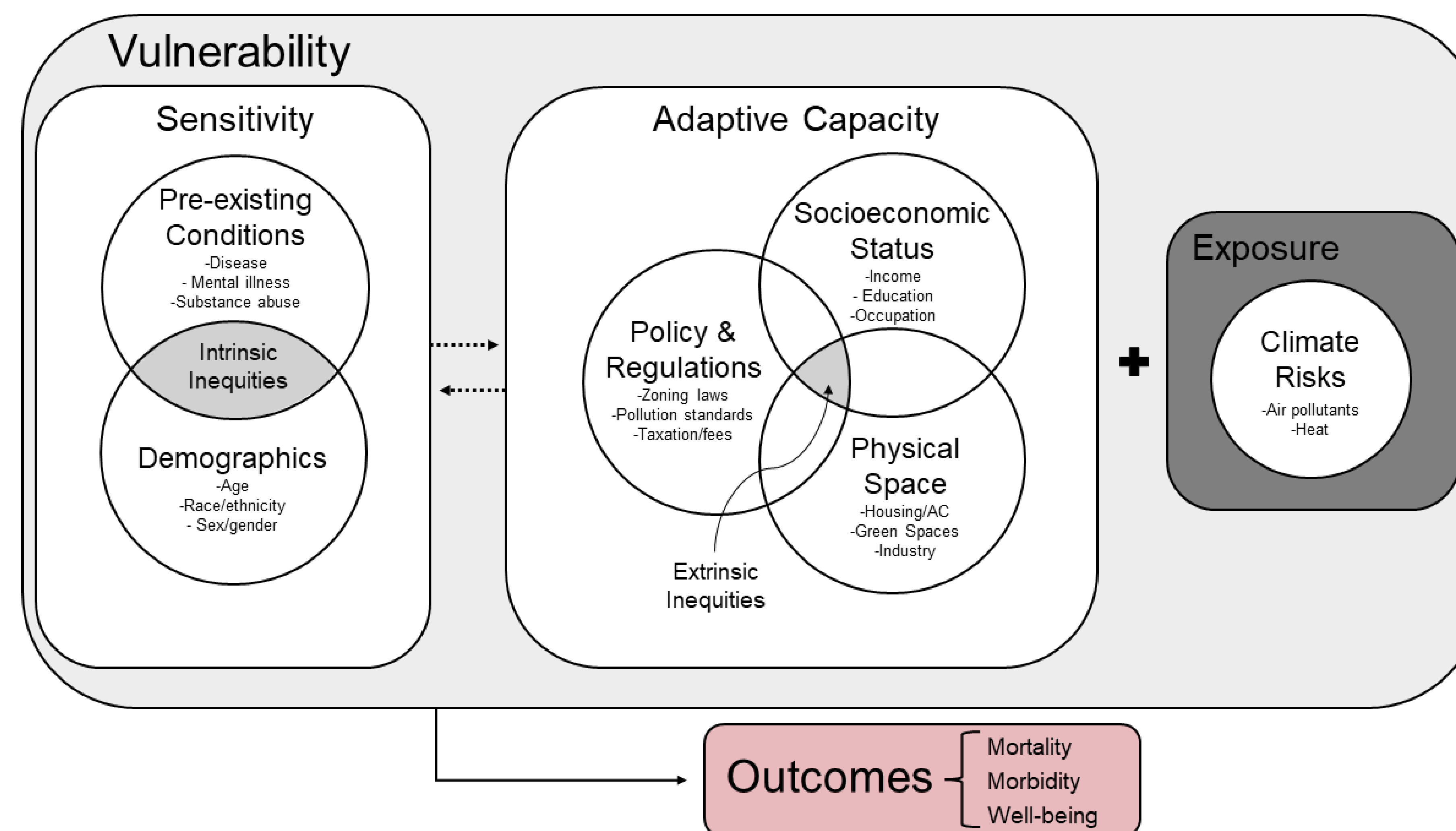
Joel Angel Juarez/The Republic

- Jurisdictions have hired private security at the request of housed residents, further limiting alternative spaces for unsheltered people to seek respite (Wong, K., 2022).

Questions of Interest

- How does the regulation of public spaces alter climate exposures among people who are experiencing unsheltered homelessness?
- What are the health implications of climate exposures in the different areas policy permits people who are facing unsheltered homelessness to reside?

Theoretical Framework



Citations:
 Bolin, Bob, Sara Grineski, and Timothy Collins. "The Geography of Despair: Environmental Racism and the Making of South Phoenix, Arizona, USA." *Human ecology review* 12, no. 2 (2005): 156-168. Link: https://www.jstor.org/e2proxy1.lib.asu.edu/stable/24707530?seq=1#metadata_info_tab_contents
 City of Phoenix. (2021, February 3). *City Adds Shelter Beds, Invests in Solutions for Homelessness*. <https://www.phoenix.gov/newsroom/human-services/1742>
 City of Tempe. (n.d.). *Accelerated Homeless Response*. <https://www.tempe.gov/government/human-services/housing-services/ending-homelessness/encampment-response/fsiteid-1>
 Hoffman, J. S., Shandas, V., & Pendleton, N. (2020). The Effects of Historical Housing Policies on Resident Exposure to Intra-Urban Heat: A Study of 108 US Urban Areas. *Climate*, 8(1), Article 1. <https://doi.org/10.3390/cli8010012>
 Kmack, S. (2022, September 7). "We have nowhere to go": Tempe cracks down on homeless camps in Rio Salado riverbed. *Azcentral*. <https://www.azcentral.com/story/news/local/tempe/2022/09/07/tempe-homeless-encampment-rio-salado-riverbed/7950573001/>
 Maricopa Association of Governments. (2021). *Heat-Associated Deaths in Maricopa County, AZ Final Report for 2021*. <https://www.maricopa.gov/DocumentCenter/View/74257/Final-2021-Heat-Deaths>
 Maricopa Association of Governments. (2022). *2022 Point in Time (PIT) Count Report*. <https://azmag.gov/Portals/0/Documents/MagContent/2022-PIT-Count-Report-Final.pdf?ver=mHByGa3hNtmeOOfMzxtA%3d%3d>
 Wong, K. (2022, November 2). Phoenix City Council approves plan to place private security at parks. *FOX10*. <https://www.fox10phoenix.com/news/phoenix-city-council-approves-plan-to-place-private-security-at-parks>