

Arizona Department of Environmental Quality

Water Quality Improvement Grant Program



Who am I?

- Samuel “Jake” Breedlove
 - Grant & Watershed Coordinator
 - Arizona Department of Environmental Quality



Water Quality Improvement Grants

- Federal funding provided by EPA
- Clean Water Act Section 319(h)
- Administered by ADEQ as a reimbursement-based grant program
- Funds are used to implement on-the-ground water quality improvement projects to reduce nonpoint source pollution



Who can apply?

- Private landowners
- State, Federal, Local Governments
- Universities
- Tribes
- Environmental Groups
- Watershed Groups
- Schools, Colleges, Universities
- Non-profit Organizations
- Individuals



General Grant Requirements

- On-the-ground implementation emphasis
- Education and outreach components encouraged
- 40% non-federal match
- **Funding is only available for waterways designated as impaired by ADEQ**



What does it mean when a water is “impaired”?

- Arizona's Integrated 305(b) Assessment and 303(d) Listing Report describes the status of surface water in Arizona in relation to state water quality standards.
- 303(d) Listing Report if it does not meet the water quality standards associated with its designated use(s).
- 305(b) Category 4a represents areas that do not meet water quality standards and have a TMDL



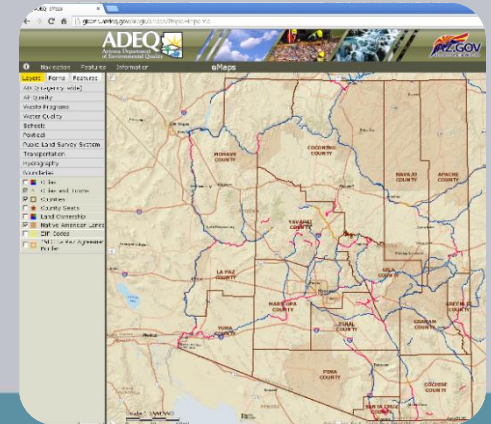
Is there an
easier way?
Yes

View the Integrated Assessment and Listing Report online at
<http://www.azdeq.gov/enviro/water/assessment/assess.html>

Is my area impaired?



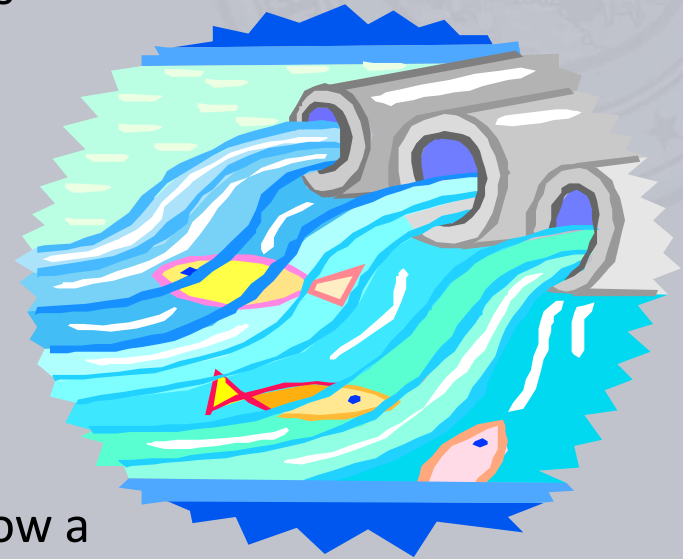
- The full 303(d) and 305(b) lists can be viewed on the azdeq.gov website
- Find you area on [GIS eMap](#)



Projects Not Eligible for Funding

- Point source or water quantity focused projects
- **Projects designed to comply with a permit***
- Projects considered day to day operation and maintenance
- Projects that address a symptom of pollution without addressing the source of pollution
- Projects that would relieve enforcement and compliance actions
- Research-only projects
- Applications that are incomplete or do not follow a format specified in the current RFGA
- Applications received by ADEQ after the deadline specified in the current RFGA

*refers to NPDES and AZPDES permits and other point source permits



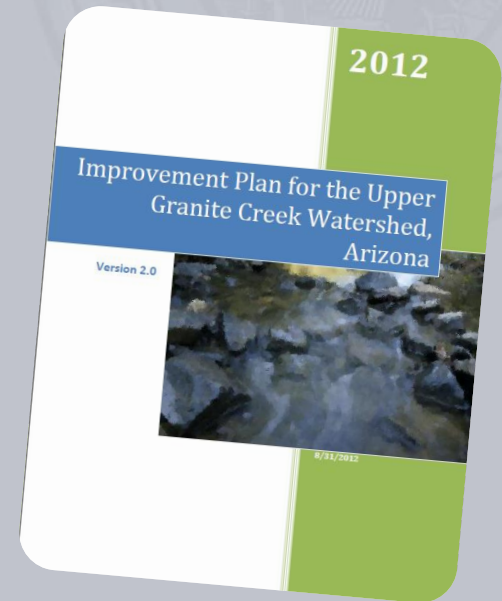
Stormwater Project Criteria

- **B.12. Stormwater Project Criteria for Private Property**
- **319 Funding for Stormwater Projects Criteria**
 - Projects seeking 319 funding to implement projects with an MS4 permitted area must meet the following criteria to be eligible:
 - Project site must be on private property
 - Project must utilize Low-Impact Development (LID) and/or Green Infrastructure to treat runoff from private property
 - Projects must address an impairment-causing pollutant
 - Project must treat runoff from private property
 - **Projects not eligible**
 - Projects required for compliance actions
 - Projects that are enforceable under an existing law or ordinance
 - Projects on property of the MS4 permittee
 - Projects primarily addressing runoff from property of the MS4 permittee *(example: If flooding from a road flows through private property, the MS4 permittee should address the road rather than 319 funding being utilized on private property to mitigate the flooding.)*
 - Any stormwater projects specifically prohibited by EPA's 319 Guidelines



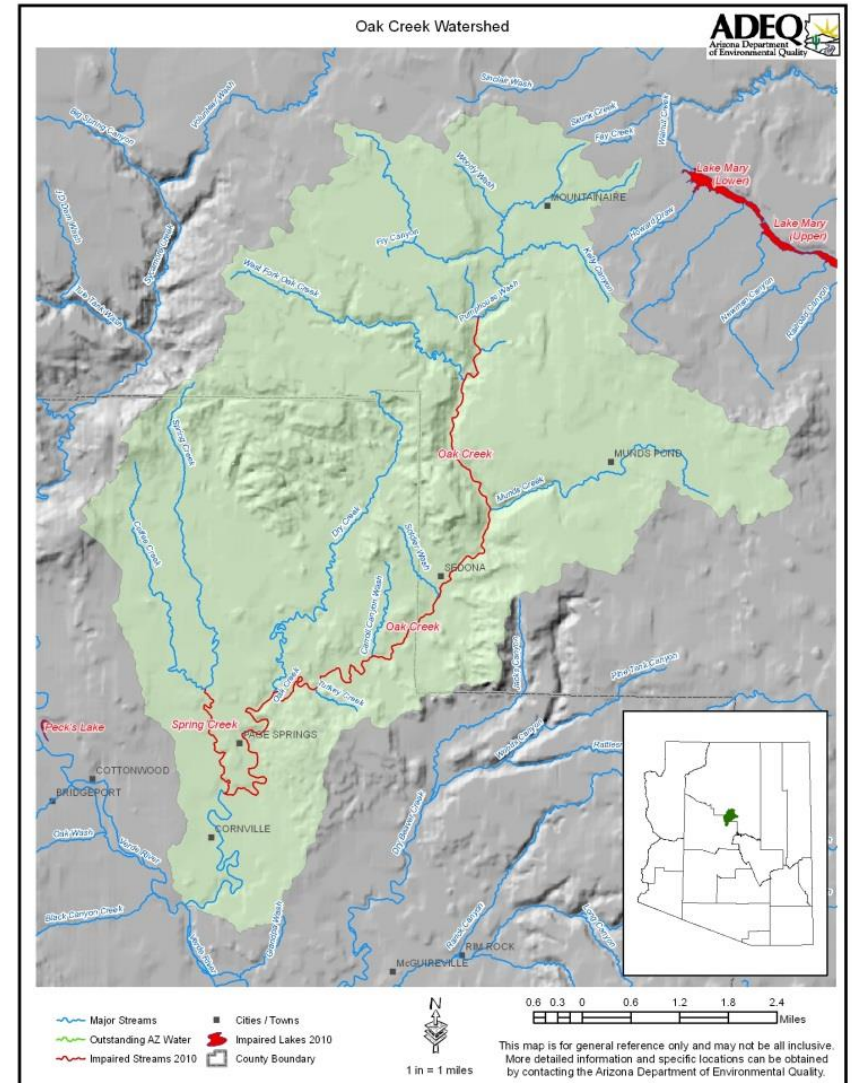
Primary Priority

- Watershed Implementation Plan (WIP) Implementation
 - Four WIP's have been fully developed
 - Oak Creek (headwaters to Spring Creek and the Spring Creek drainage)
 - San Francisco River (Blue River to Limestone Gulch)/Blue River
 - Granite Creek (headwaters to Watson Lake)
 - San Pedro River (from Babocomari Creek to Dragoon Wash).
- All are available on ADEQ website



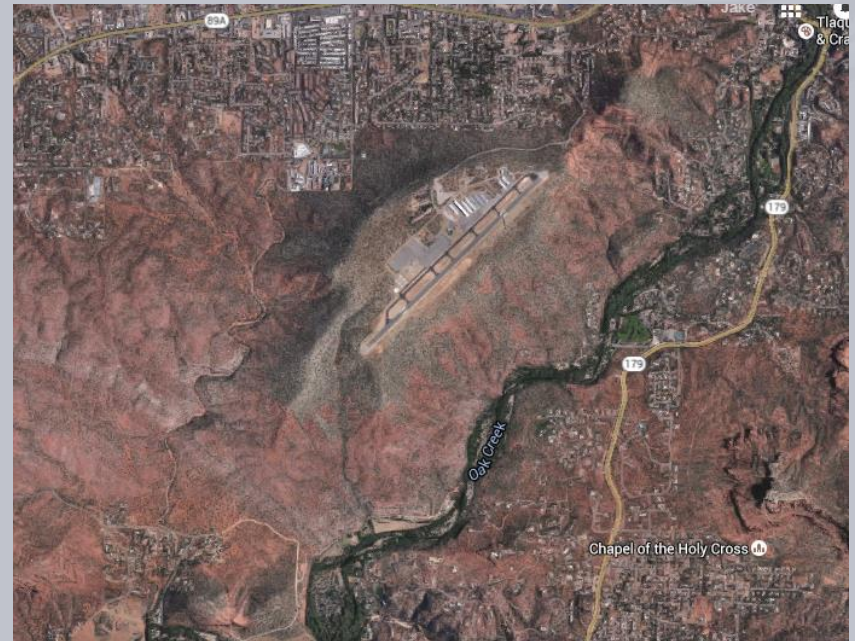
Oak Creek

- Oak Creek (headwaters to Spring Creek and the Spring Creek drainage)
- Impairment(s): *E. coli* bacteria
- Identified sources
 - Recreation
 - Septic Systems
 - Sediment inputs



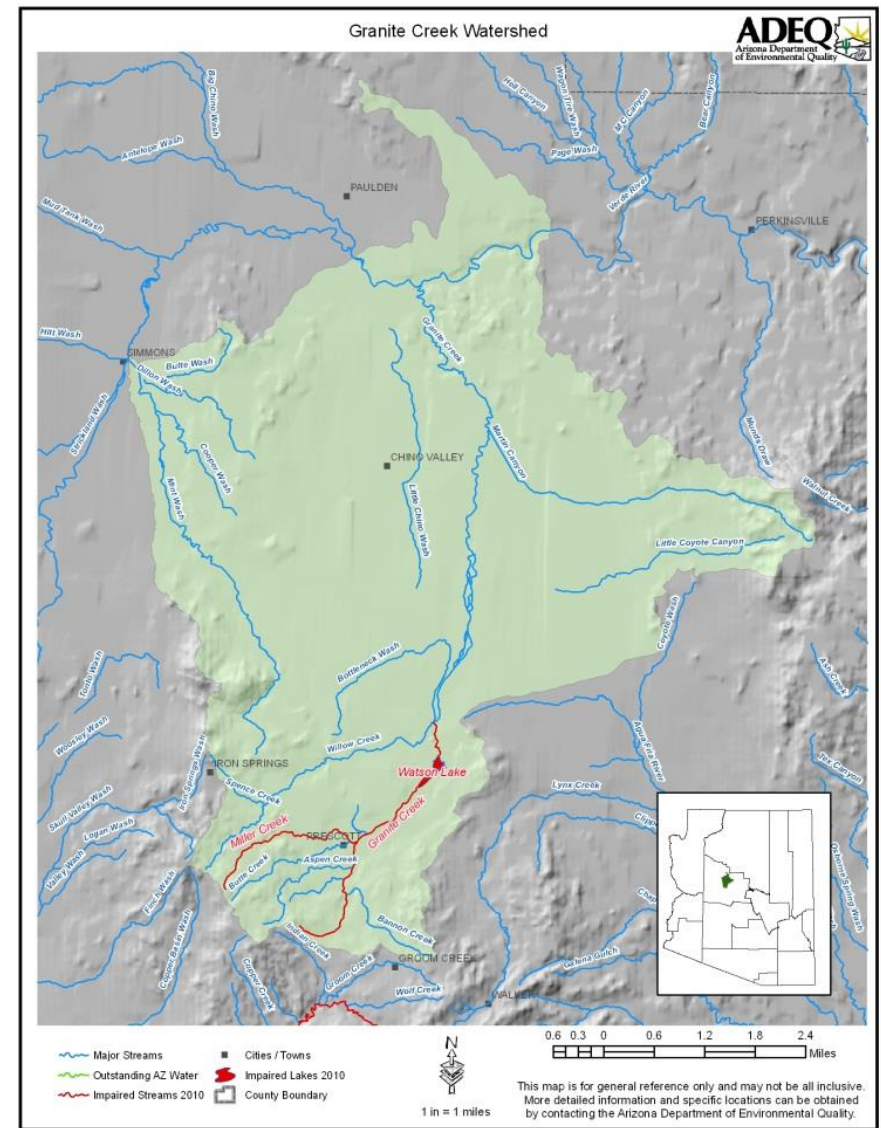
OCWC Settlers Rest Stormwater Pilot Project

- \$120,040 grant awarded
- Provided regionally specific best management practices outlined in the Oak Creek Watershed Improvement Plan



Granite Creek

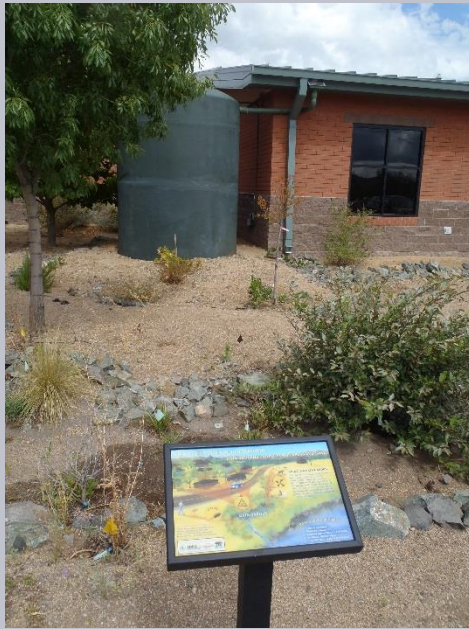
- Granite Creek (headwaters to Watson Lake)
- Impairment(s): Nutrients and *E. coli* bacteria.
- Identified Sources
 - Stormwater runoff
 - Septic Systems



Granite Creek Watershed

- \$455,895 grants awarded
- Design & install green infrastructure at Prescott Community Center
- Design and install green infrastructure at Whipple Street Basin





Watershed-based Plans

- Watershed-based plans are holistic documents that are designed to protect and restore a watershed. These plans provide a careful analysis of the sources of water quality problems, their relative contributions to the problems, and alternatives to solve those problems.

EPA Nine Key Elements

1. Causes and Sources
2. Expected Load Reductions
3. Management Measures
4. Estimate of Financial and Technical Assistance
5. Information/Education to Enhance Public Awareness
6. Schedule for Implementation
7. Measurable Milestones
8. Evaluation of Progress
9. Effectiveness Monitoring

ADEQ Suggests 3 Chapters

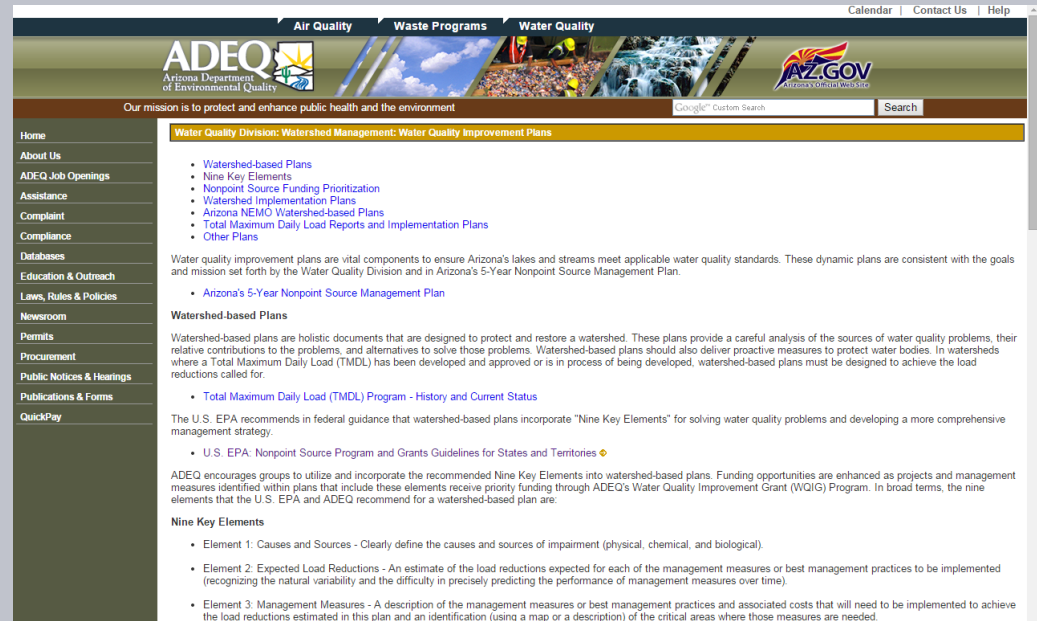
- **Chapter 1 -- Background**
 - Water quality concern and watershed description
 - Past efforts to reduce pollutant loading
 - Plan development
- **Chapter 2 – Watershed Investigation**
 - Field survey methods & findings
 - Potential project sites
 - Cost-effectiveness comparison
 - Load reductions
 - Resources and barriers considered
- **Chapter 3 – Watershed Improvement Strategy**
 - Priority water quality improvement projects
 - Project schedule and milestones
 - Outreach and education
 - Monitoring and evaluating effectiveness

Past

PRESENT

FUTURE

- Additional information can be found at:
<http://www.azdeq.gov/envIRON/water/watershed/plans.html>



Questions?

- Contact Jake Breedlove, ADEQ Grant & Watershed Coordinator
- Email: sb12@azdeq.gov
- Phone: 602.771.4243

Or visit the ADEQ website:
www.azdeq.gov/wqig

Thank you



PERSISTENCE

Little by little, one travels far.

~J. R. R. Tolkien