



Glendale Desert Food Forest

March 5, 2020

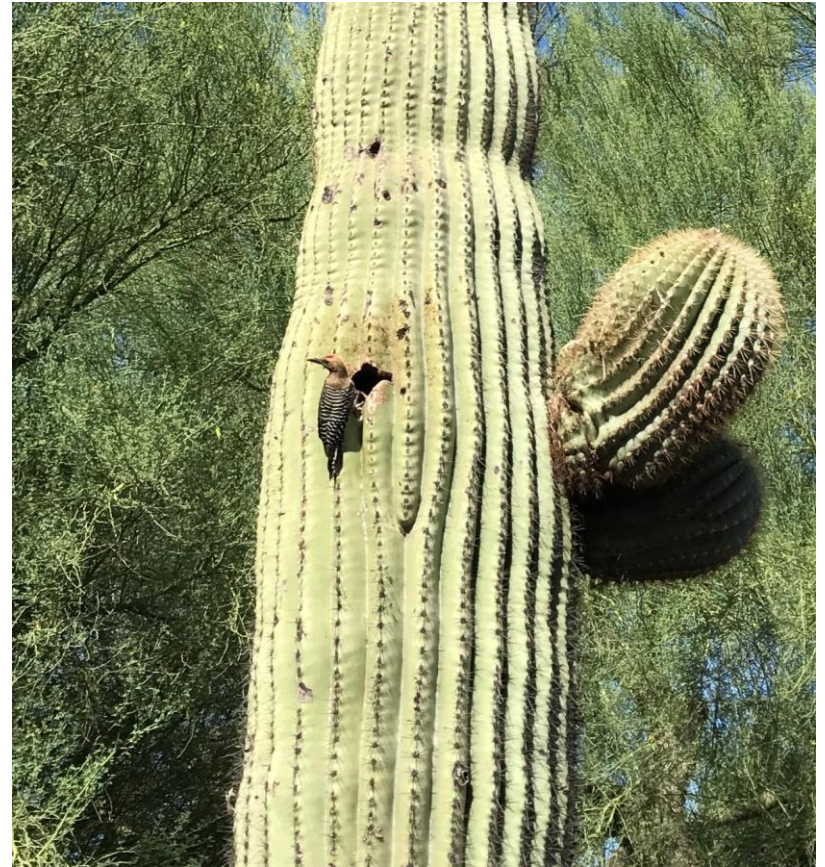
Anne Stahley
Astahley@glendaleaz.com
623.930.3550





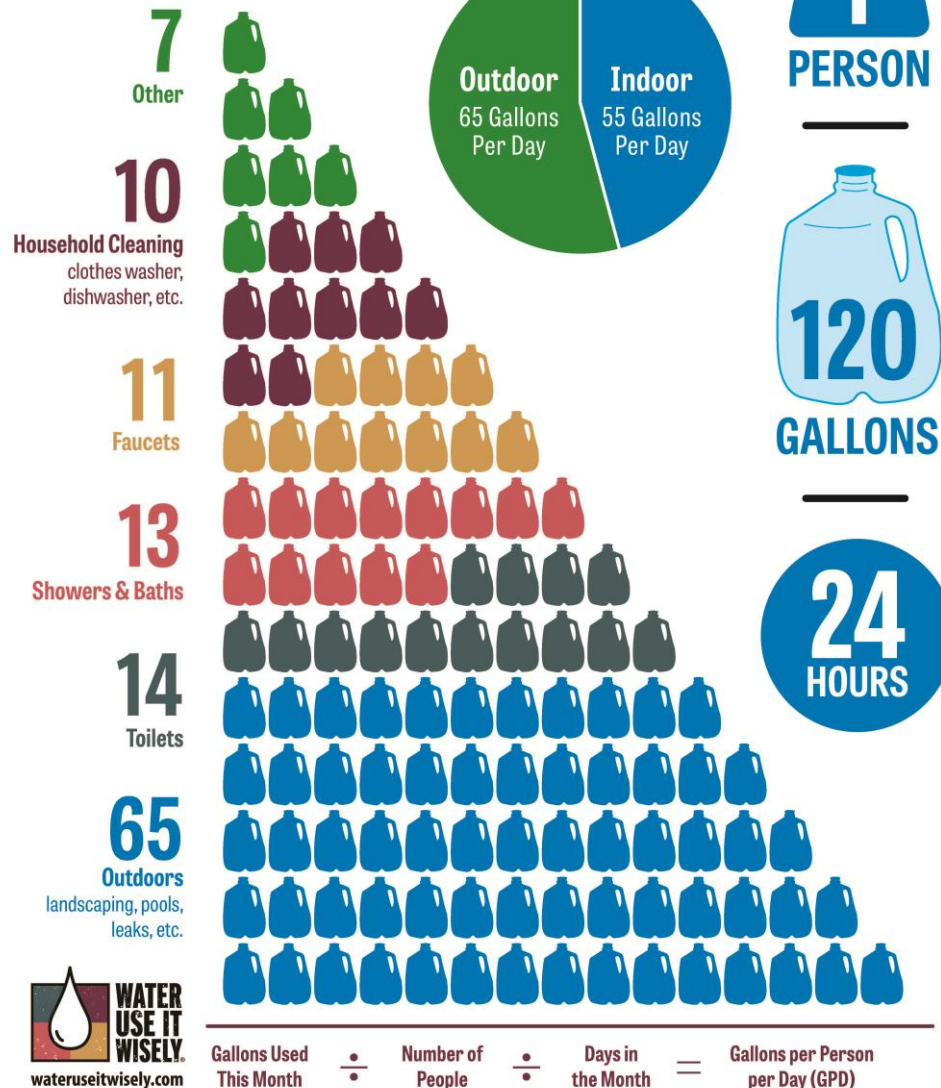
Overview

- Water Use
- Food Forest
- Site and Landscape Design
- Adult & Youth Education
- Final Installation
- Lessons Learned
- Next Steps...





Average Daily Water Usage



Adapted from the Water Research Foundation's Residential End Uses of Water, Version 2 Executive Report (2016)

We Like to Eat!

Can't Eat

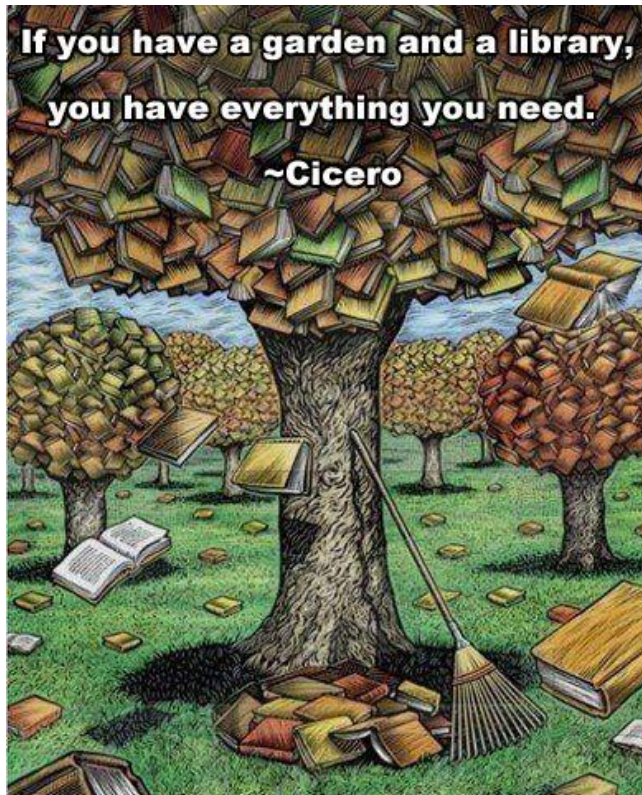


Can Eat!

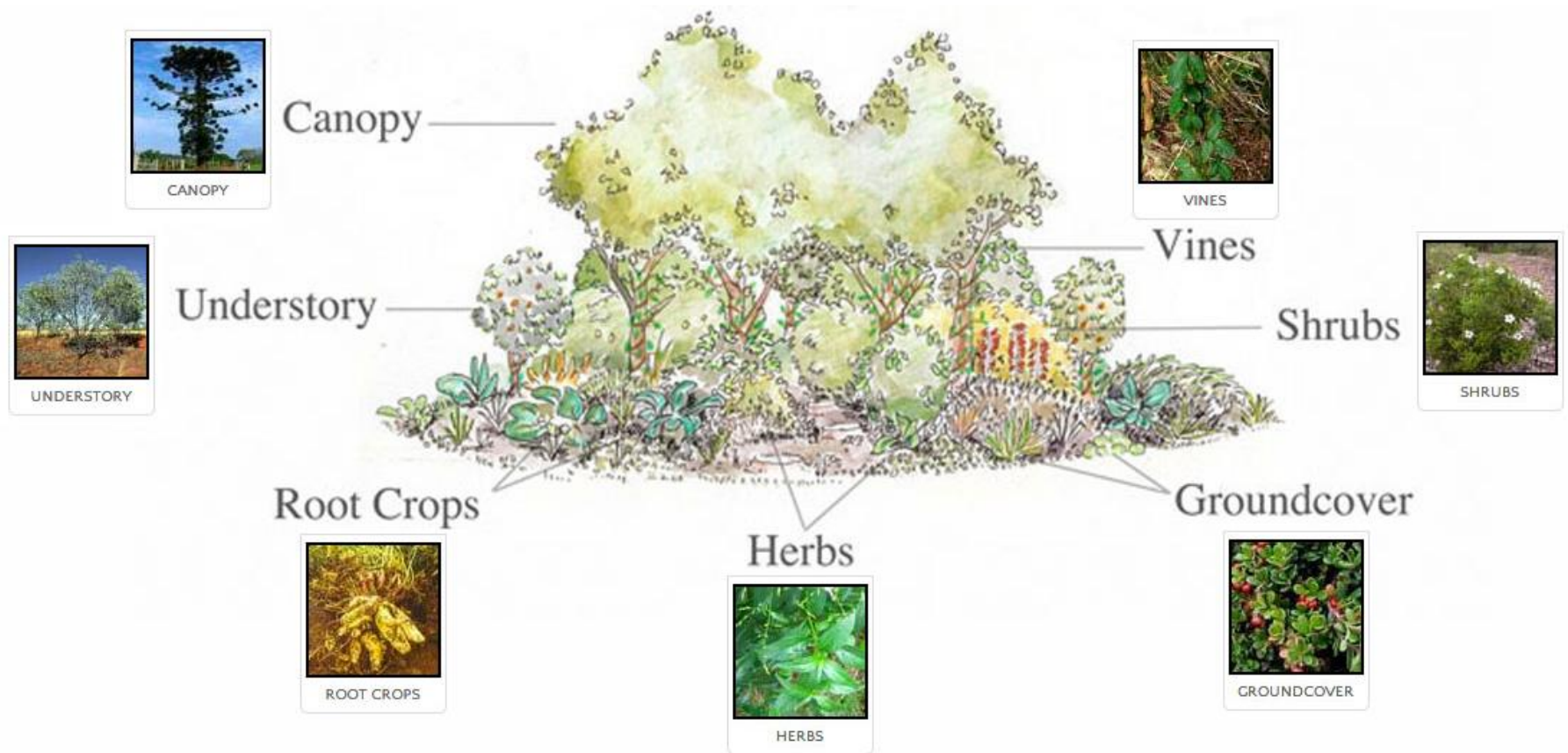




Xeriscape Garden



Food Forest



Source: www.onecommunityglobal.org/food-forest



Food Forest Site (Before)

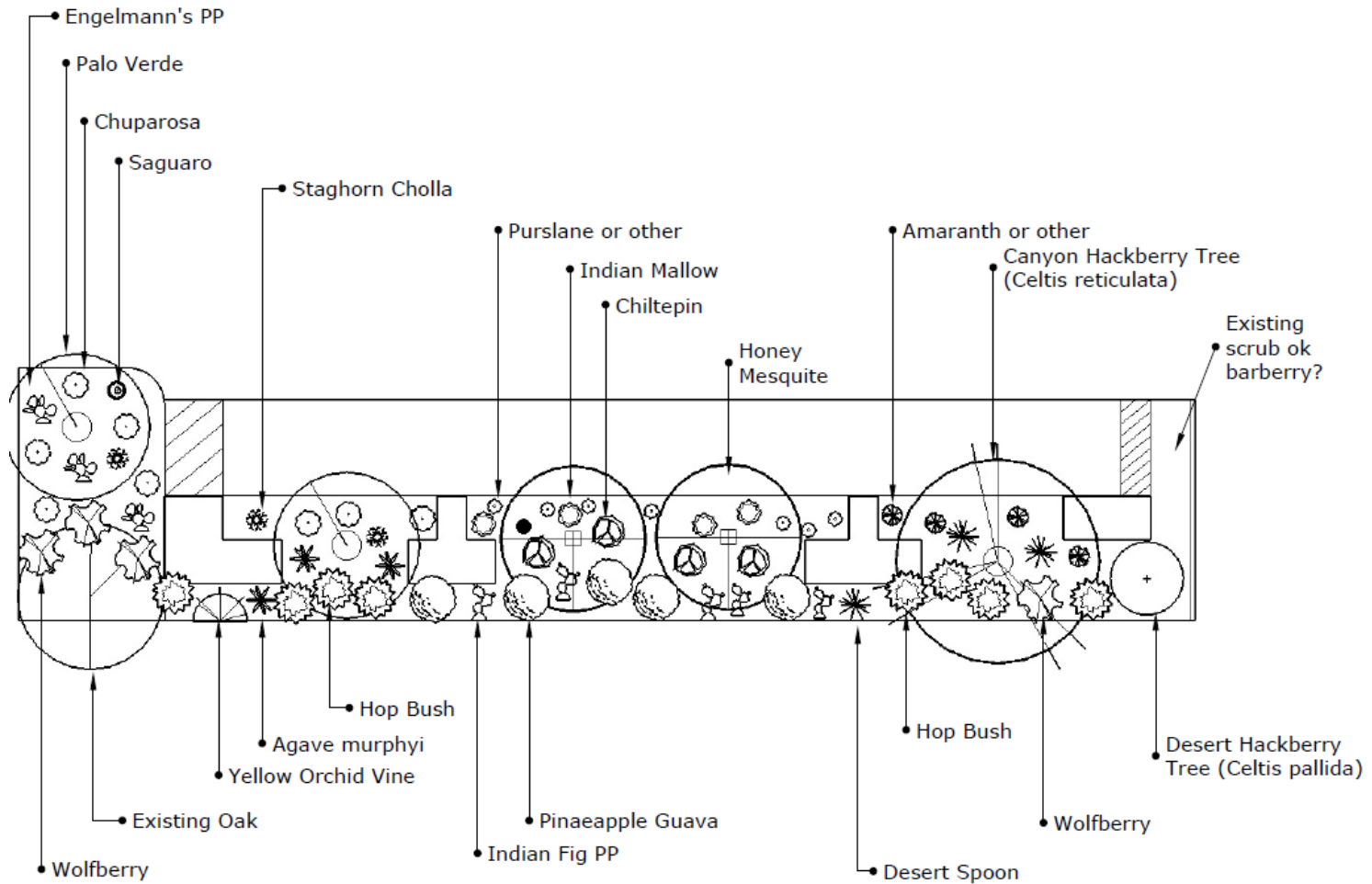
Site:

- Approx. 3,000 sq. ft.
- Plant criteria: low-water-use and medicinal/edible





Desert Food Forest Design





Adult Education

Fall 2017

Working together for a greener future.

Glendale Arizona

Green Living' Series

Glendale Main Library | 5959 W. Brown St.
Free classes to help residents create a more water & energy efficient home.

Wed. | Sept. 6 | 6 to 7:30 p.m.
From Garden to Table: Desert Herb Gardening
Do you want to start growing fresh herbs in your garden? A variety of hardy herbs, including rosemary, oregano, and thyme, grow well in the low desert and can easily be included in your garden. This class will cover plant selection, soil preparation, and proper watering. Bon appétit!

Sat. | Oct. 7 | 10 a.m. to Noon
The 123's of Landscape Watering
Protect your landscape investment by knowing how to properly water your plants. Learn about the basic components of an irrigation system and how to use an irrigation timer. Receive the "Landscape Watering by the Numbers" guide that takes you through how much, how long, and how often to water your plants.

Sat. | Oct. 21 | 10 a.m. to Noon
Create Your Own Desert Food Forest
Attention all foodies! Grow your yard and eat it, too! The Linking Edible Arizona Forests (LEAF) Network will be teaching this class on how to create a desert food forest in your yard. Mesquite, prickly pear, and agave are just a handful of tasty plants that thrive in the low desert. Gain a new appreciation of the Sonoran Desert by learning about different kinds of edible trees and shrubs, including how to plant, harvest, and tend to them. Attendees will receive a free desert edible plant at the end of the class (one plant per household; first-come, first-served). Funded by the Arizona Department of Forestry and Fire Management, and the USDA Forest Service. This institution is an equal opportunity provider.

Wed. | Nov. 8 | 6 to 7:30 p.m.
Backyard Composting
Are you interested in turning your kitchen scraps and yard waste into compost? Copy Mother Nature's original system of recycling organic materials into rich soil nutrients. Listen to Pam Perry, a local garden expert, talk about the tricks and tasks of home composting. Compost makes for a happy garden, which makes for a happy gardener! Win a composter, donated by the Glendale Recycling Division, by participating in a free raffle.

REGISTER AT:
623-930-3760 or
greenliving@glendaleaz.com



What was the most valuable part of today's class?

Discovering plants and trees that are edible and the best to plant in my micro-environment.

What will you do differently as a result of this class?

Plant new trees smarter.



Youth Education

Hotel Saguaro

Join us for a free puppet show and learn about the importance of the saguaro cactus in the Sonoran Desert.

Pre-show activity:

Taste Your Yard

Learn about edible plants that grow in your backyard

Foothills Library

Monday, June 26

Taste Your Yard: 2:30 – 3 p.m.
Hotel Saguaro: 3 – 4 p.m.

Velma Teague Library

Wednesday, July 5

Taste Your Yard: 1:30 – 2 p.m.
Hotel Saguaro: 2 – 3 p.m.

Main Library

Thursday, July 13

Taste Your Yard: 1:30 – 2 p.m.
Hotel Saguaro: 2 – 3 p.m.

First-come, first-served.
Recommended for K-3rd grade, families and tourists.
Not for preschool groups.



Glendale Water Services
Reliability • Quality • Value
Since 1915



Sponsored by the Glendale Water Services Department and funded through the Arizona Department of Forestry and Fire Management, and the USDA Forest Service. This institution is an equal opportunity provider.



Taste Your Yard



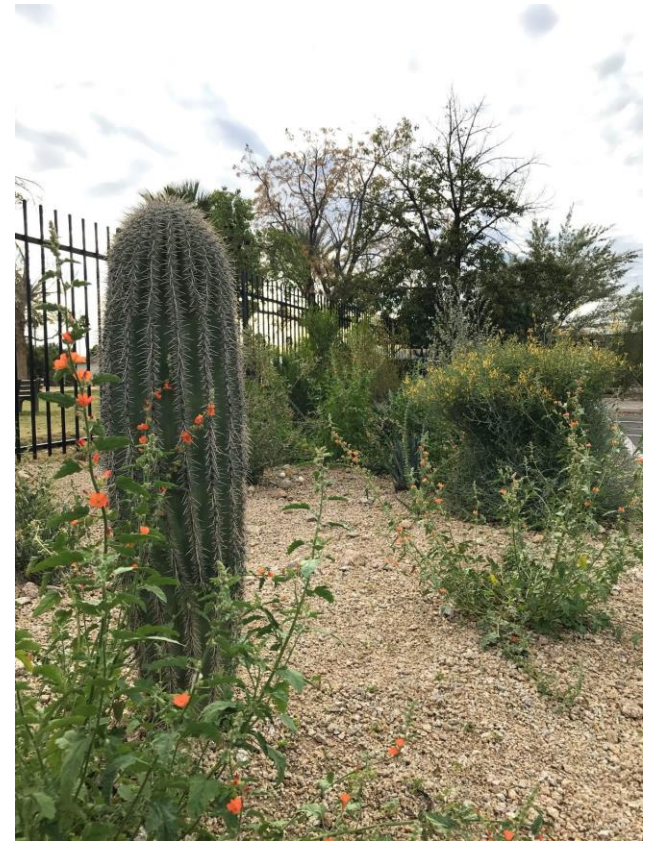


Desert Food Forest – Spring 2018





Desert Food Forest – Spring 2020



Eat Your Yard!

The Desert Can Feed You

Growing an edible food forest offers multiple benefits...

- Produces food for people and wildlife
- Provides clean air, shelter and shade
- Conserves water and energy

Research all plants before harvesting to identify which varieties are edible and safe to eat.

Avoid using herbicides and pesticides to protect people, wildlife and the environment.

Choose native plants with differing fruiting seasons to enjoy food year-round.

Choose a variety of trees, shrubs, vines and ground cover plants. Plants of varying heights mimic a natural forest.

Group plants in clusters to maximize food production in small urban spaces.



For more information, visit www.glendaleaz.com/WaterConservation



Funded through the Arizona Department of Forestry and Fire Management and the USDA Forest Service
This institution is an equal opportunity provider



Lessons Learned...

- Desert edible plants are hard to find
- Observations after installation

Upper Canopy

Foothills Palo Verde

Parkinsonia microphyllum



Groundcover

Purslane

Portulaca oleracea



Herbaceous

Amaranth

Amaranthus cruentus



“Wildlife”

Peafowl

Pavo cristatus





Getting the Word Out



ASU Home ▾ My ASU

Global Sustainability | Sustainable Cities Network

Home About ▾ Members ▾ Resources ▾ Research News & Events ▾ Contact

Home / Sustainable Cities Network (SCN) Partner News – City of Glendale Desert Food Forest

Sustainable Cities Network (SCN) Partner News – City of Glendale Desert Food Forest

Posted on [September 6, 2017](#) by [erugland](#)

Earlier this summer, the City of Glendale Water Services Department sponsored three "Hotel Saguaro" puppet shows during the Glendale Library's busy summer reading program. A unique pre-show activity called "Taste Your Yard" allowed participants to learn about desert edible and medicinal plants. The City partnered with [Maricopa County Master Gardeners](#), Library teen volunteers, and [Trees Matter](#) to staff interactive stations where participants made mesquite flour and sampled desert edibles, such as prickly pear candy, agave syrup, and pomegranate juice. This popular session demonstrated the need for more opportunities to learn about desert food—thankfully, development of the Desert Food Forest was underway.



Trees Matter added 3 new photos — at [Glendale Public Library](#).

July 13 · Glendale ·

We had so much fun discussing how families can taste their yard including trees! Thanks to [Glendale Water Conservation & Xeriscape Garden](#) for inviting us. We also loved watching "Hotel Saguaro" by [Great Arizona Puppet Theater](#)!





Sparking the Community's Interest



News Family Sports

Search for businesses, news, events and people

Home » Stories » 2018 » October

Glendale Water Services Department taps into climate for low-water food production project

BUSINESS
Glendale Sun | Oct 17, 2018



Locals learn about Desert Food Forest. | Courtesy of Glendale Water Services Department

The Glendale Desert Food Forest was awarded the coveted Crescordia Award at the Arizona Forward's 38th Annual Environmental Excellence Awards Ceremony!



Next Steps...



- Installed additional plants with Friends of the Garden volunteers
- More adult & youth education opportunities to come



Thank You Partners!





Resources

- desertharvesters.org
- leafnetworkaz.org
- issuu.com/edibleba
- glendaleaz.com/xeriscapegarden

Questions?

Thank you!

Anne Stahley
astahley@glendaleaz.com
623.930.3550

