

2019 EVALUATION OF THE PINAL COUNTY HEAT RELIEF NETWORK

Dametreea Carr McCuin, MPH

Epidemiologist | Pinal County Public Health Services District

Data slides adapted from graduate presentation by Mariko Yoshinaga, MPH



**PINAL COUNTY
PUBLIC HEALTH**



**ARIZONA DEPARTMENT
OF HEALTH SERVICES**

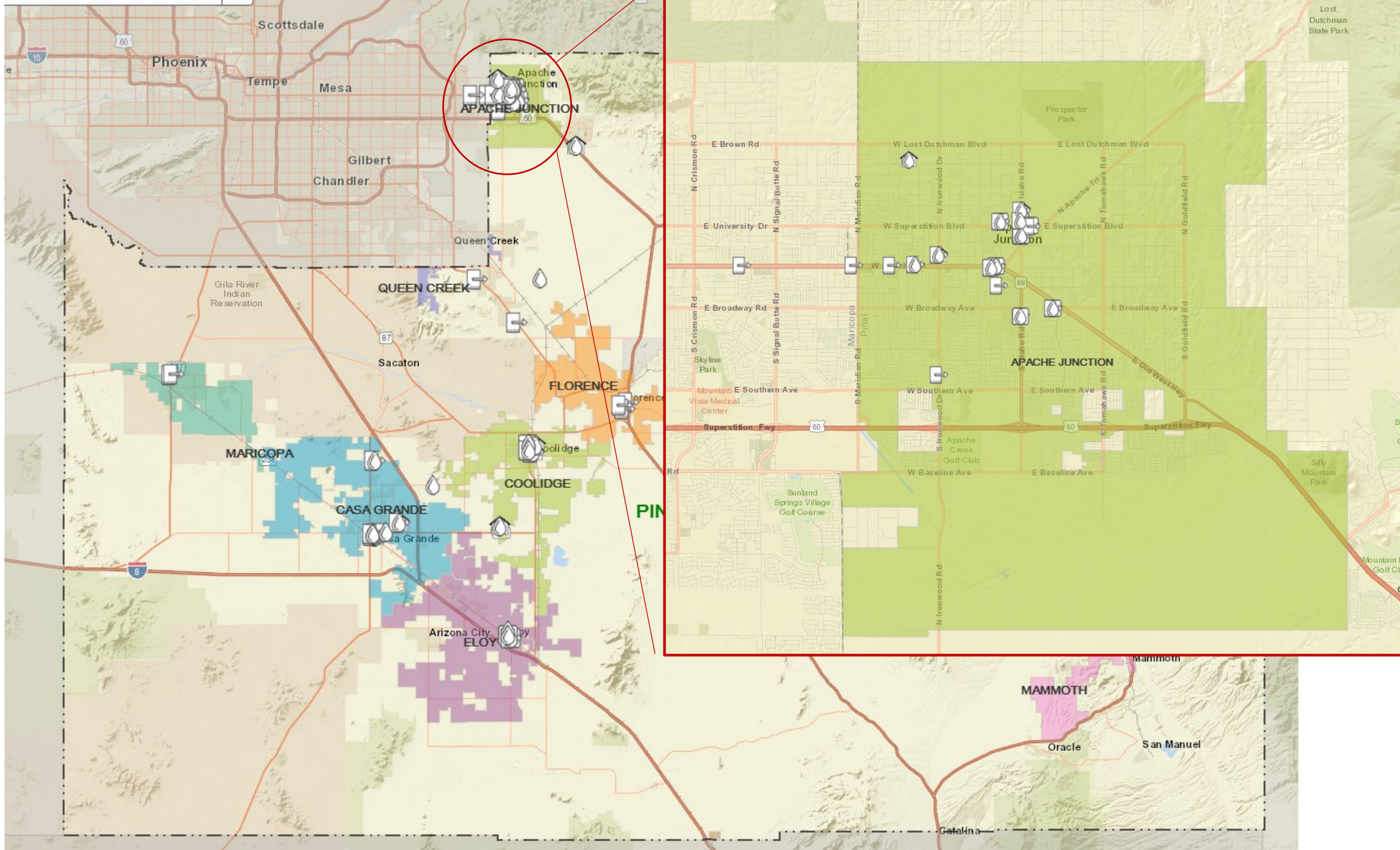


Who are our partners?



Apache Junction	Casa Grande	Coolidge	Eloy	Florence	Gold Canyon	Maricopa	San Tan Valley
16	11	6	3	2	1	2	3

Find address or place



Why was the Pinal County HRN developed?



How is the Pinal County HRN funded?



DONATIONS



How was the HRN evaluation structured?

KEY QUESTIONS

Are our HRSs effective at reducing HRI & providing heat protection resources?
How can effectiveness be improved, our reach be expanded?

THREE SURVEYS

Clients, Providers, General public

SURVEY FORMAT

Online (Qualtrics) | Paper (at heat relief station) | Take-home link
Submit online, fax, or email
“Survey Station” tips

What did clients identify as the biggest obstacle to utilizing HRN resources?

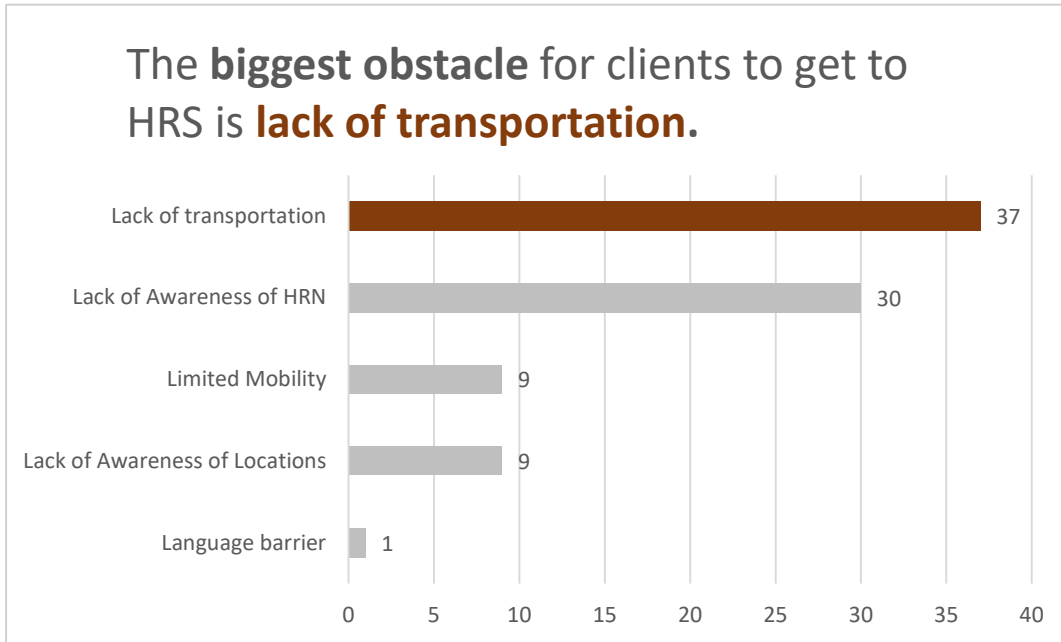


Figure 1. Obstacles facing HRN utilization among current HRN clients, Pinal County, AZ, 2019.

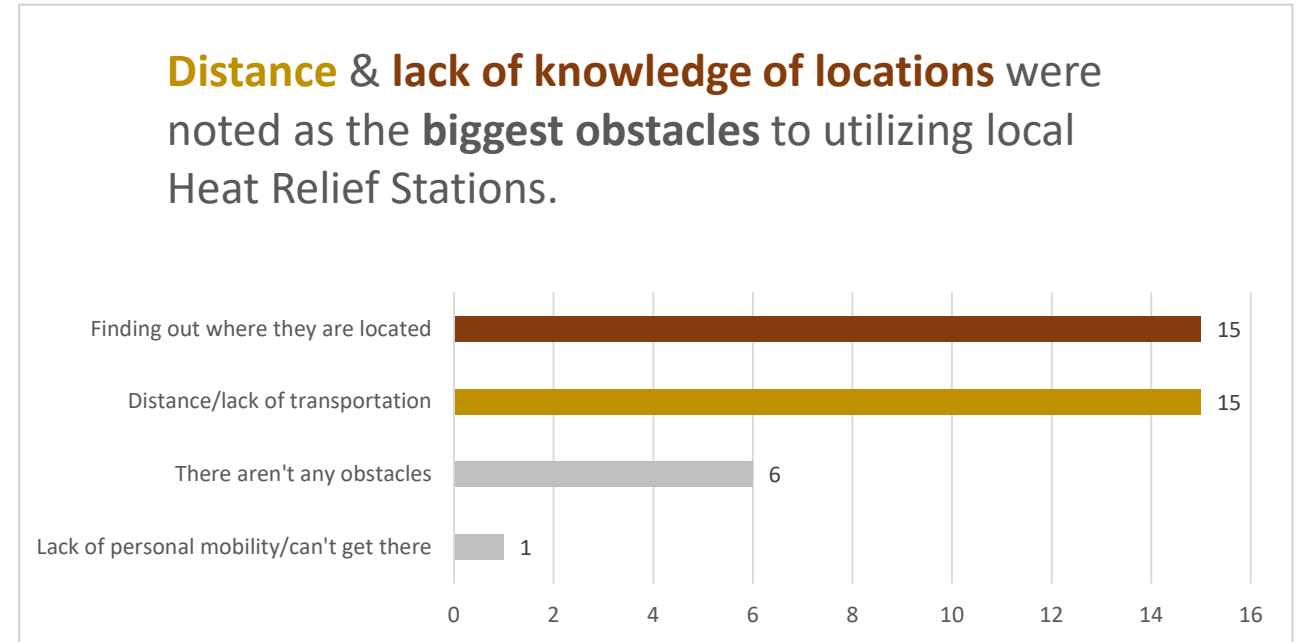


Figure 2. Obstacles facing HRN utilization among Pinal County residents, Pinal County, AZ, 2019.

How does location & travel distance impact the use of HRN resources?

The **majority** of respondents are **willing to travel 5 miles or less** for heat relief.

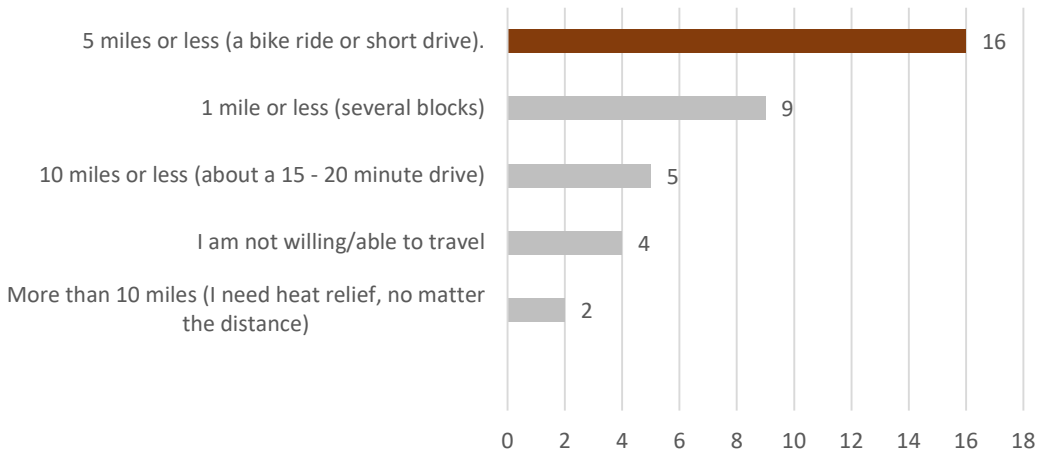


Figure 3. Distance Pinal County residents are willing to travel for heat relief, Pinal County, AZ, 2019

The **majority** of Heat Relief Network clients **traveled between 1 & 5+ miles** to access heat relief.

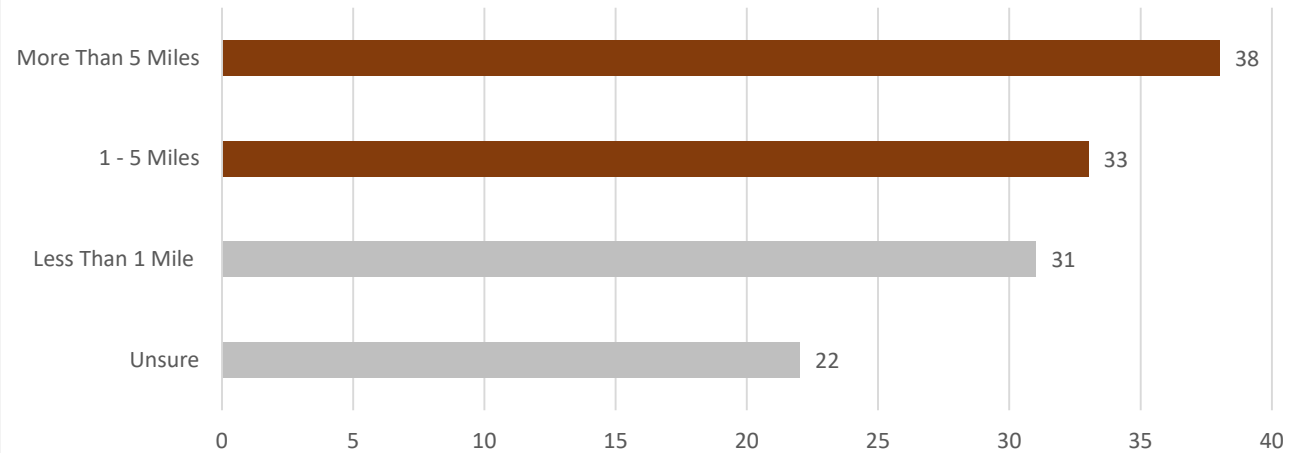


Figure 4. Distance current HRN clients travel to access heat relief, Pinal County, AZ, 2019.

Do pets at home prevent risk-groups from seeking heat relief services through the HRN?

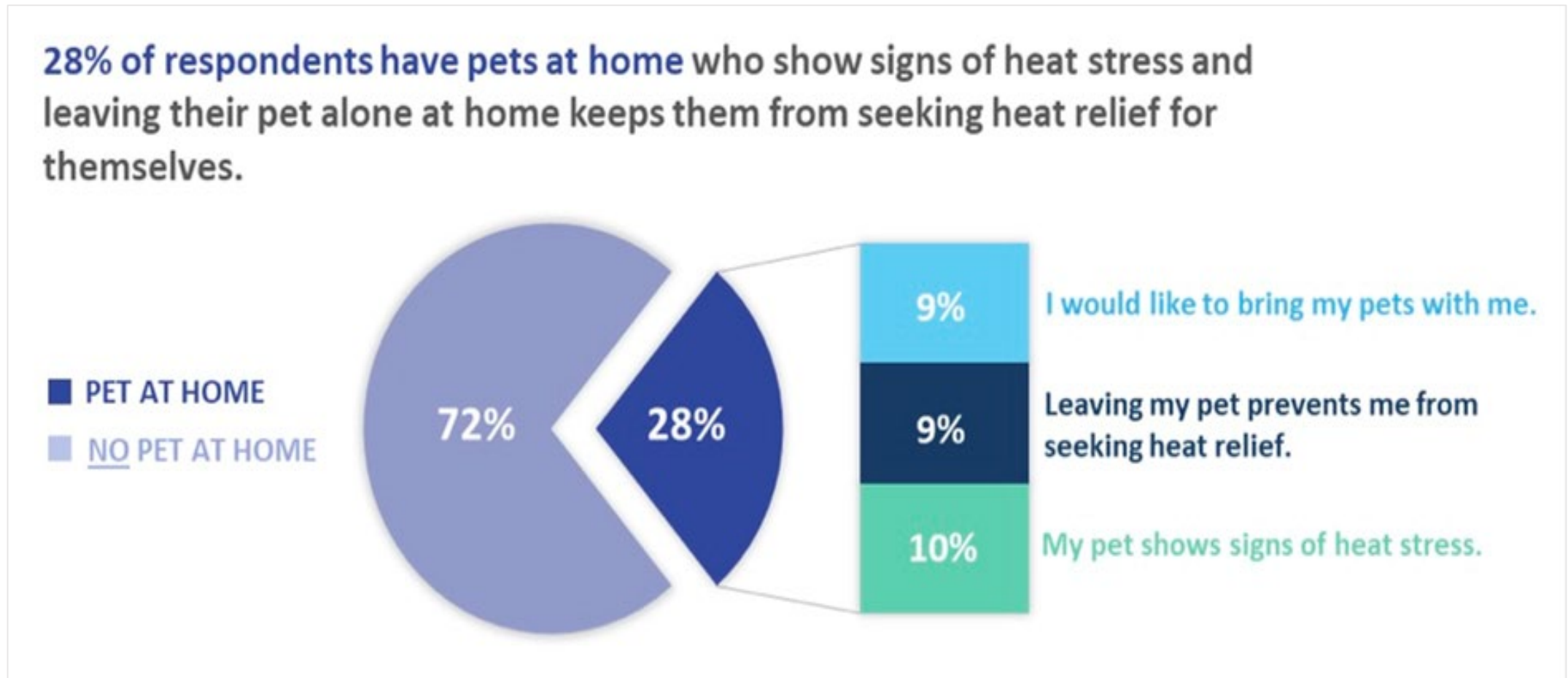


Figure 5. Distribution of HRN clients with pets also in need of heat relief, Pinal County, AZ, 2019.

What recommendations were developed?

Universal
signage or
identifier



Heat shelter &
free water here!



Increased
promotion &
awareness of
the HRN

Post HRN maps
& signs in public
locations (eg
buses & stops),
bilingual



Establish
partnerships with
ride sharing
services for (free)
transportation



Consider establishing a
motivation system for HRN
partners to improve HRN-
related services & participation

Want to talk more about this?



Dametreea Carr McCuin, MPH

Epidemiologist

520-866-4463

Dametreea.McCuin@pinal.gov



Braden Biggs

CEO

573-586-8787

bbiggs@bjbconsulting.com

Thank you!