

Advancing LEED for Cities in Arizona



Hilari Varnadore, Vice President for Cities, USGBC
hvarnadore@usgbc.org | 202.609.7163 mobile

My AZ ties

- MA in Geography from Northern Arizona University, 2000
 - Thesis: Place and Community Identity: Resilience and Planning in the Arizona-New Mexico Mountain Region
- Worked at the Grand Canyon Trust through graduate school
- Spouse: Went to Santa Rita HS in Tucson in the 1990s
- Family is mostly in Oro Valley / north Tucson

Hilari Varnadore

Vice President for Cities, USGBC

hvarnadore@usgbc.org | 202.609.7163 mobile

@HilariVarnadore on social



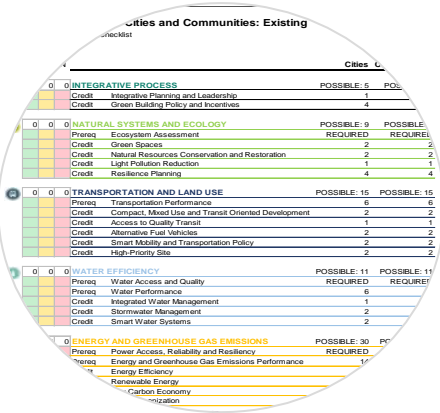
LEED for Cities

From Concept to Scale



Pilot program commences; USGBC and STAR Communities partner in a strategic integration

2016-18



What will define the next decade?

2020-30

2007-2016

USGBC launches “Green City Index” concept at Greenbuild Chicago 2007 which evolves into the STAR Community Rating System



2019

LEED v4.1 for Cities and Communities: Existing and Plan + Design rating systems released



USGBC launches program for cities and communities

LEED

LEED v4.1 launches for cities and communities



Selina Holmes

Apr 02, 2019

2 minute read



USGBC launches registration for LEED v4.1 for new, developing and existing cities and communities.

Today, our cities are at a crossroads. While the challenges our global cities face have never been more serious, the performance improvement opportunities available to those who invest in the right technologies have never been more promising. All over the world, city leaders are realizing the incredible opportunities that green buildings and green infrastructure present— and consequently, a new generation of high-performance cities is emerging.

Get started with LEED v4.1

Select each rating system below to learn more.



Building Design + Construction



Interior Design + Construction



Operations + Maintenance



Residential



Cities and Communities



Recertification

<https://www.usgbc.org/leed/v41#cities-and-communities>

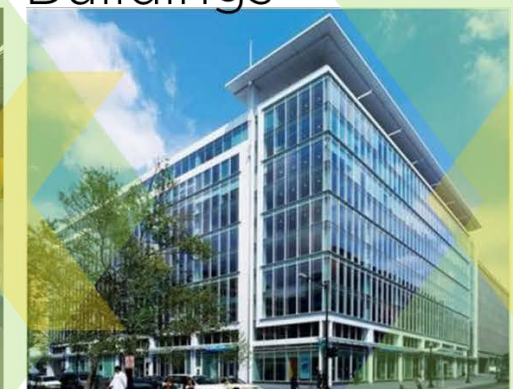


Connecting buildings, communities and cities toward a regenerative, equitable future

Interiors



Buildings



Communities



Cities

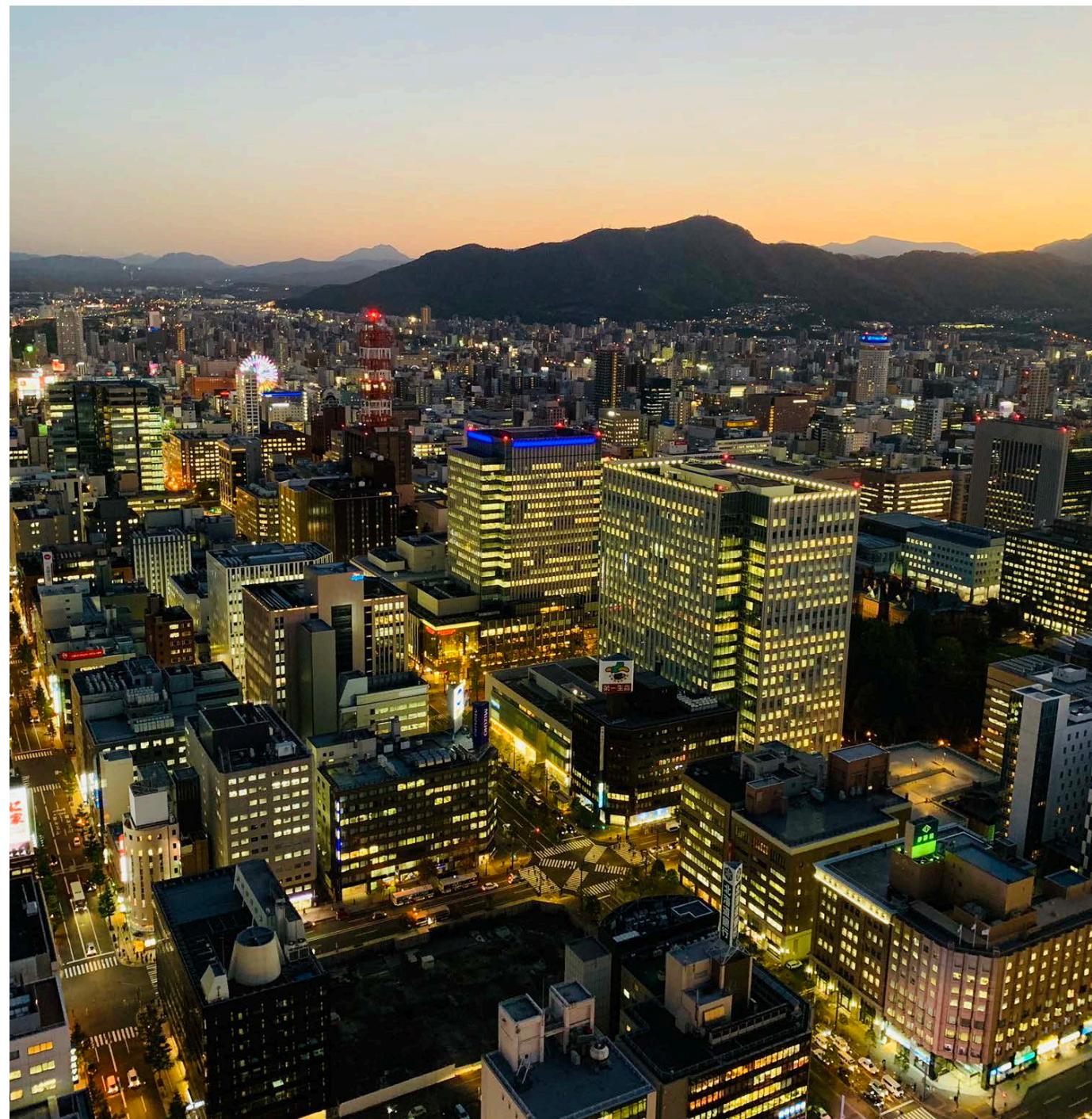


Regions



Measuring Carbon Neutrality from Spaces to Places

LEED for Cities = Local Governments or Cities, Towns and Counties



Large cities and counties

Surat, Sapporo, Chicago, San Diego County, Houston, Miami-Dade County



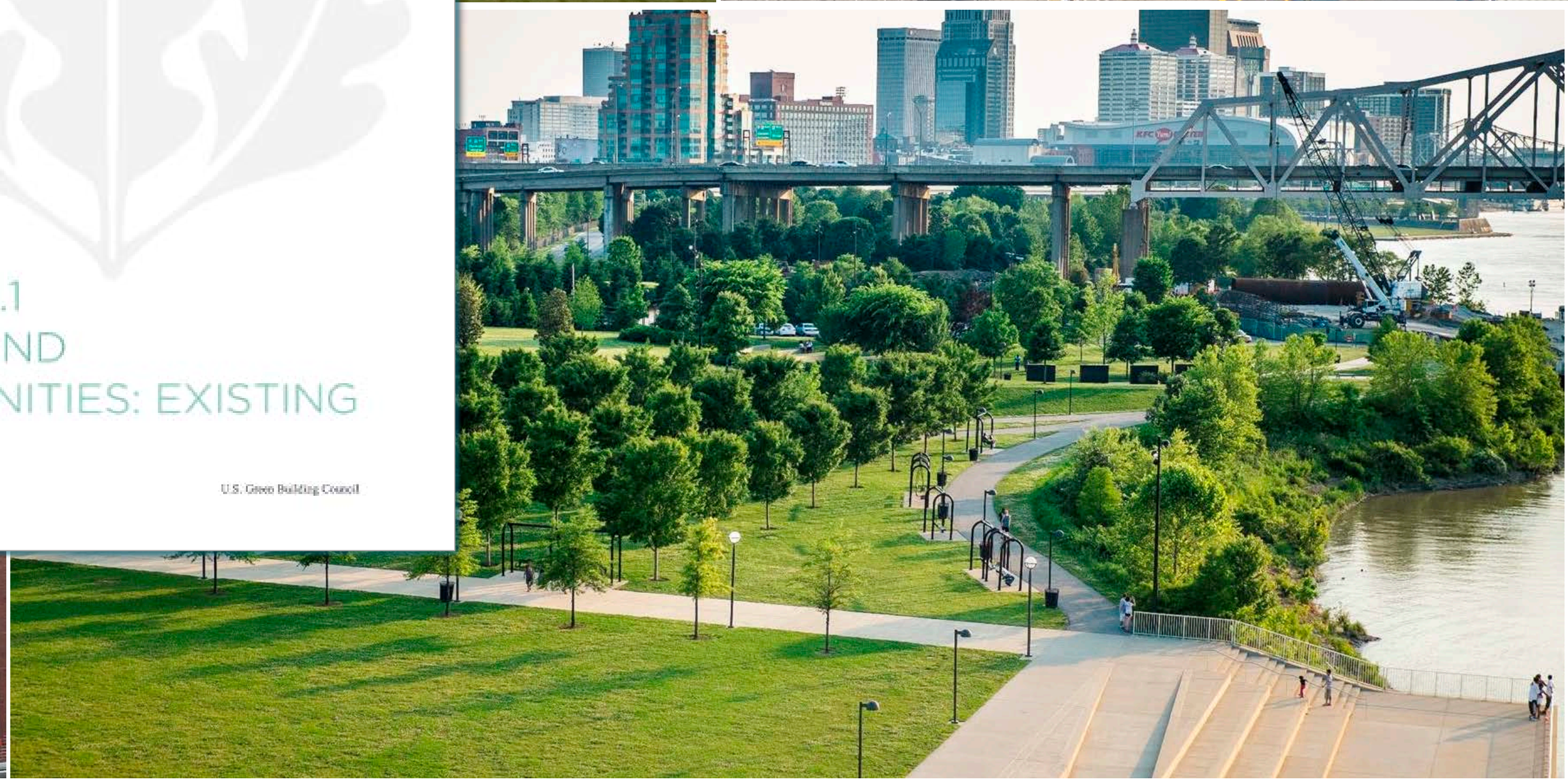
Mid-sized places

The average population of our registered local governments is ~445,000, a city the size of Atlanta, Tampa or Cleveland.



Smaller local governments

Jupiter Inlet Colony is a town of less than 500. Other small cities include Middleton and Durango.



LEED v4.1 CITIES AND COMMUNITIES: EXISTING

April 2, 2019

U.S. Green Building Council

LEED for Cities is aligned with global goals.

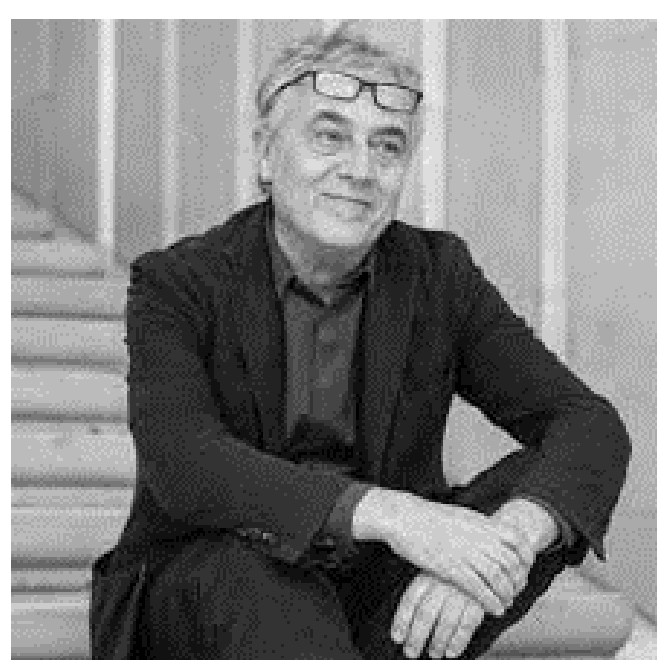
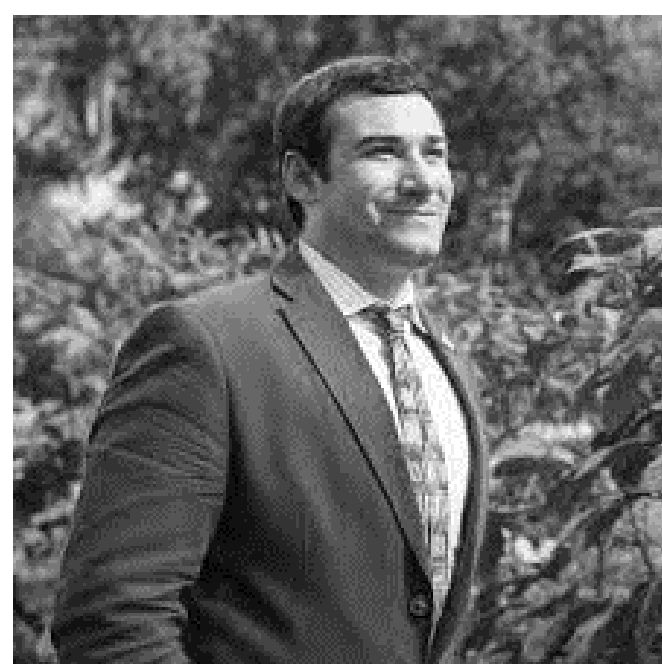


Download our LEED for Cities and UN SDG alignment report here:

<https://www.usgbc.org/articles/explore-how-leed-cities-and-communities-aligns-un-sustainable-development-goals>

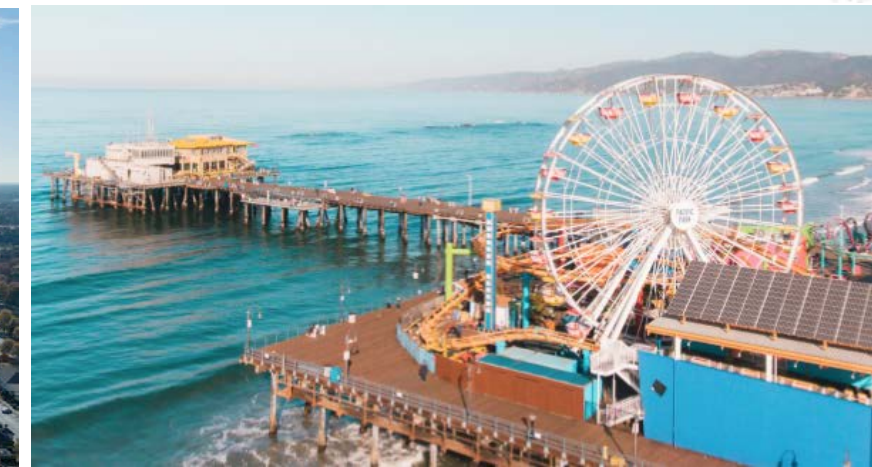
Cities and Communities Working Group and Subcommittees

Global Network of Stakeholders



115 Certified and 175+ Registered Local Governments

Global Network of Cities and Communities



Tracking Policy & City Ambition Around the World

Paris' reforestation initiative | LA County's approach to fossil fuel free | Berlin's car-free city | Miami Dade's Chief Heat Officer | Prague's Circularity plan | Glasgow's Active Transportation Network | Oslo's Clean Construction initiative



LEED v4.1 Certifications	Date	Level	Score
Cincinnati, OH	11/18/19	Silver	51
Orlando, FL	11/18/19	Gold	61
Royal Oak, MI	4/15/20	Certified	42
Santa Fe, NM	5/14/20	Gold	62
Greensboro, NC	7/29/20	Silver	55
Las Vegas, NV	8/17/20	Gold	66
Albuquerque, NM	9/19/20	Silver	51
Costa Mesa, CA	11/20/20	Gold	60
Palm Beach County, FL	12/14/20	Gold	60
Rancho Cucamonga, CA	12/14/20	Silver	57
Tampa, FL	2/1/21	Gold	64
Bloomington, IN	2/16/21	Certified	42
Orange County, NY	3/22/21	Silver	53
Shaker Heights, OH	5/6/21	Gold	60
Tallahassee, FL	5/17/21	Gold	68
Miami Beach, FL	7/7/2021	Gold	67
Charlotte, NC	9/24/2021	Gold	61
Cleveland, OH	9/29/2021	Silver	57
Miami Dade County, FL	10/13/2021	Gold	67
Louisville/Jefferson County, KY	12/6/21	Silver	53
Santa Monica, CA	12/10/21	Platinum	83
West Palm Beach, FL	2/3/2022	Gold	73
Northampton, MA	2/18/2022	Gold	67
Orange County, FL	3/21/2022	Gold	68

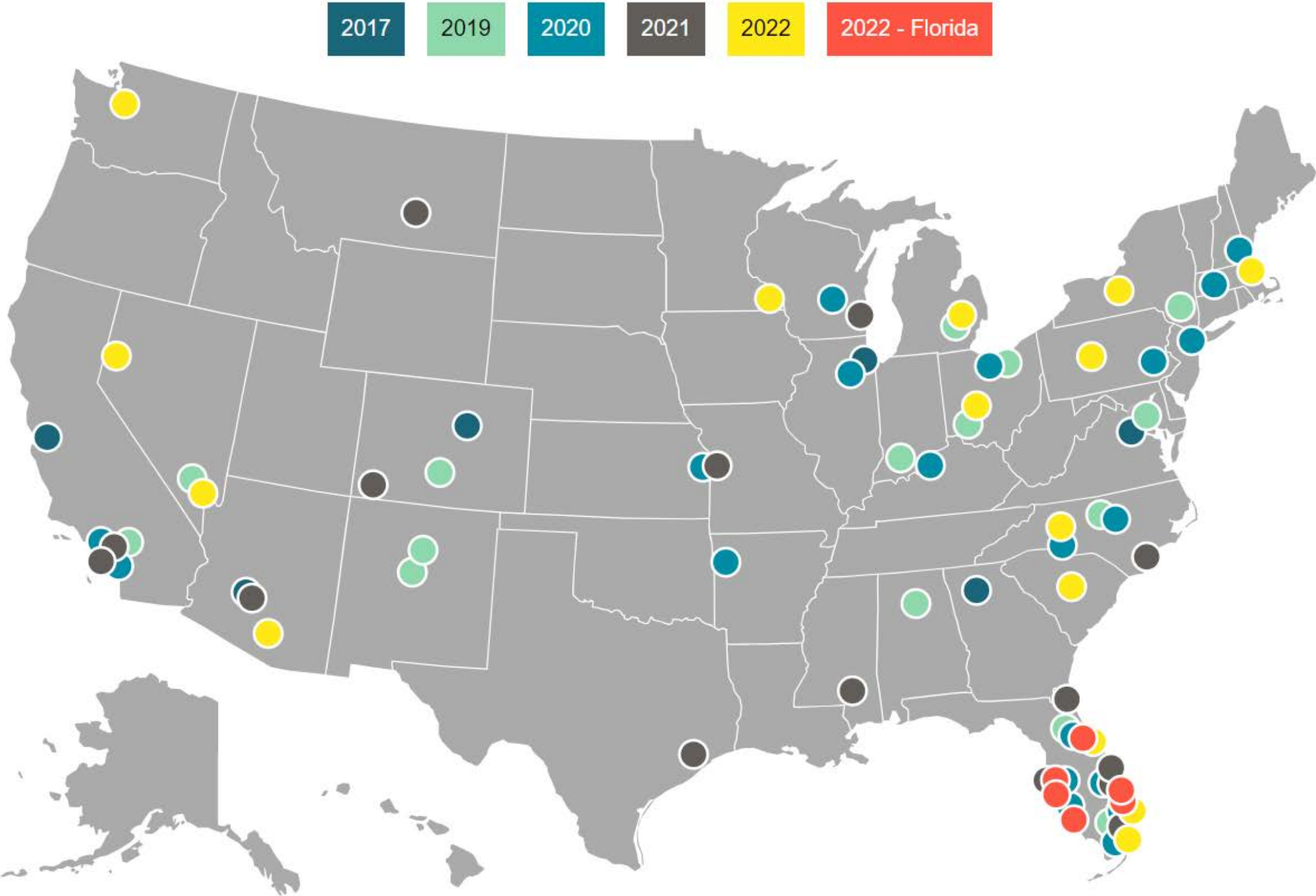
LEED v4.1 Certifications

24 total certifications

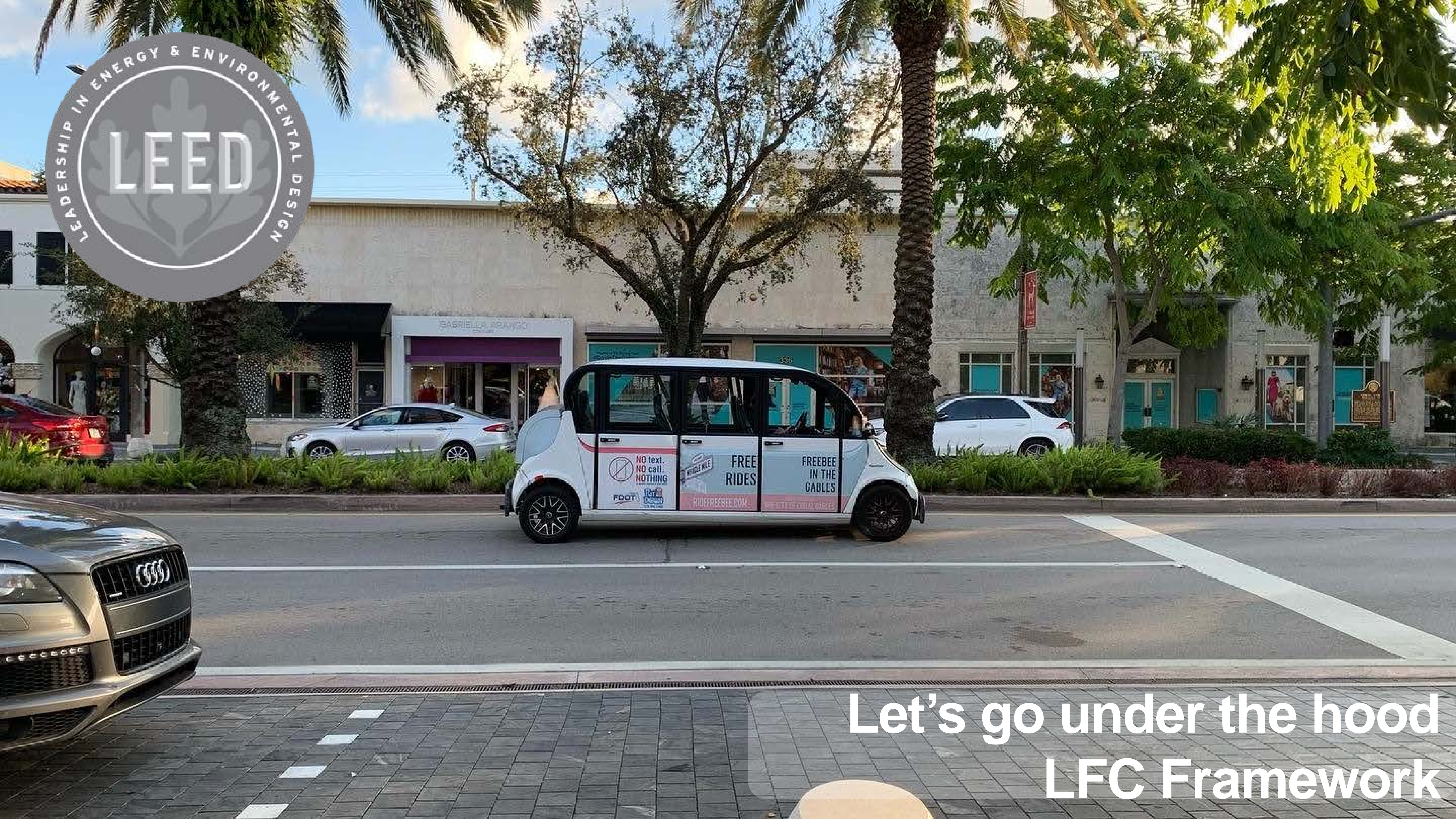




Arizona Cities and Counties that are Registered / Certified in LEED for Cities



City/County	Leadership Program	Certified
Chandler		2014
Coconino County		
Flagstaff		
Peoria		
Phoenix	2017	2017
Scottsdale		
Sedona		
Tempe	2021	
Tucson	2022	2014



Let's go under the hood
LFC Framework



Cities Communities



POSSIBLE: 5 POSSIBLE: 5

NATURAL SYSTEMS AND ECOLOGY		POSSIBLE: 9	POSSIBLE: 9
Prereq	Ecosystem Assessment	REQUIRED	REQUIRED
Credit	Green Spaces	2	2
Credit	Natural Resources Conservation and Restoration	2	2
Credit	Light Pollution Reduction	1	1
Credit	Resilience Planning	4	4



POSSIBLE: 9 POSSIBLE: 9

TRANSPORTATION AND LAND USE		POSSIBLE: 15	POSSIBLE: 15
Prereq	Transportation Performance	6	6
Credit	Compact, Mixed Use and Transit Oriented Development	2	2
Credit	Access to Quality Transit	1	1
Credit	Alternative Fuel Vehicles	2	2
Credit	Smart Mobility and Transportation Policy	2	2
Credit	High-Priority Site	2	2



POSSIBLE: 15 POSSIBLE: 15

WATER EFFICIENCY		POSSIBLE: 11	POSSIBLE: 11
Prereq	Water Access and Quality	REQUIRED	REQUIRED
Prereq	Water Performance	6	6
Credit	Integrated Water Management	1	1
Credit	Stormwater Management	2	2
Credit	Smart Water Systems	2	2



POSSIBLE: 11 POSSIBLE: 11

ENERGY AND GREENHOUSE GAS EMISSIONS		POSSIBLE: 30	POSSIBLE: 30
Prereq	Power Access, Reliability and Resiliency	REQUIRED	REQUIRED
Prereq	Energy and Greenhouse Gas Emissions Performance	14	18
Credit	Energy Efficiency	4	4
Credit	Renewable Energy	6	6
Credit	Low Carbon Economy	4	-
Credit	Grid Harmonization	2	2



POSSIBLE: 30 POSSIBLE: 30

MATERIALS AND RESOURCES

POSSIBLE: 10 POSSIBLE: 10

QUALITY OF LIFE

POSSIBLE: 20 POSSIBLE: 20

INNOVATION

POSSIBLE: 6 POSSIBLE: 6

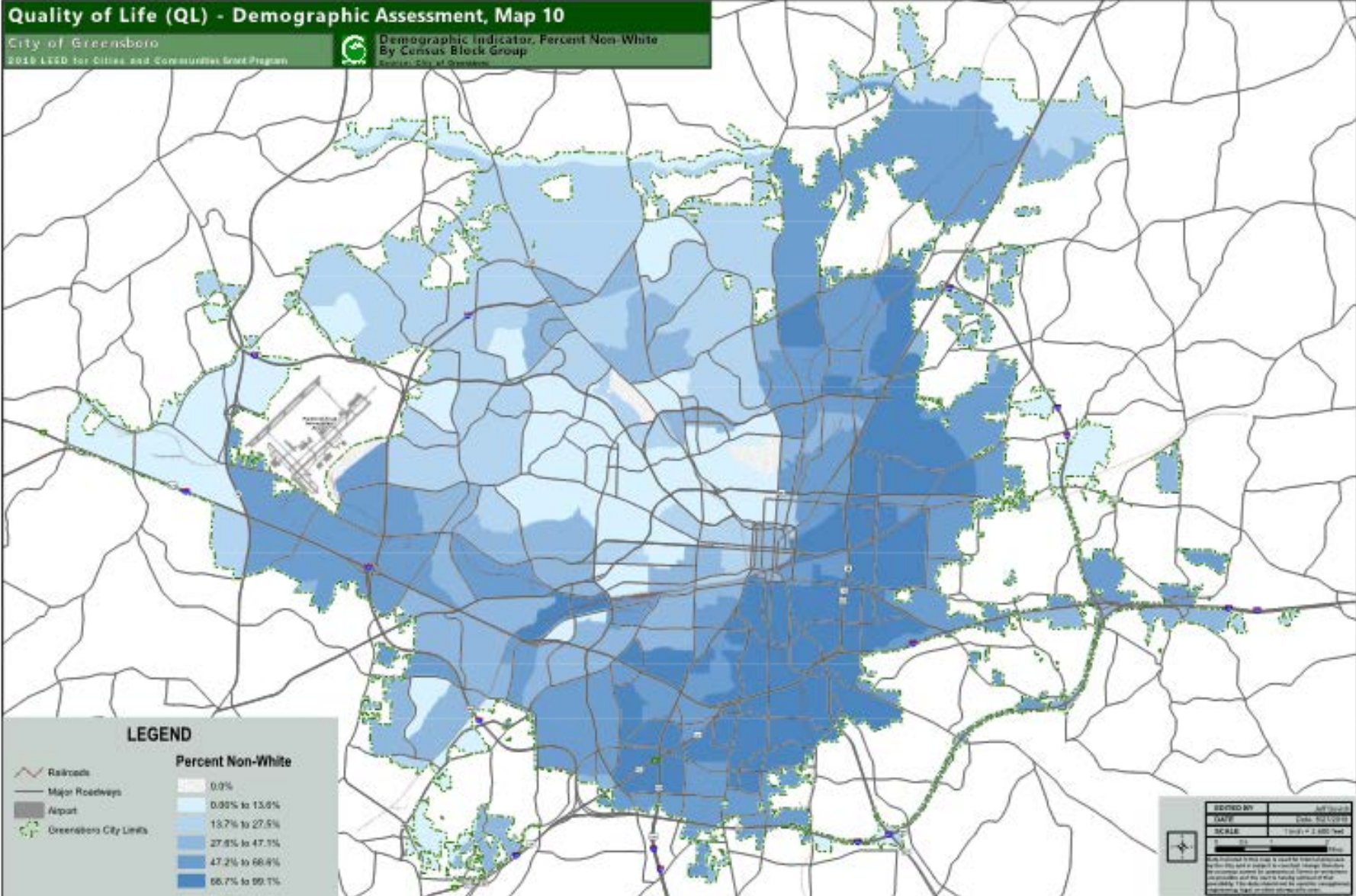
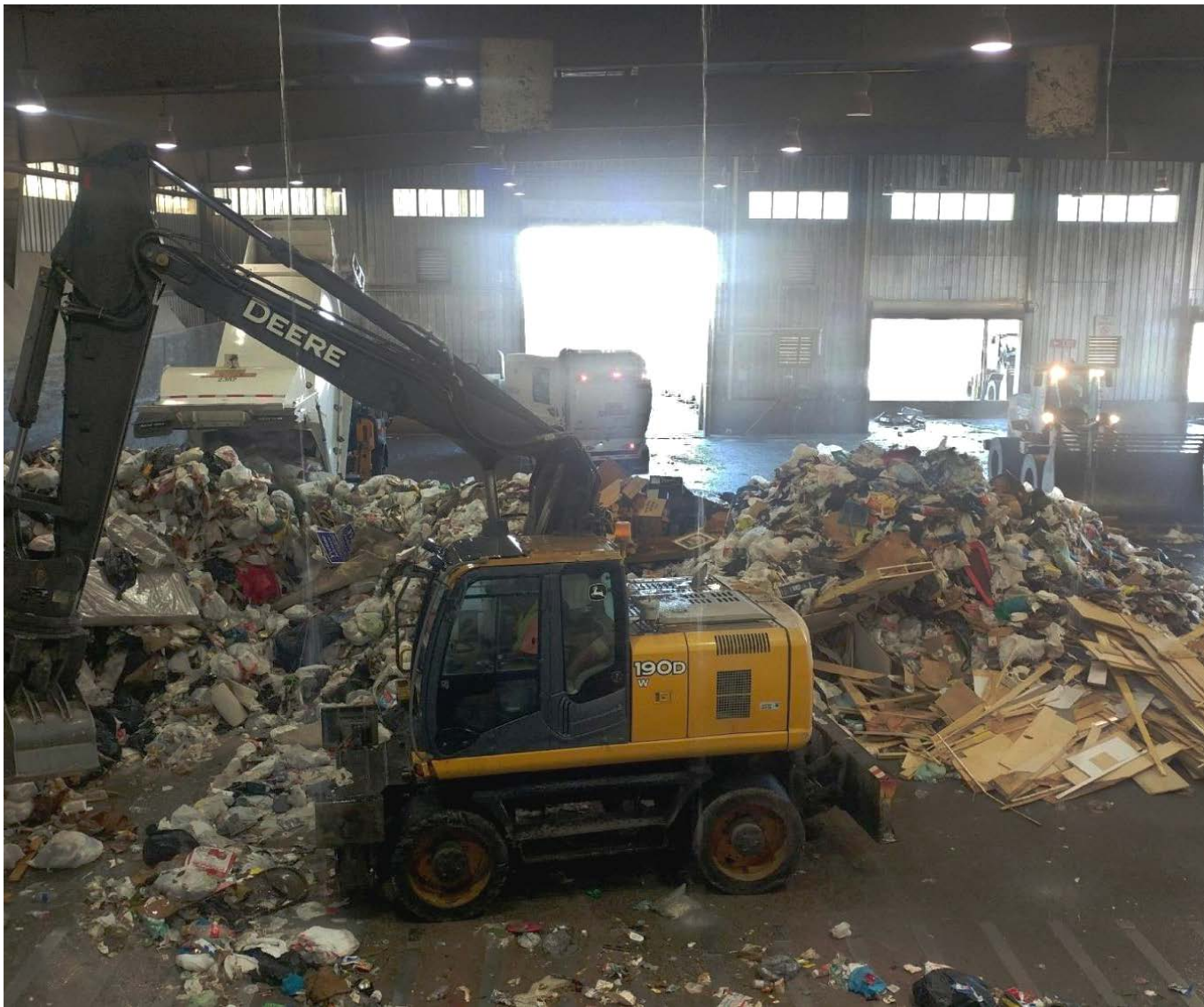
REGIONAL PRIORITY

POSSIBLE: 4 POSSIBLE: 4

TOTAL	110	110
--------------	------------	------------

40-49 Points	50-59 Points	60-79 Points	80+ Points
CERTIFIED	SILVER	GOLD	PLATINUM

Prerequisites: Evaluate local conditions.



Prerequisites: Benchmark performance with peers.

Category	Performance Reported to Arc
Transportation	Vehicle Miles Traveled (daily per capita)
Water	Domestic Water Consumption (daily per capita)
Energy & GHG	Greenhouse Gas Emissions (annually per capita)
Waste	Municipal solid waste generated (annually per capita) Municipal solid waste diverted (% of total generated)
Quality of Life Category	
• Education	• Population with (at least) a High School Degree • Population with (at least) a Bachelor’s Degree
• Equitability	• Median Gross Rent as % of Household Income • Gini Coefficient
• Prosperity	• Median Household Income • Unemployment Rate
• Health & Safety	• Median Air Quality Index (AQI) • Air Quality Days Unhealthy for Sensitive Groups • Violent Crime


Credit: Green Building Policies and Incentives

Encourages public and private sector green buildings, policies, incentives, and building performance disclosure



City of Chicago, IL | LEED for Cities Platinum 2018

Chicago Sustainable Development Policy 2017^{01.12}



Compliance Options	Points Required	Sustainable Strategies Menu																																		
		Health	Energy				Stormwater				Landscapes		Green Roofs		Water		Transportation				Solid Waste	Work Force	Wildlife													
			1.1 Achieve WELL Building Standard	2.1 Designed to earn the Energy Star	2.2 Exceed Energy Code (5%)	2.3 Exceed Energy Code (10%)	2.4 Exceed Energy Code (25%)	2.5 Exceed Energy Code (40%)	2.6 Onsite Renewable Energy (5%)	2.7 Onsite Renewable Energy (5%)	3.1 Exceed Stormwater Ordinance by 25%	3.2 Exceed Stormwater Ordinance by 50%	3.3 100% Stormwater Infiltration	3.4 Sump Pump Capture & Reuse	3.5 100-year detention for 100-ft buildings	3.6 100-year Detention for Bypass	4.1 Working Landscapes	4.2 Natural Landscapes	4.3 Tree Planting	4.4 Achieve Sustainable Sites Certification	5.1 Green Roof 50-100%	5.2 Green Roof 100%	6.1 Indoor Water Use Reduction (25%)	6.2 Indoor Water Use Reduction (40%)	7.1 Proximity to Transit Service	7.2 Bluebeam Sponsorship	7.3 Bike Parking Residential	7.4 Bike Parking Commercial & Industrial	7.5 EV Charging Stations	7.6 EV Charger Readiness	7.7 CTA Digital Displays	8.1 80% Waste Diversion	8.2 Workforce Development	9.1 Bird Protection (Basic)	9.2 Bird Protection (Enhanced)	
Starting Points	Number of Optional Points Required	1.1	2.1	2.2	2.3	2.4	2.5	2.6	2.7	3.1	3.2	3.3	3.4	3.5	3.6	4.1	4.2	4.3	4.4	5.1	5.2	6.1	6.2	7.1	7.2	7.3	7.4	7.5	7.6	7.7	8.1	8.2	9.1	9.2		
Options Without Certification	0	100 / 50 / 25	40	30	20	30	40	50	10	20	10	20	40	5	5	5	5	5	5	20	10	20	10	20	5	5	5	5	10	5	5	10	10	5	10	
Options With Certification	0	100 / 50 / 25	40	30	20	30	40	50	10	20	10	20	40	5	5	5	5	5	5	20	10	20	10	20	5	5	5	5	10	5	5	10	10	5	10	
LEED Platinum	95	5 / 0 / 0	40	NA	NA	NA	NA	NA	NA	10	20	40	5	5	5	5	NA	NA	NA	20	10	20	NA	NA	NA	5	NA	NA	NA	5	5	NA	10	5	10	
LEED Gold	90	10 / 0 / 0	40	NA	NA	NA	NA	NA	NA	10	20	40	5	5	5	5	NA	5	NA	5	20	10	20	NA	NA	NA	5	NA	NA	NA	5	5	10	10	5	10
LEED Silver	80	20 / 0 / 0	40	NA	NA	NA	NA	NA	NA	10	20	40	5	5	5	5	5	5	5	20	10	20	NA	NA	NA	5	NA	NA	NA	10	5	5	10	10	5	10
Green Globes 4-Globes	90	10 / 0 / 0	40	NA	NA	NA	NA	NA	NA	10	20	40	5	5	5	5	5	NA	5	20	10	20	NA	NA	NA	5	NA	NA	NA	10	5	5	10	10	5	10
Green Globes 3-Globes	80	20 / 0 / 0	40	NA	NA	NA	NA	NA	NA	10	20	40	5	5	5	5	5	NA	5	20	10	20	NA	NA	NA	5	NA	NA	NA	10	5	5	10	10	5	10
Green Globes 2-Globes	70	30 / 0 / 0	40	NA	NA	NA	NA	NA	NA	10	20	40	5	5	5	5	5	5	5	20	10	20	NA	NA	NA	5	NA	NA	NA	10	5	5	10	10	5	10
Living Building Challenge	100	0 / 0 / 0	40	NA	NA	NA	NA	NA	NA	10	20	40	5	5	5	5	NA	NA	NA	20	10	20	NA	NA	NA	NA	NA	NA	NA	10	5	5	NA	10	5	10
Living Building Challenge Petal	90	10 / 0 / 0	40	NA	20	30	40	50	NA	NA	10	20	40	5	5	5	5	5	5	20	10	20	10	20	NA	5	NA	NA	NA	10	5	5	10	10	5	10
Enterprise Green Communities*	80	20 / 0 / 0	40	NA	NA	NA	NA	NA	NA	10	20	10	20	40	5	5	5	5	5	20	10	20	10	20	5	NA	NA	NA	10	5	5	10	10	5	10	
PassiveHouse	70	30 / 0 / 0	40	NA	NA	NA	NA	NA	10	20	10	20	40	5	5	5	5	5	5	20	10	20	10	20	5	5	5	5	10	5	5	10	10	5	10	

Planned Development Projects (PD) - New Construction

TIF Funded Development Projects (TIF) - New Construction*

DPD Housing, Multi-family (>5 units) Projects (DPD-H MF) - New Construction

PD, TIF, DPD-H MF and Class L - Renovation Projects*

Moderate Renovation Projects

Substantial Renovation Projects

100 points required

100 points required

100 points required

25 points required

50 points required

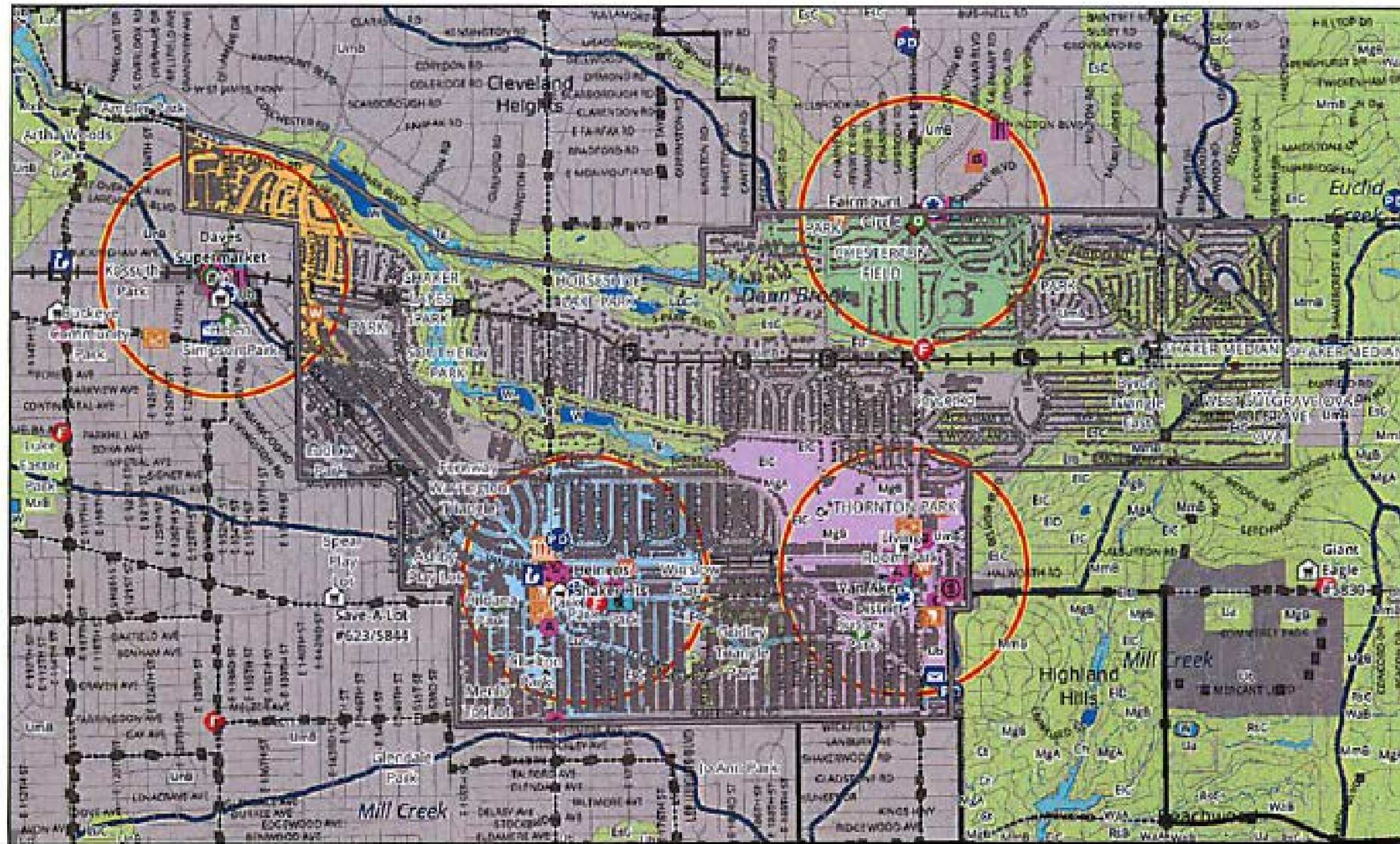
*only available to affordable housing projects funded by DPD's Housing Bureau

*does not apply to TIF assistance of less than \$1M (including but not limited to TIF-NIP, TIF Purchase Rehab,



Credit: Compact, Mixed Use and Transit Oriented Development

Compact and Complete Centers



There are three CCCs in Shaker Heights: Shaker Square, Lee Road, the Van Aken District. Fairmount Circle meets all of the CCC requirements aside from access to transit.

Encourages compact, mixed-use development, high levels of connectivity and walking, biking, and transit use





City of Bloomington, IN
LEED for Cities Certified 2021

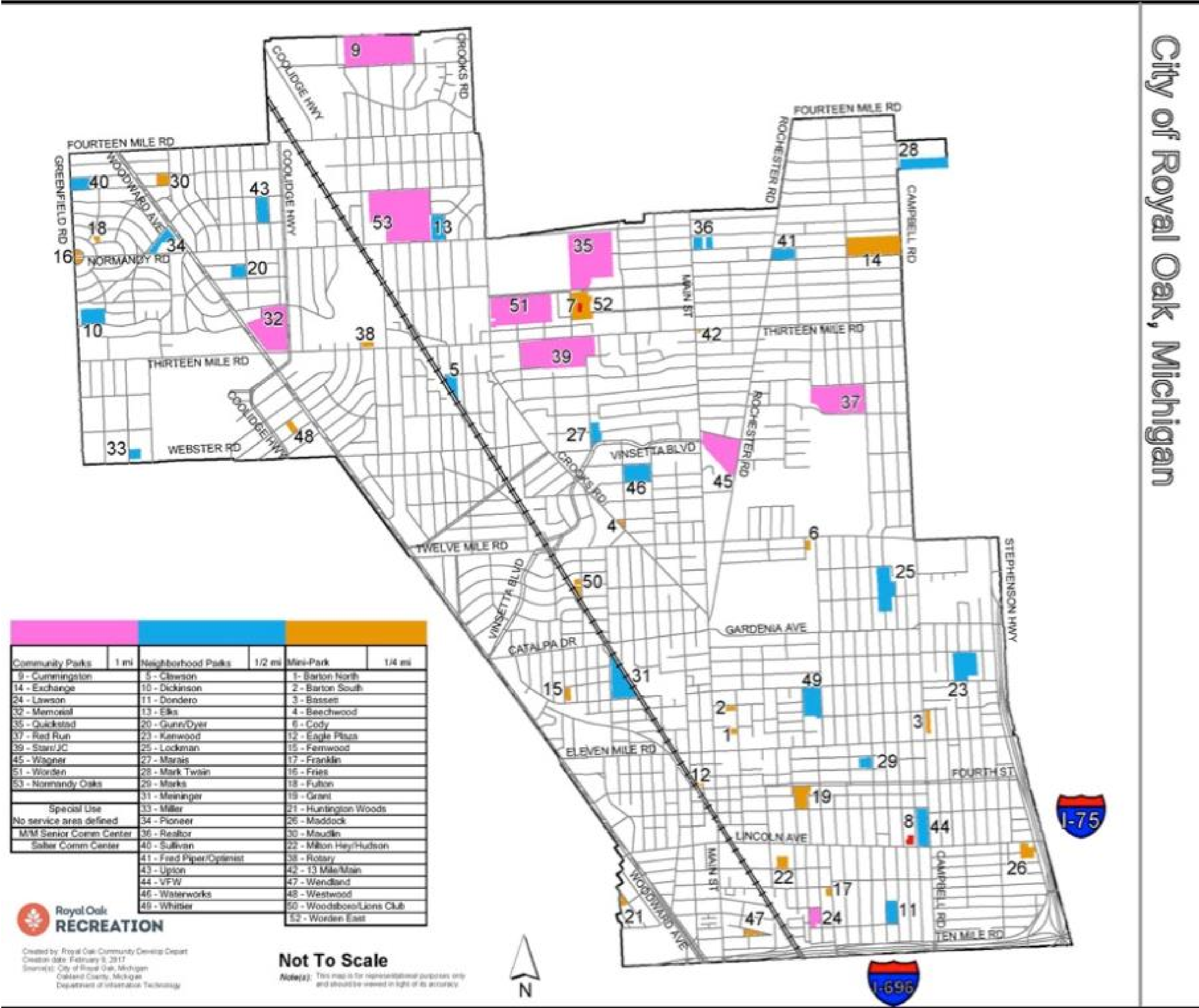
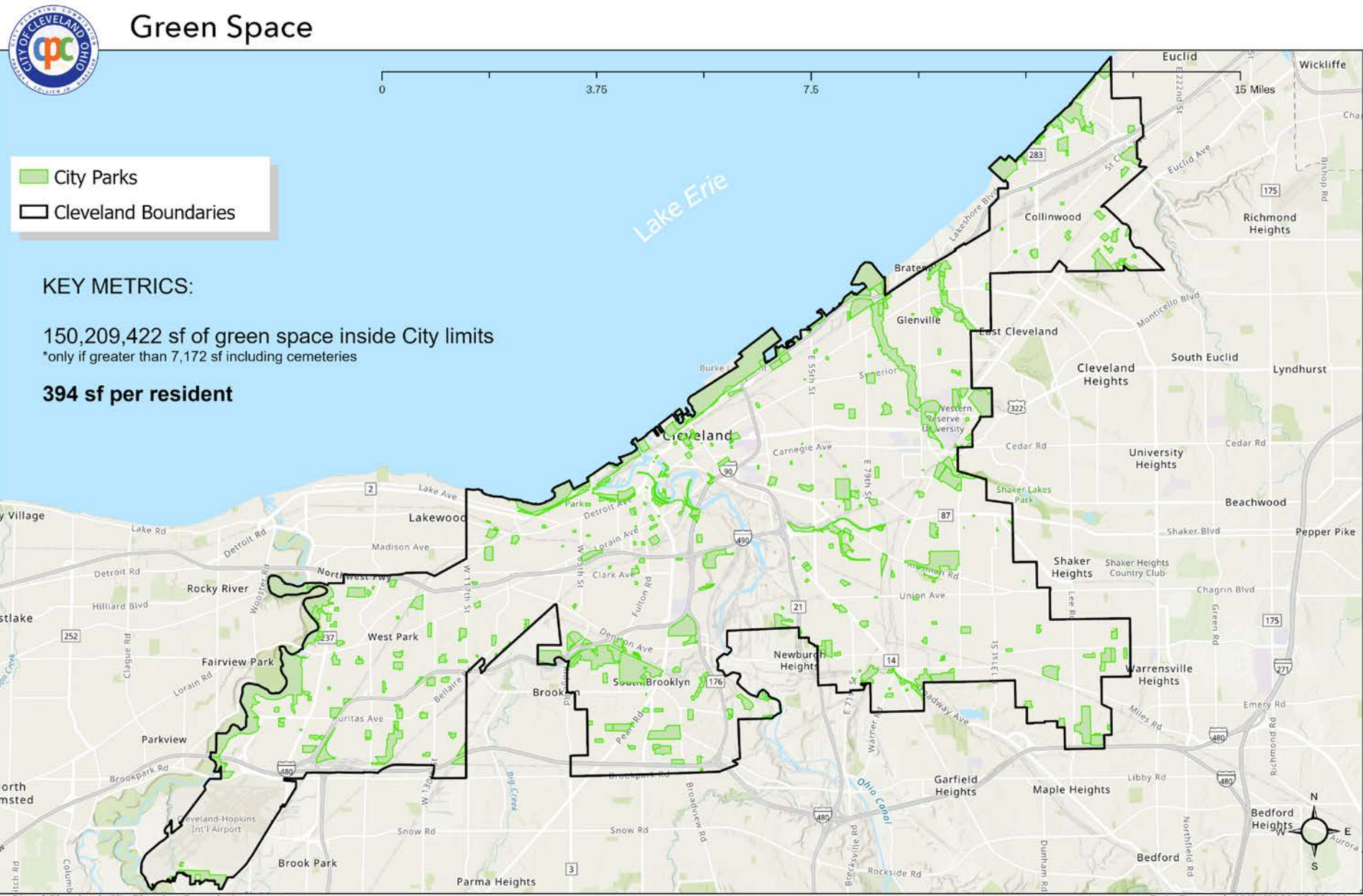


City of Dubai UAE
LEED for Cities Platinum 2019

Credit: Renewable Energy

Percent of total power supply and thermal energy supply met by renewable power

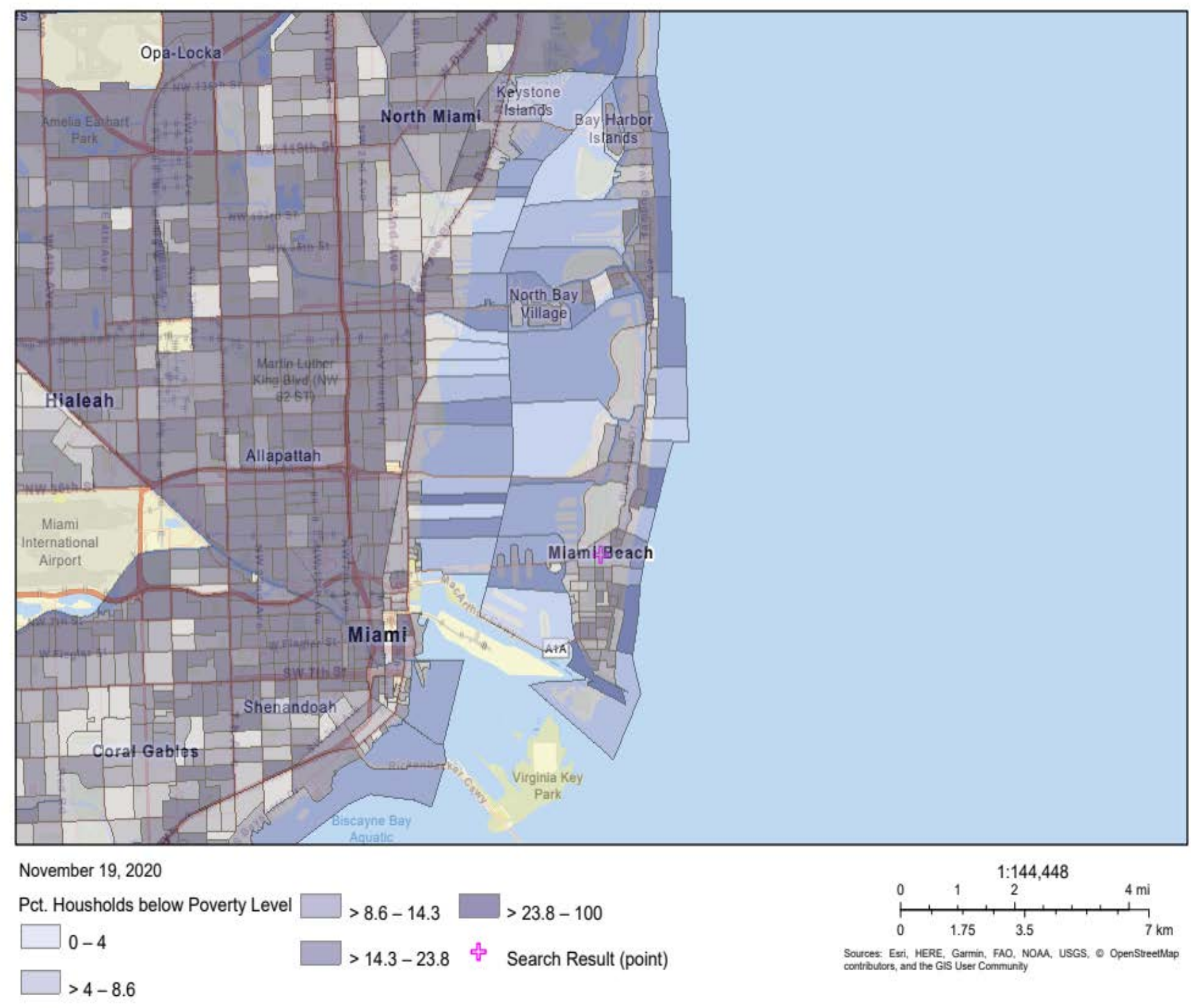
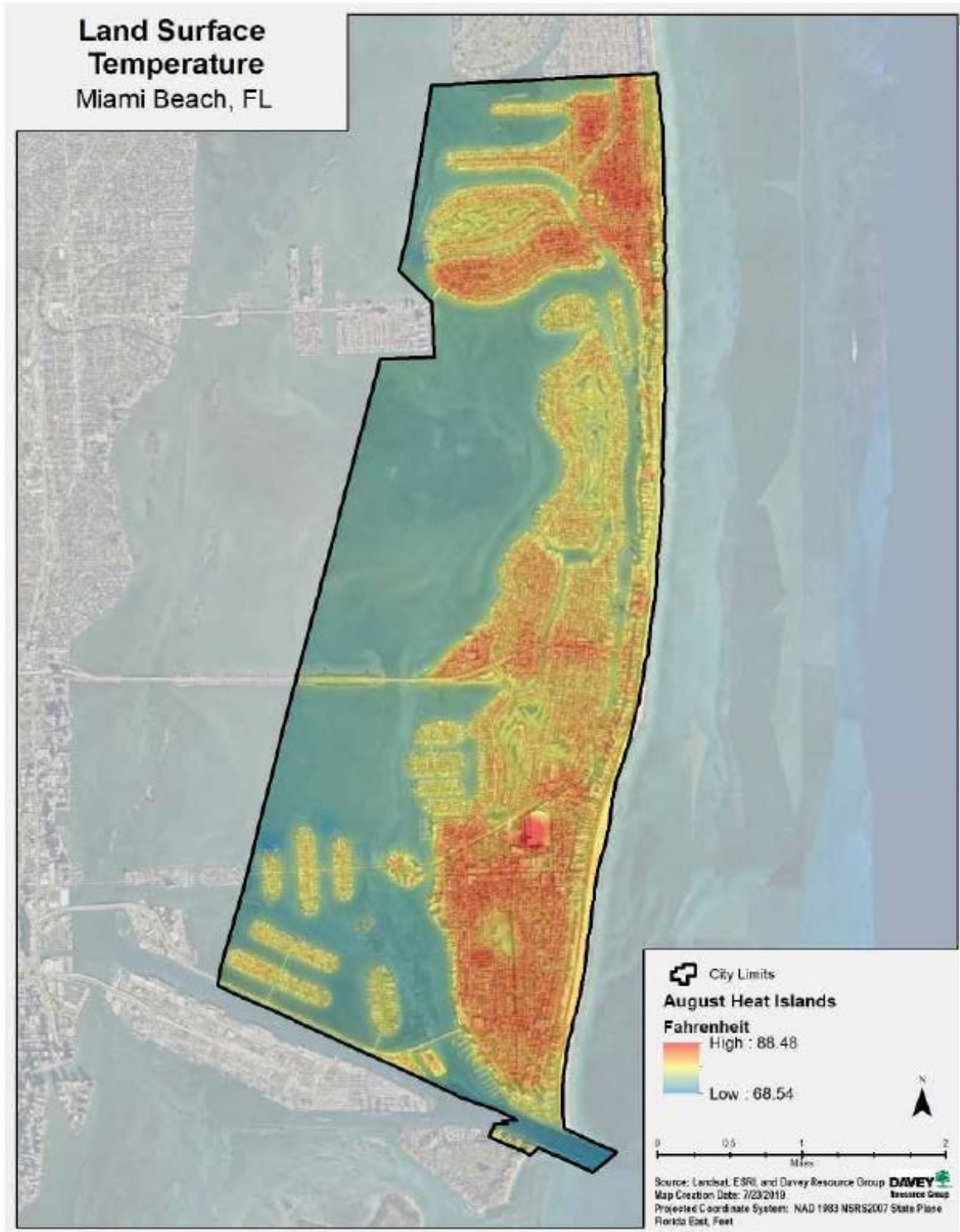
Credit: Green Spaces



70% of residents must live a ½ mile walk distance from green spaces

Credit: Environmental Justice

Demonstrate progress in reducing risks and exposure to priority EJ conditions in priority areas



City of Miami Beach, FL
LEED for Cities Gold 2021

Credits: Innovation and Regional Priority

To use the power of greenery as a public health strategy in urban neighborhoods.

City of Louisville, KY's Holistic Human Health IN Credit



WHAT IF WE COULD DESIGN CITIES THAT IMPROVED OUR HEALTH?

The Green Heart Project explores how we can design cities to improve our health. The Green Heart Project will create a new blueprint for the way we build cities - a greener one that makes it easier to be healthy.

Our environment is made up of the infrastructure around us, buildings, roads, parks, sidewalks, sewers, and power lines. Our environment has a profound impact on how healthy we can be; we must have healthy air, water, and soil to be healthy people.

IN MANY WAYS, WE'VE BUILT OUR CITY ENVIRONMENT TO WORK AGAINST OUR HEALTH



Louisville has received an "F" from the American Lung Association for annual ozone days since 2012.



Our air quality is worse than most other places in Kentucky.



Our tree canopy loses about 54,000 trees per year.



Our aging sewer system is often overwhelmed by stormwater



The way we've designed our streets can make it difficult to access parks and green spaces.



THE GREEN HEART PROJECT WILL CREATE A NEW BLUEPRINT FOR CITIES

The Green Heart Project will test a new neighborhood design to learn how greenery, plants like trees, shrubs, grasses, and flowers, impact the health of neighborhood and the people who live there. Green Heart will find out if increasing green spaces can:



Reduce air pollution



Reduce stress



Increase interaction between people



Decrease risk of diabetes, obesity, and heart disease



Increase physical activity and time spent outside

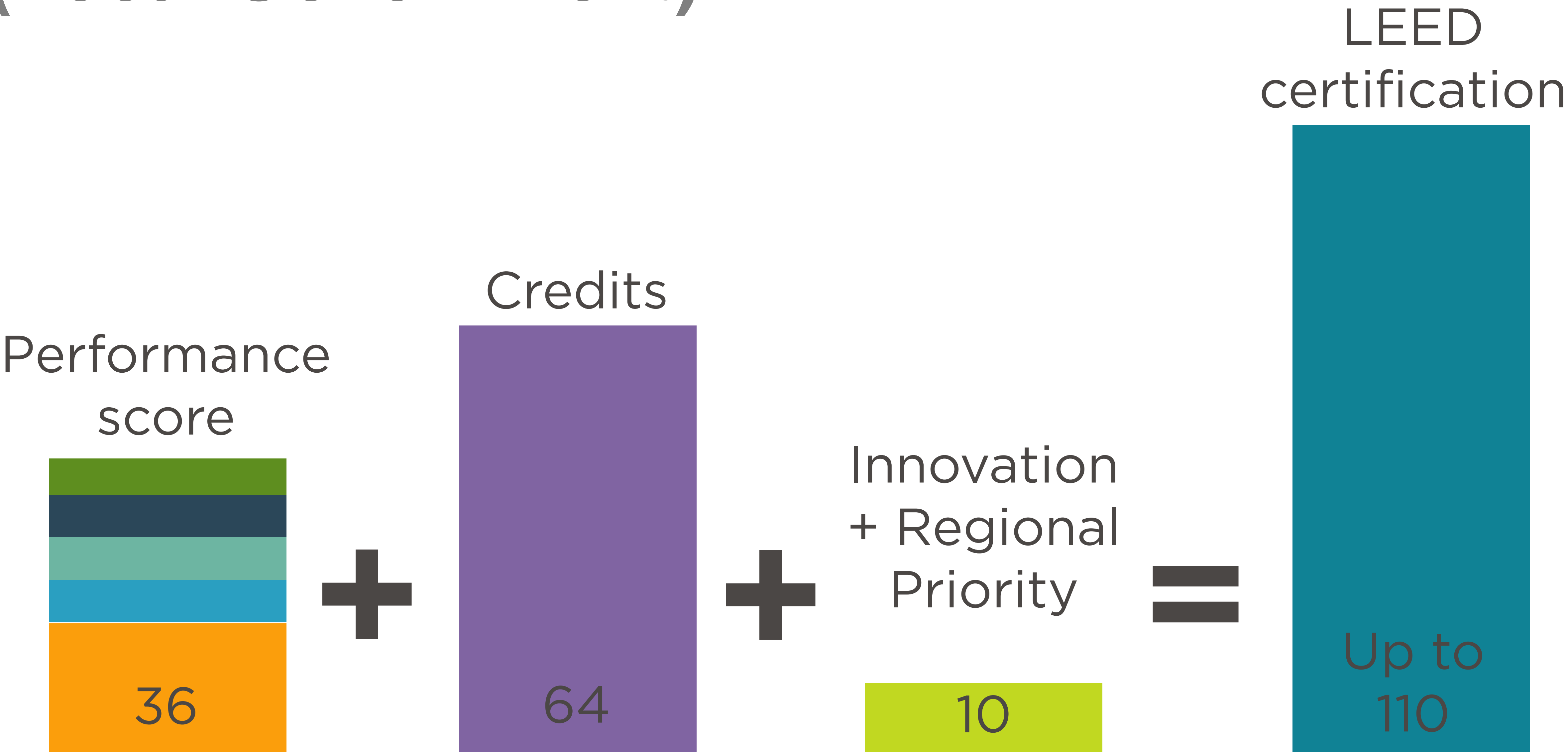
THE GREEN HEART PROJECT WILL TAKE FIVE YEARS TO COMPLETE

In year one we measured air pollution, tree canopy, and health of people in the project community. Now, we are planting trees, shrubs, and grasses. Next, over the course of three years, we'll track changes in air quality, tree canopy, and health to understand how increasing green space impacted the neighborhood.



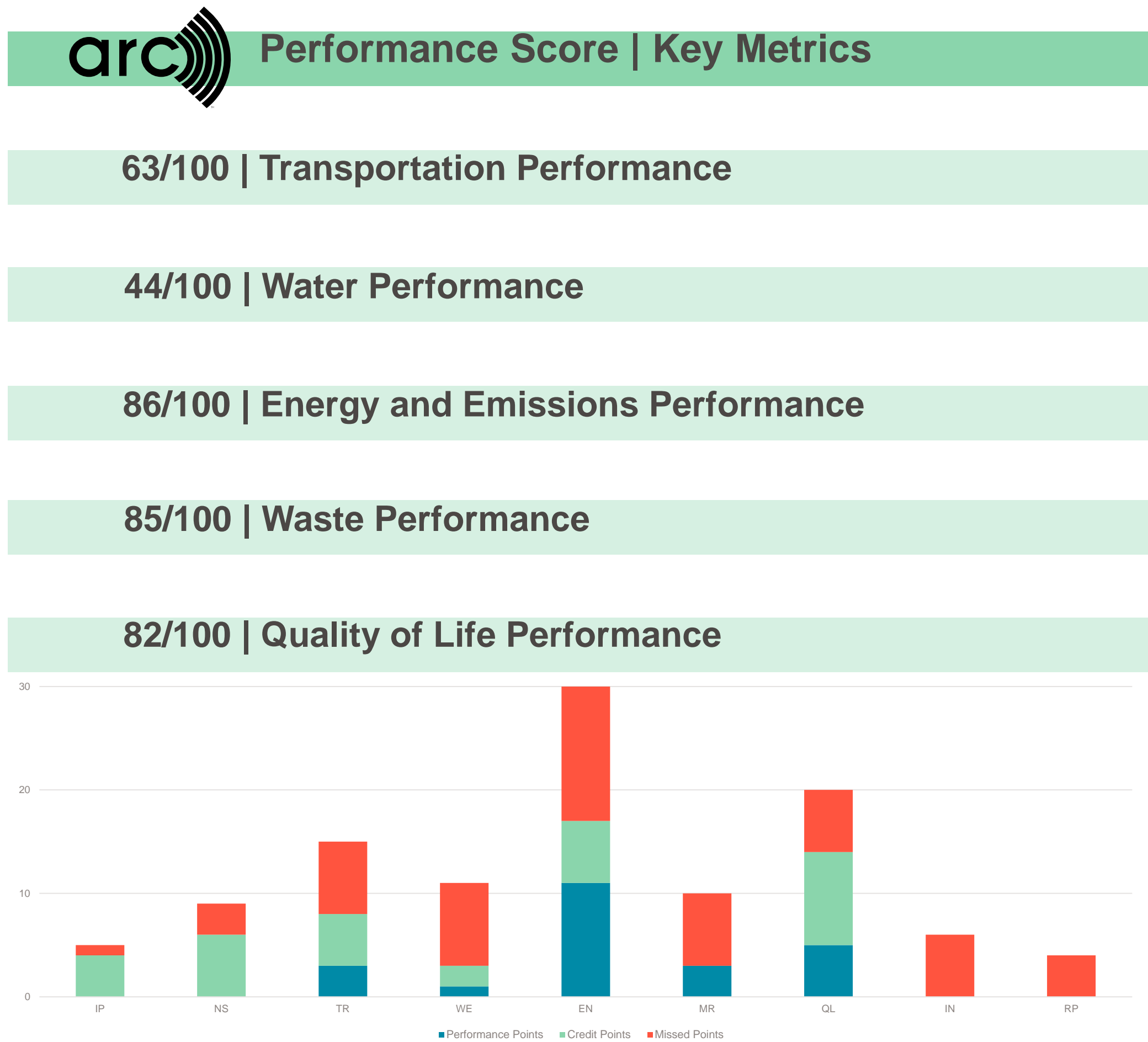
Copyright© 2021 U.S. Green Building Council

Points and Scoring (Local Government)



Certification Overview

The City of Greensboro achieved LEED Cities Silver certification by earning 55 points out of the possible 110 points available across nine credit categories as illustrated. Some of the most significant strategies that contributed to the certification include the city's focused approach towards integrative planning process and community engagement, green building policy and incentives, energy and greenhouse gas emissions management, civic and community engagement aimed at improved quality of life of all its people.



Category	Points Achieved/ Points Available
INTEGRATIVE PROCESS (IP)	4/5
NATURAL SYSTEMS AND ECOLOGY (NS)	6/9
TRANSPORTATION AND LAND USE (TR)	8/15
WATER EFFICIENCY (WE)	3/11
ENERGY AND GREENHOUSE GAS EMISSIONS (EN)	17/30
MATERIALS AND RESOURCES (MR)	3/10
QUALITY OF LIFE (QL)	14/20
INNOVATION (IN)	0/6
REGIONAL PRIORITY (RP)	0/4
TOTAL POINTS ACHIEVED	55/110

A large, stylized black leaf graphic with a light blue outline, positioned on the left side of the image. The leaf has several lobes and a prominent central vein.

**LEED for Cities
accelerates
sustainability
and climate
action.**

LEED for Cities provides a comprehensive management framework for sustainability.



Link to the 2021 Forbes Ignite report:

https://uploads-ssl.webflow.com/614a718743771a249c5580eb/61591cd0245bc16f56c8f40a_The%20Rise%20of%20the%20Chief%20Sustainability%20Officer%20Report.pdf



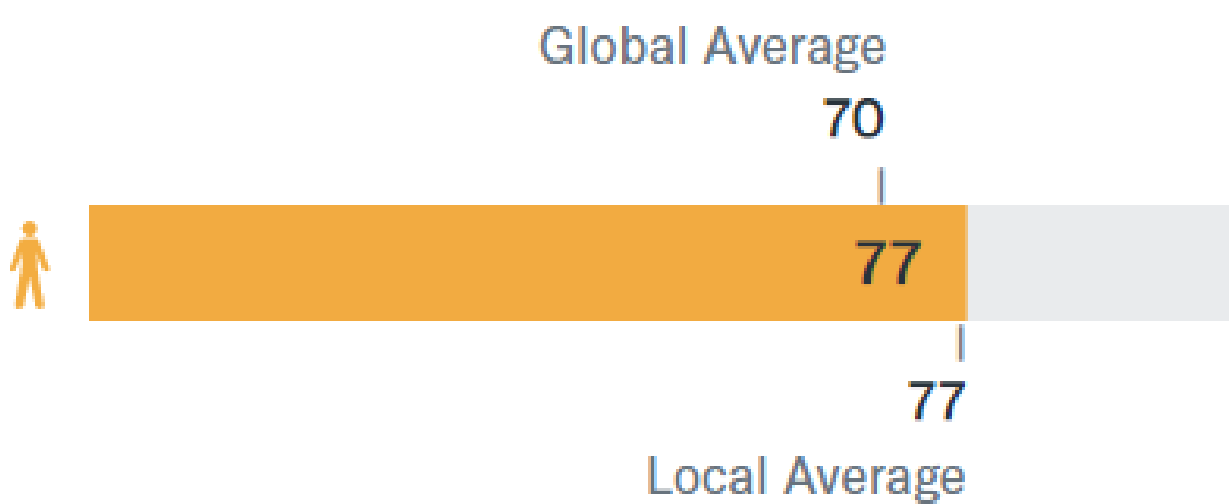
Projects benchmark performance and commit to continuous improvement.

City of Sapporo, Japan | LEED for Cities Platinum 2020



Current Quality of Life Score

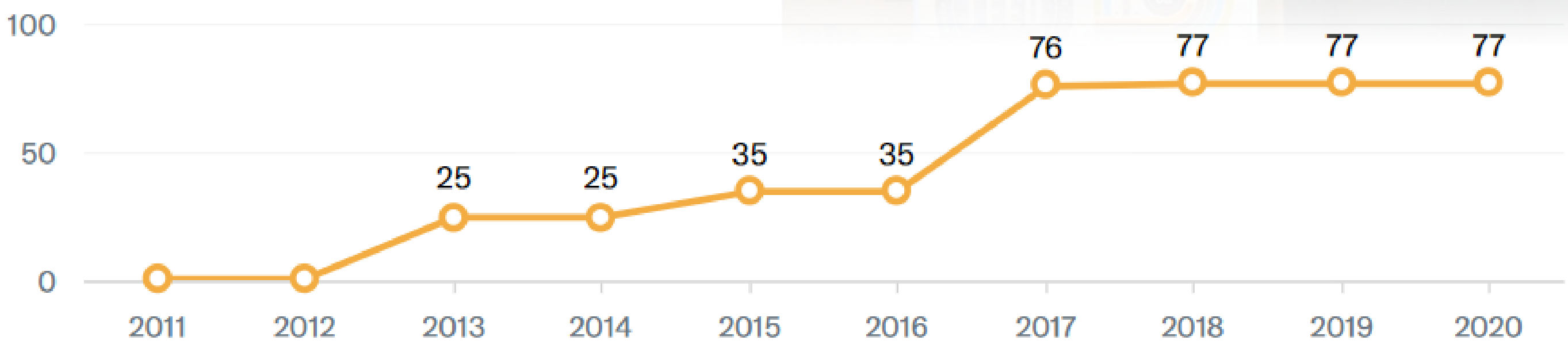
 **77/100**



Annual average Arc Quality of Life Score

— Last 10 years

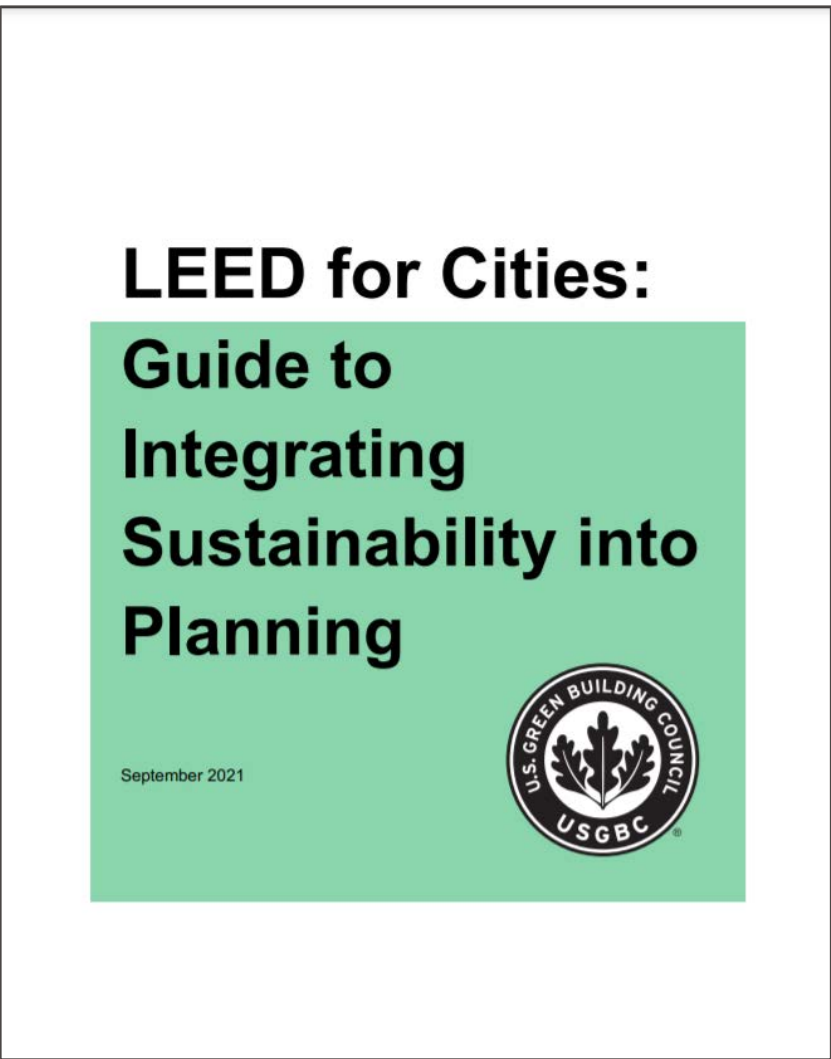
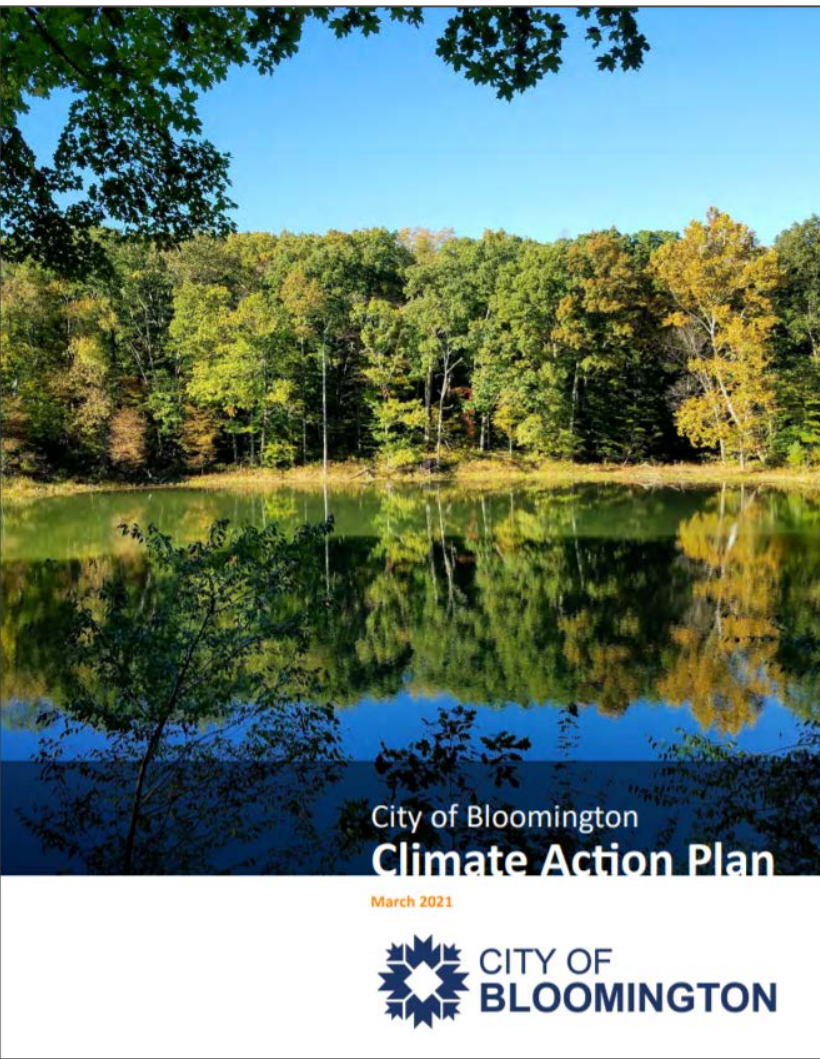
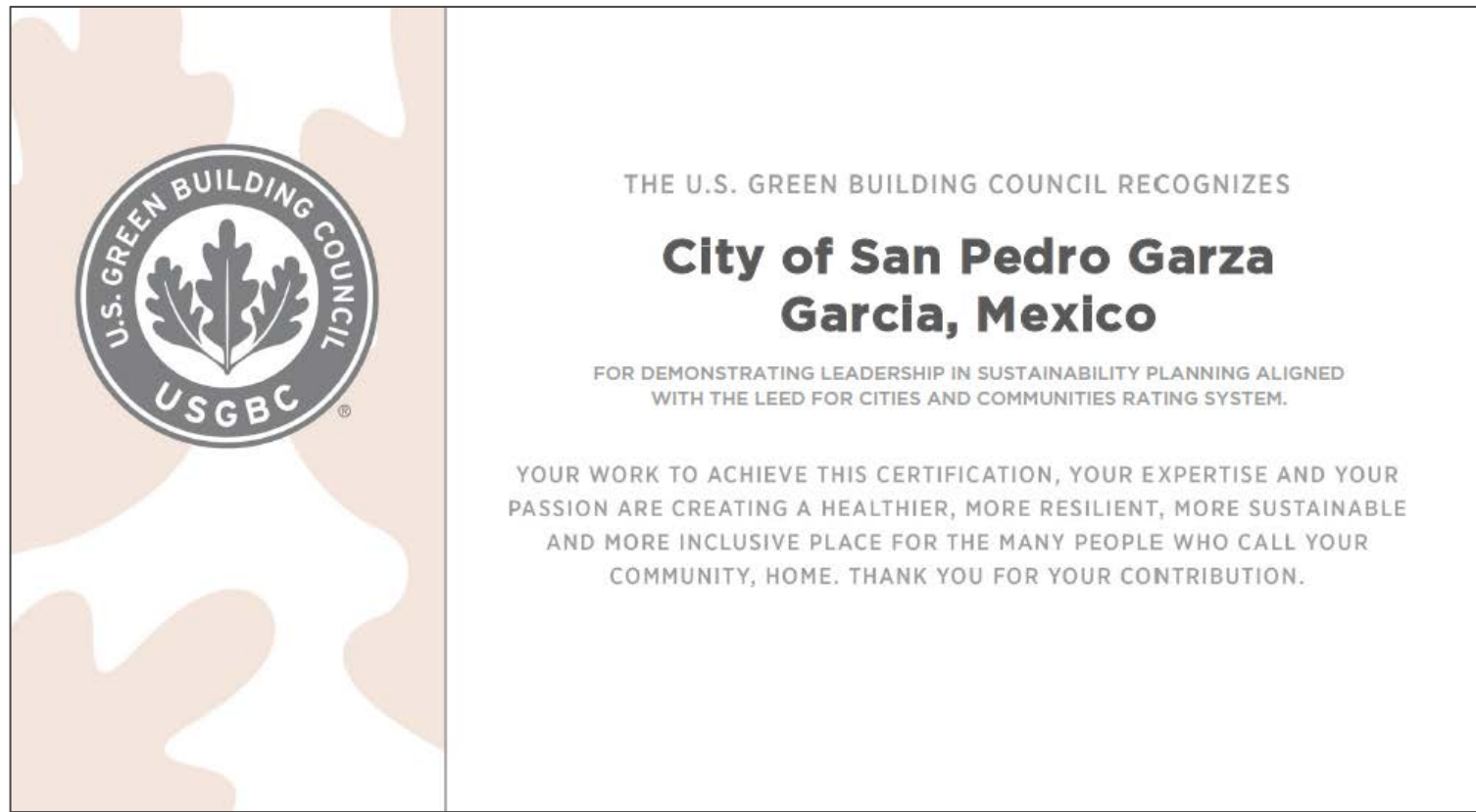
53/100



Quality of Life Score calculated for each year



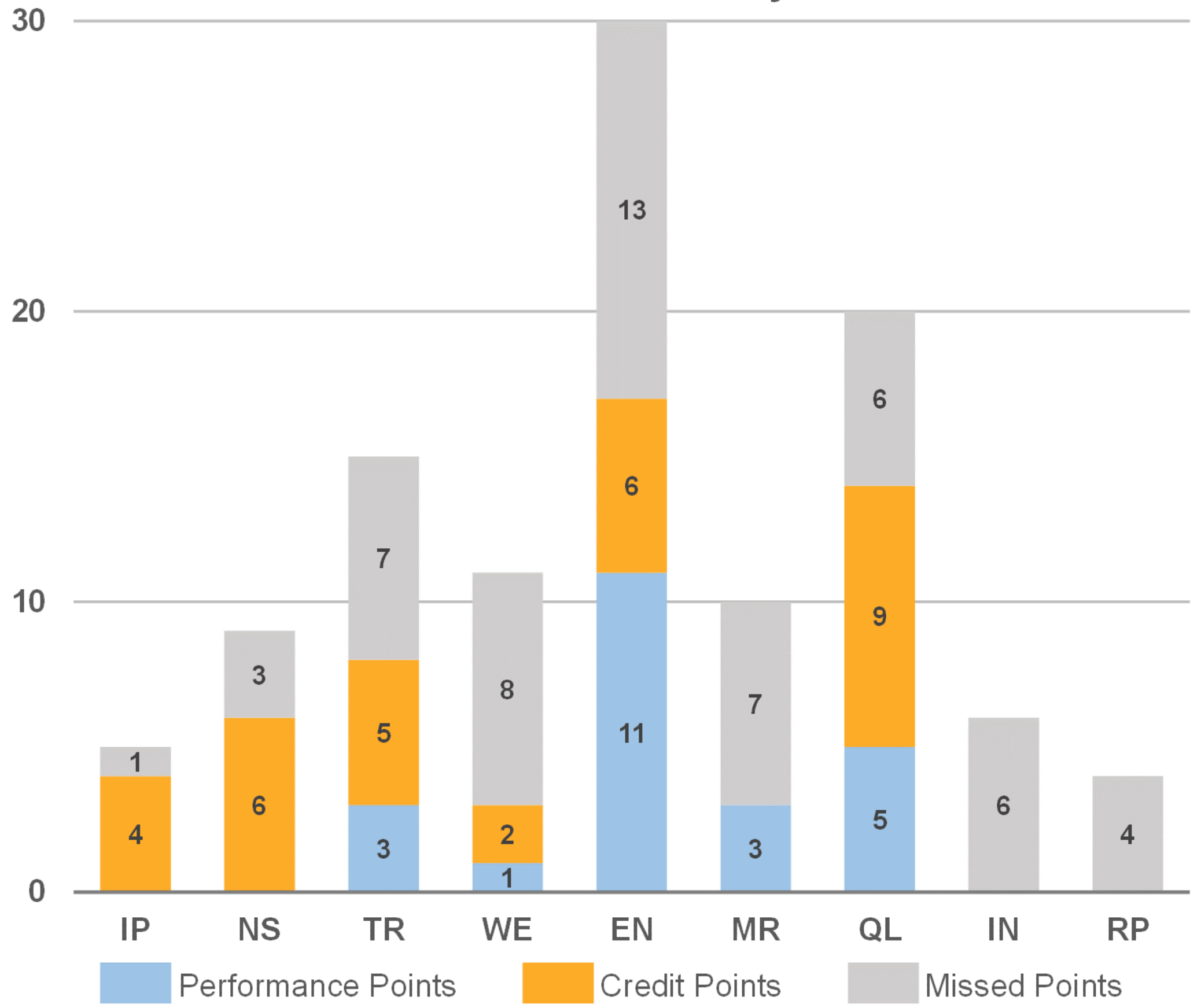
They set bold targets and align comprehensive, sustainability and climate plans with the framework.





Results reveal immediate gaps, influencing policy, budgets, codes and ordinances.

Greensboro - LEED Silver Certification Score Summary



Sustainability Action Plan
Chapter 5

Strategy 7B. Develop New Recycling Planning and Regulations

- › All users of solid waste pick up services should be charged on the same basis; that is, all users be charged solely through the general fund, or all users be charged through the general fund and a fee basis that is the same for all.
- › Recycling services be provided to all users at no other charge than through the general fund or standard service fee.
- › Modify the Land Development Ordinance to incentivize the provision of recycling facilities on site. After the first two recommendations are achieved, modify the Land Development Ordinance to require new developments to offer recycling facilities onsite.
- › After the three preceding recommendations have been implemented, Greensboro will then consider how to achieve the goal of mandatory recycling, with an appropriate enforcement mechanism.

Strategy 7C. Develop a Recycling Incentive Program

- › Continue to pursue partnering opportunities with third-party providers of recycling incentive programs.
- › Consider a smaller scale pilot program, perhaps a 10,000 home pilot.
- › Incentives would be based on a coupon program where recycling customers would receive coupons to receive discounts for products based on their participation. Coupons would be for local businesses when possible.

Strategy 7D. Eliminate Plastic Bags

- › Develop a zero plastic bag policy for over-the-counter sales in cooperation with local retailers

Strategy 7E. Develop a Food Waste Handling and Processing Program

- › Implement a pilot program for composting food waste from residential and business sources; set an annual target for tons of food waste processed; and develop a pathway for scaling up the pilot program to operate as an integral component of the City's solid waste program.
- › Seek opportunities for partnering with area businesses, institutions, and non-profits to expand and enhance food waste reduction and composting initiatives.
- › Explore the feasibility of using anaerobic digestion to convert food waste to biogas.

Other Potential Waste and Recycling Strategies

Practices that have been developed by other cities to reduce GHG emissions associated with waste reduction and recycling include:

- › Establish composting for municipal or community locations
- › Promote "zero waste" events



Cross departmental coordination helps to institutionalize sustainability and empower champions.

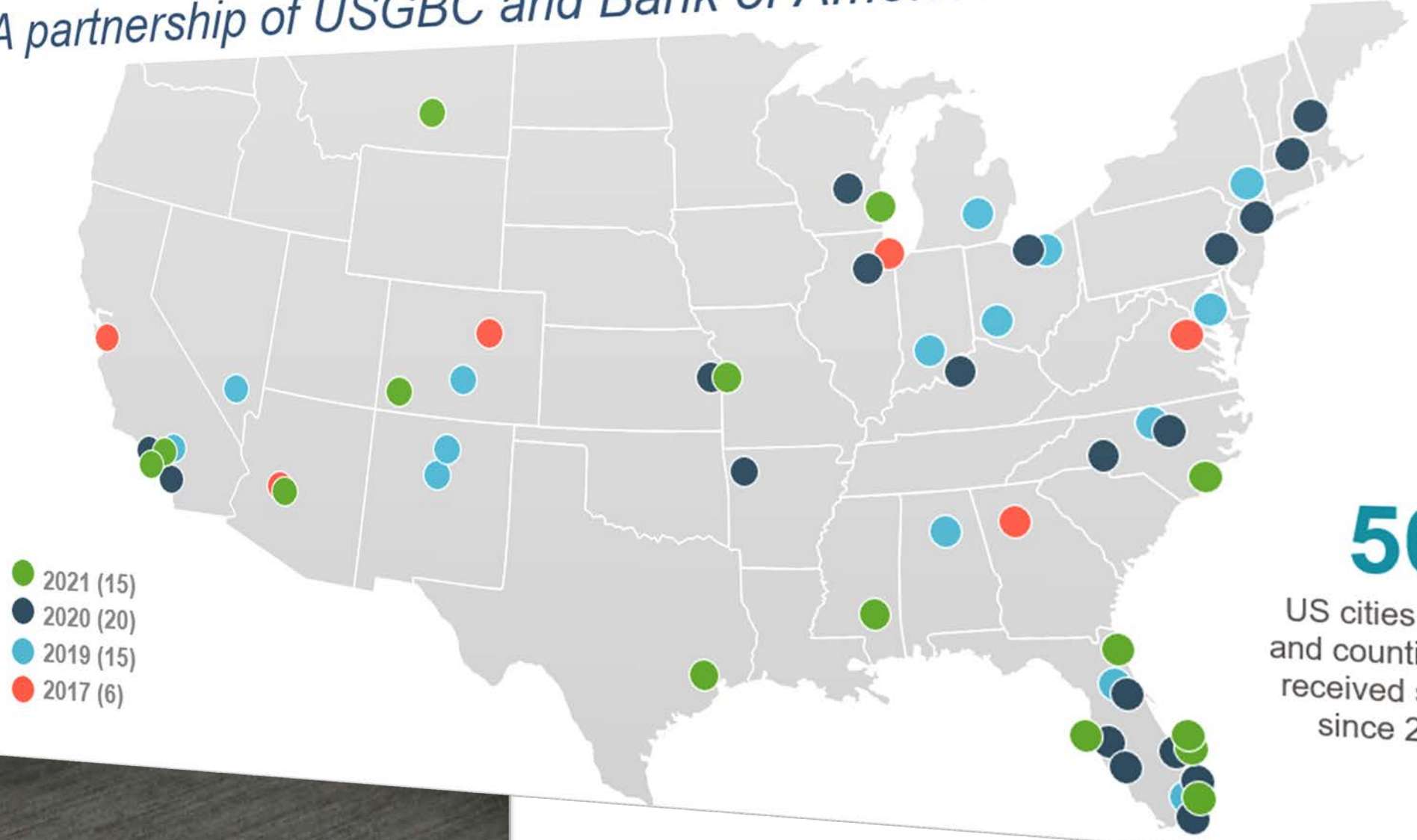




Peer to peer collaboration fosters innovation, sharing, and builds momentum.



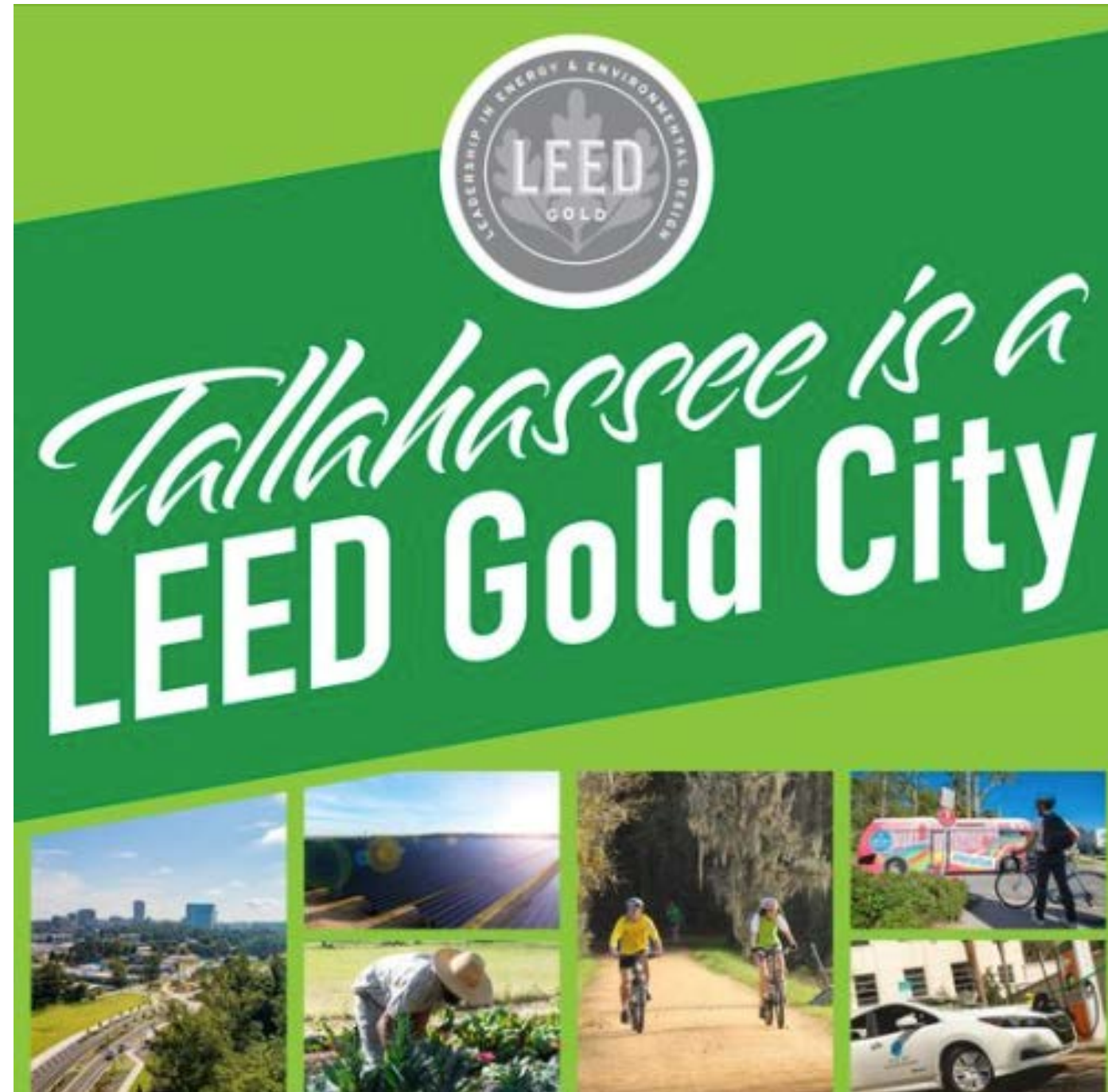
LEED for Cities Local Government Leadership Program *A partnership of USGBC and Bank of America*



56

US cities, towns and counties have received support since 2017.

Cities are engaging investors and partners to accelerate ambition and advance progress.



“Stay focused on and committed to the long-game of green building and sustainability.” Mayor Tim Keller, City of Albuquerque, NM

A large, stylized black silhouette of an oak leaf is positioned on the left side of the image, extending from the bottom left towards the center. The leaf has several lobes and a prominent vein running along its length. The background is a solid teal color, and the right side of the image features a vertical gradient bar transitioning from a darker teal at the top to a lighter teal at the bottom.

Getting Started

Do you need to register?

The program fees for local governments are:

- USGBC Silver Member \$10,500
- Non-Member \$12,000 (includes \$1,500 Silver membership)

Local governments pay a one-time registration fee of \$2,500, included above.

For future budgeting purposes, recertification is on a 5-year cycle and the current review fee for local governments in LEED for Cities is \$8,000.

How to register

<https://www.usgbc.org/leed/rating-systems/leed-for-cities#tools>

Tools and resources

+ Rating system resources

- Marketing materials

- LEED for Cities
 - LEED for Cities brochure
 - Getting Started slides
 - Guide to Certification
 - How to Register

+ Videos

+ Case studies

+ Articles

+ How to guides and publications

+ Webinars

+ Urban sustainability courses

+ Advocacy and policy resources at USGBC

+ Local Government Leadership Program

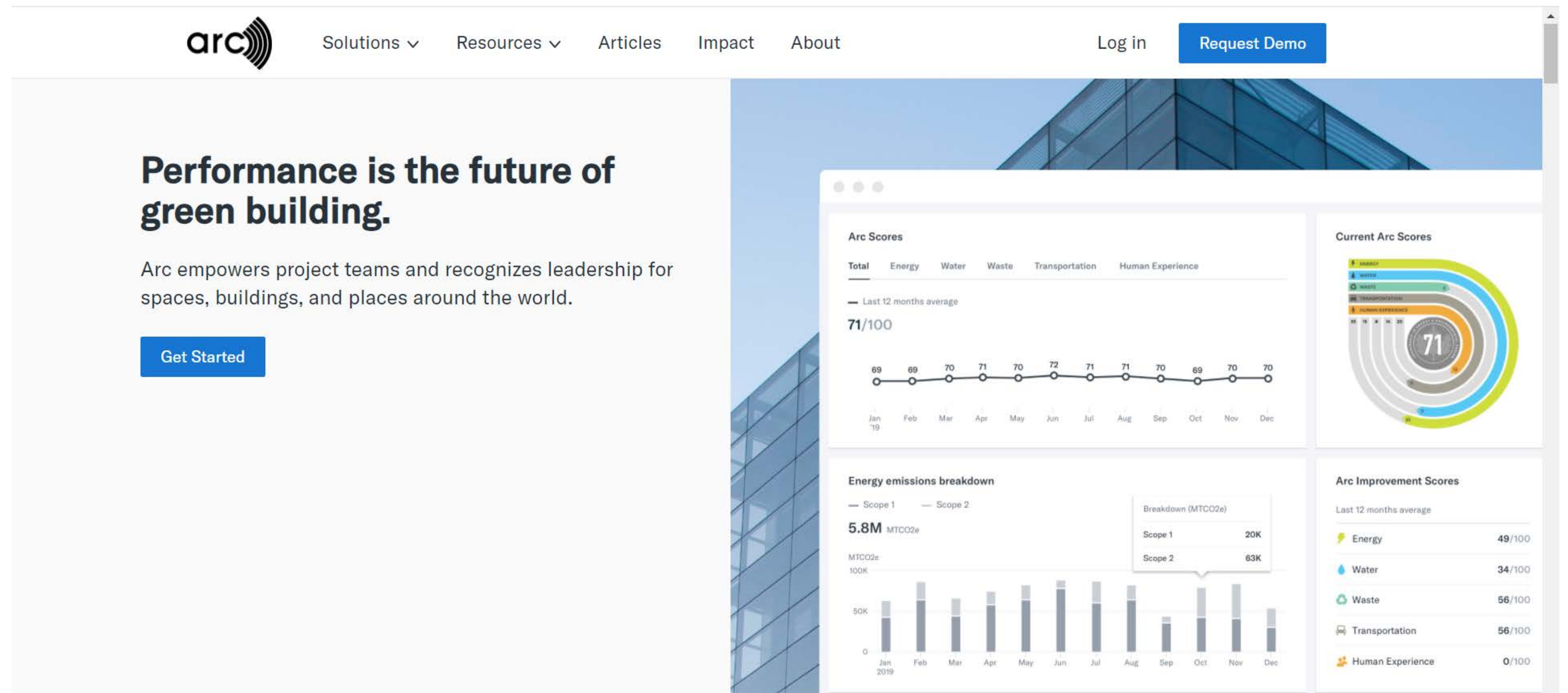
The screenshot shows a web browser window with the URL [usgbc.org/resources/how-register-local-government-leed-cities](https://www.usgbc.org/resources/how-register-local-government-leed-cities). The page features a navigation bar with links like 'About', 'LEED', 'Credentials', 'Education', 'Membership', 'Store', 'Resources', 'Directory', 'Articles', 'Contact', and 'Account'. The main content area is titled 'Rating system' and 'How to Register a Local Government in LEED for Cities'. It displays a PDF document preview with a 'DOWNLOAD' button. Below the preview, it states 'Format: PDF' and provides a description: 'This document provides the steps to register a local government in LEED for Cities, including setting up an account on the Arc performance platform.' A 'Comments' button is located at the bottom right.

Are you already registered?

If you answered yes, then you can get started anytime.

There are many tools and resources available to you, including our staff.

- ✓ LEED for Cities Local Government Resources on Dropbox
- ✓ Access to an account on Arc to benchmark your performance
- ✓ Custom certification Application



Our home page is loaded with free tools and resources.

<https://www.usgbc.org/leed/rating-systems/leed-for-cities#tools>

Tools and resources

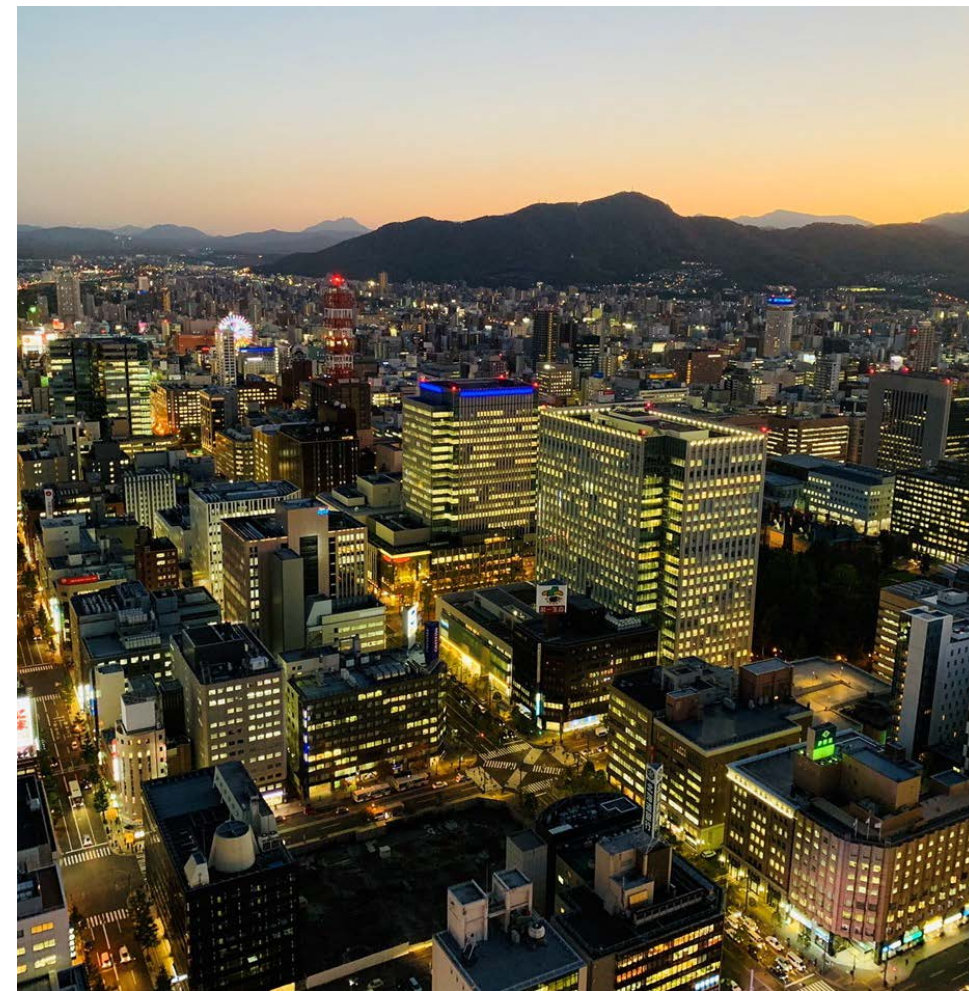
- + Rating system resources
- Marketing materials
 - LEED for Cities
 - LEED for Cities brochure
 - Getting Started slides
 - Guide to Certification
 - How to Register
- + Videos
- + Case studies
- + Articles
- + How to guides and publications
- + Webinars
- + Urban sustainability courses
- + Advocacy and policy resources at USGBC
- + Local Government Leadership Program

- ✓ Download the rating systems
- ✓ Review getting started resources
- ✓ Check out our case studies and connect to the project directory
- ✓ Read how to guides and publications
- ✓ Watch our recordings

2022 LEED for Cities Showcase



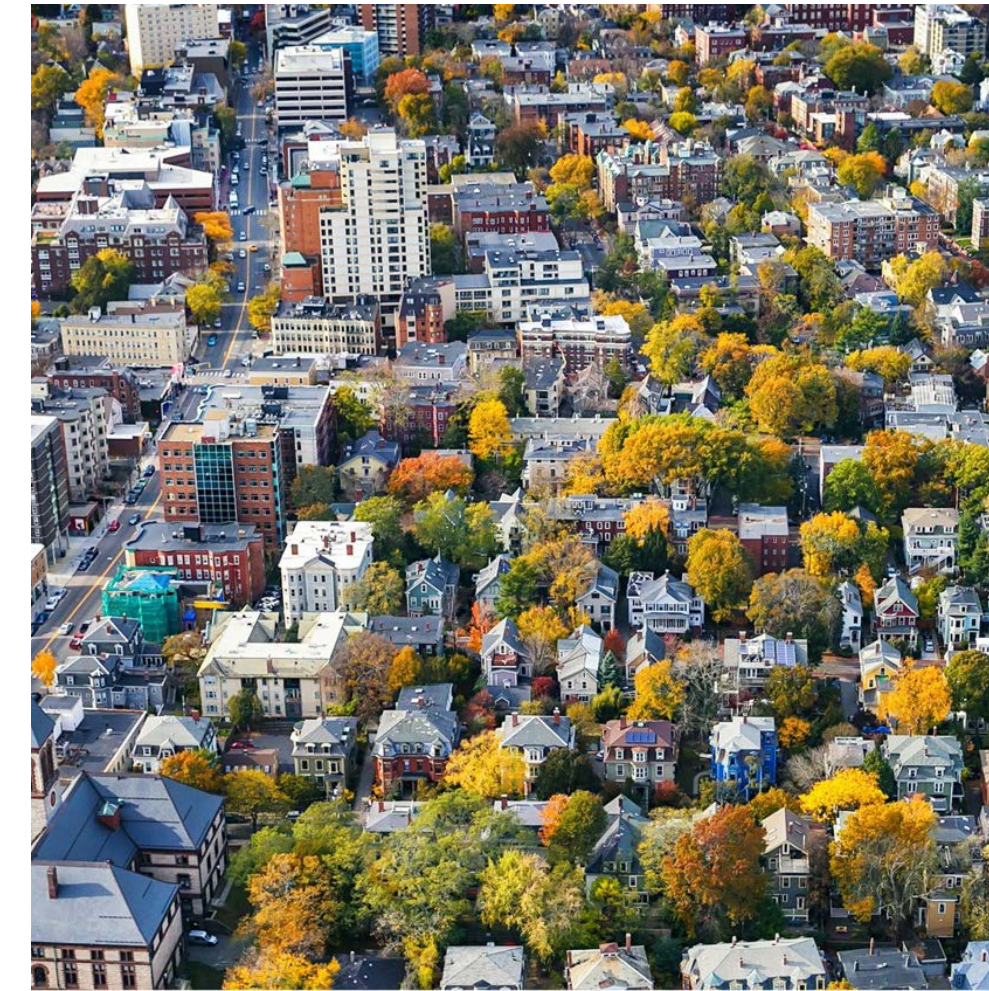
Santa Monica
March 16th



Global Cities
May 18th



Florida Projects
July 20th



Decarbonization
November 16th



Hilari Varnadore CC-P
Vice President for Cities
U.S. Green Building Council
cities@usgbc.org

Go to [Courses on Education @ USGBC](#) for on-demand education and CEUs

USGBC homepage | U.S. Green

usgbc.org

Paused

Update

Take the USGBC and GBCI community survey by March 1.

Share your feedback

Menu

USGBC Logo

About

LEED

Credentials

Education

Membership

Store

Resources

Directory

Articles

Donate

Account

Search

Professional education

LEED v4.1 education

LEED exam prep

K-12 education

Higher education

Courses on Education @USGBC

Events calendar

Subscribe →

of USGBC+ is here

Read now

A large, stylized black oak leaf graphic is positioned on the left side of the slide, partially overlapping the dark teal background. The leaf has a prominent central vein and several lobes.

Resources for Non-Local Govs

Advisor Certificate

LEED for Cities Studios

LEED for Communities

Q&A

- What are your sustainability and equity priorities?
- What challenges are you facing toward reaching your goals?
- What questions do you have for me?
- How can USGBC and LEED for Cities specifically, best support you?



