



Glendale Drought Management Plan

Glendale Water Services Department 6/27/22





Overview of Colorado River Conditions

The long-term drought has led to the following:

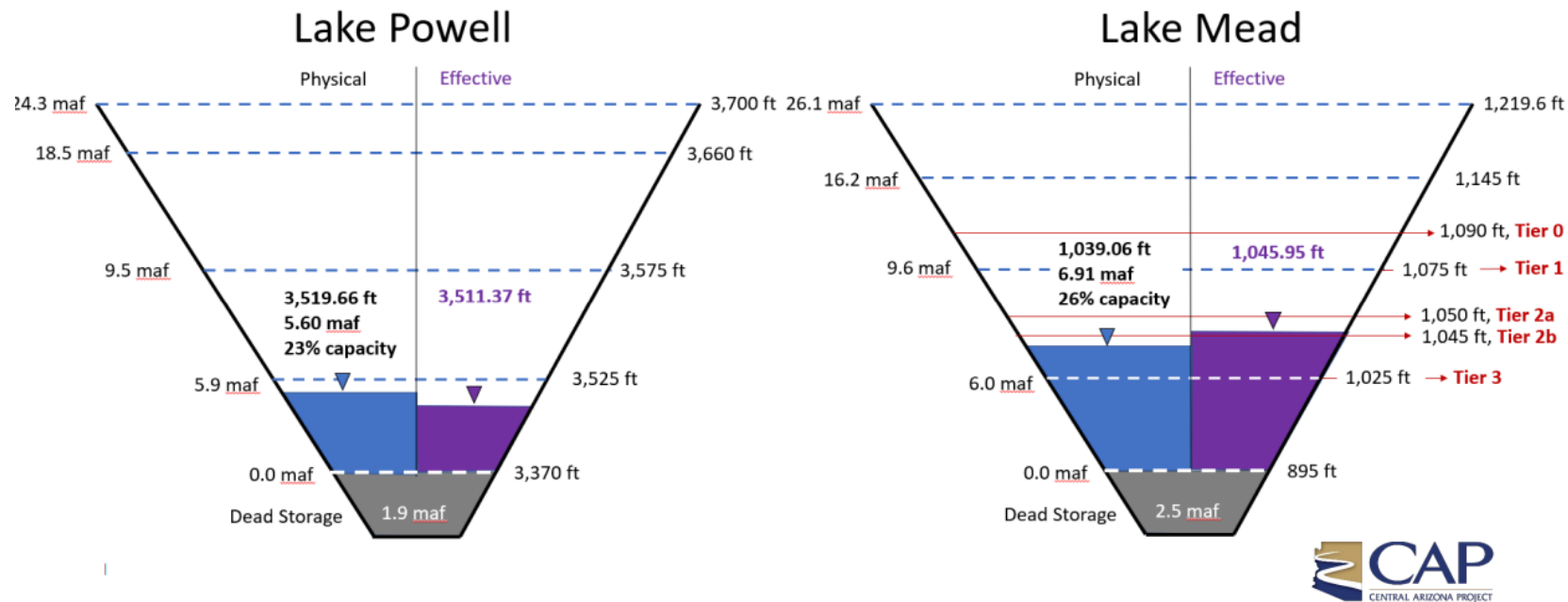
- Aridification of the Western U.S. which is accelerating shortages.
- The Colorado River now has a new estimated total yield of 10 to 11 million acre-feet (MAF) instead of 16.5 MAF.
- Historic low water levels in Lake Powell and Lake Mead.
- Uncertainty about power production at both Hoover and Glen Canyon Dams.



Overview of Colorado River Conditions

Lake Powell and Mead Contents

End of Calendar Year 2022 Projections
June 2022 24-Month Study Most Probable Inflow Scenario



Graphic Source: <https://library.cap-az.com/documents/public-information/stakeholder-meetings/June-23-2022-CAP-Water-Users-Briefing.pdf>



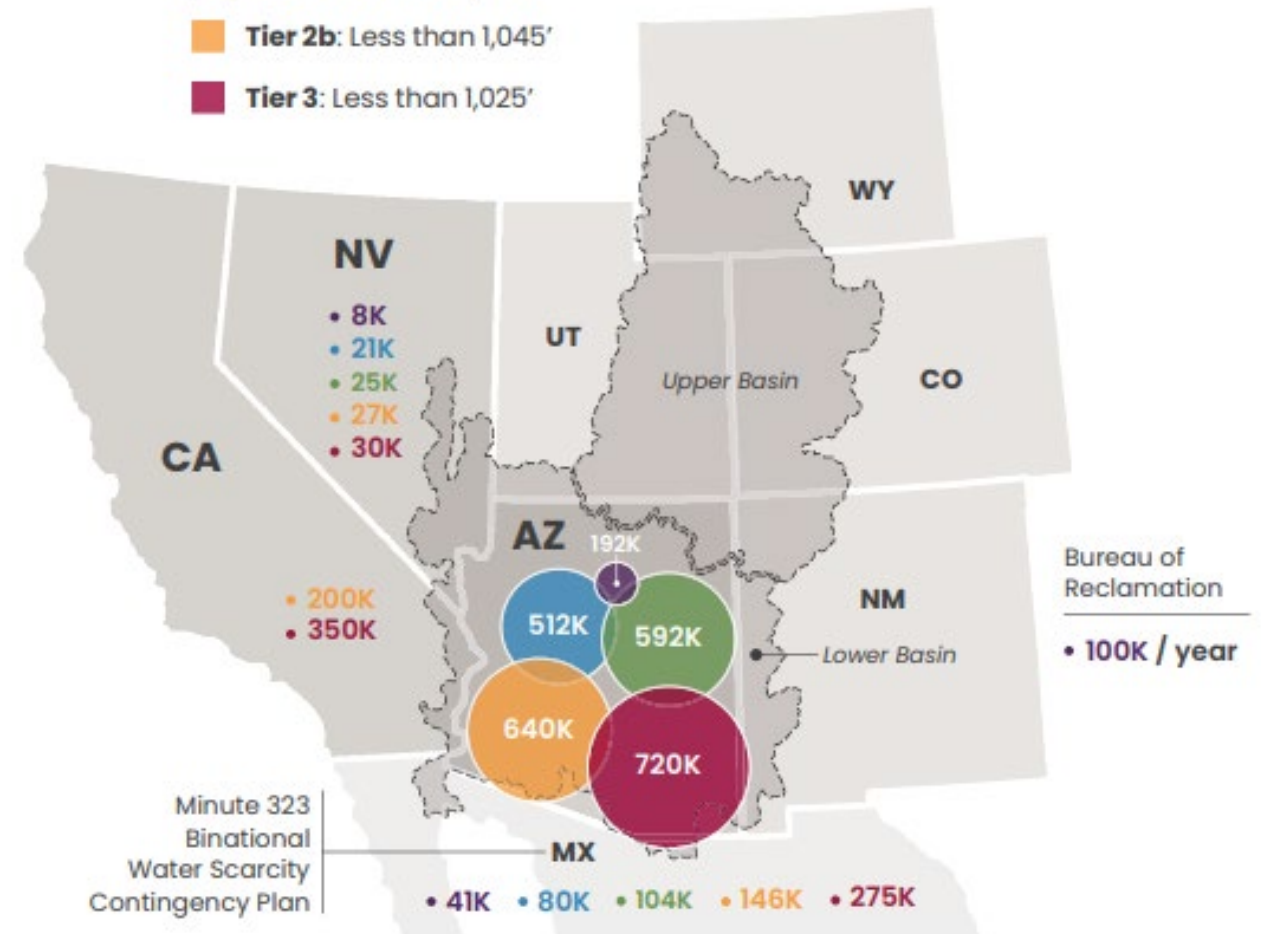
Drought Contingency Plan (2019)

Graphic Source: <https://www.cap-az.com/water/water-supply/adapting-to-shortage/colorado-river-shortage/>, go to View Fact Sheet.

LOWER COLORADO RIVER BASIN DCP CONTRIBUTIONS TO LAKE MEAD

IN ACRE-FEET PER ELEVATION PER YEAR

- Tier Zero:** Less than 1,090'
- Tier 1:** Less than 1,075'
- Tier 2:** Less than 1,050'
- Tier 2b:** Less than 1,045'
- Tier 3:** Less than 1,025'





More Colorado River Reductions on the Horizon

Reclamation official tells Colorado River states to conserve up to 4 million acre-feet of water

Feds: River water use to be slashed

As water crisis worsens on Colorado River, an urgent call for Western states to ‘act now’

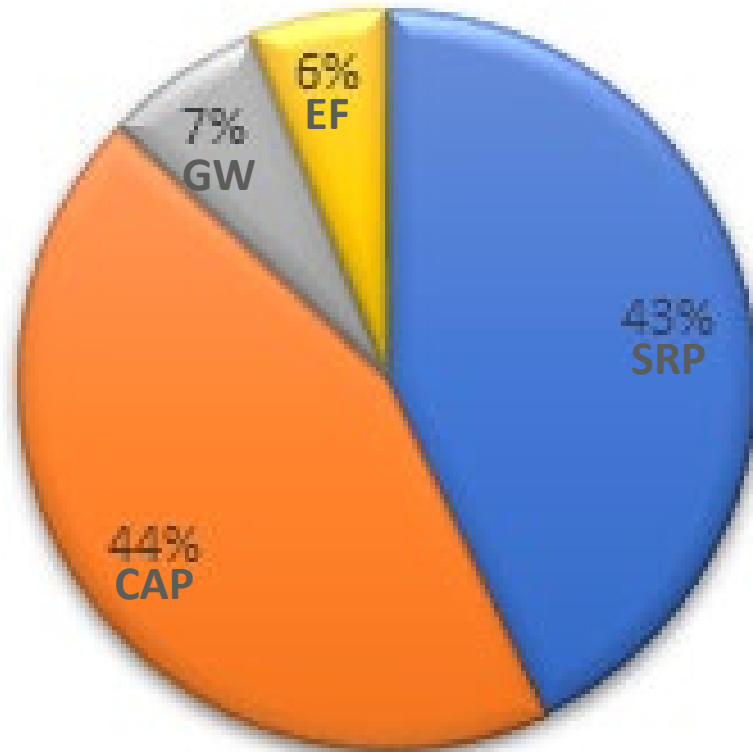
CAP not sure how much Colorado River water cities will get in 2023

AZ in negotiations with Colorado River basin states on additional cuts



Glendale's Water Resources

Glendale Water Portfolio





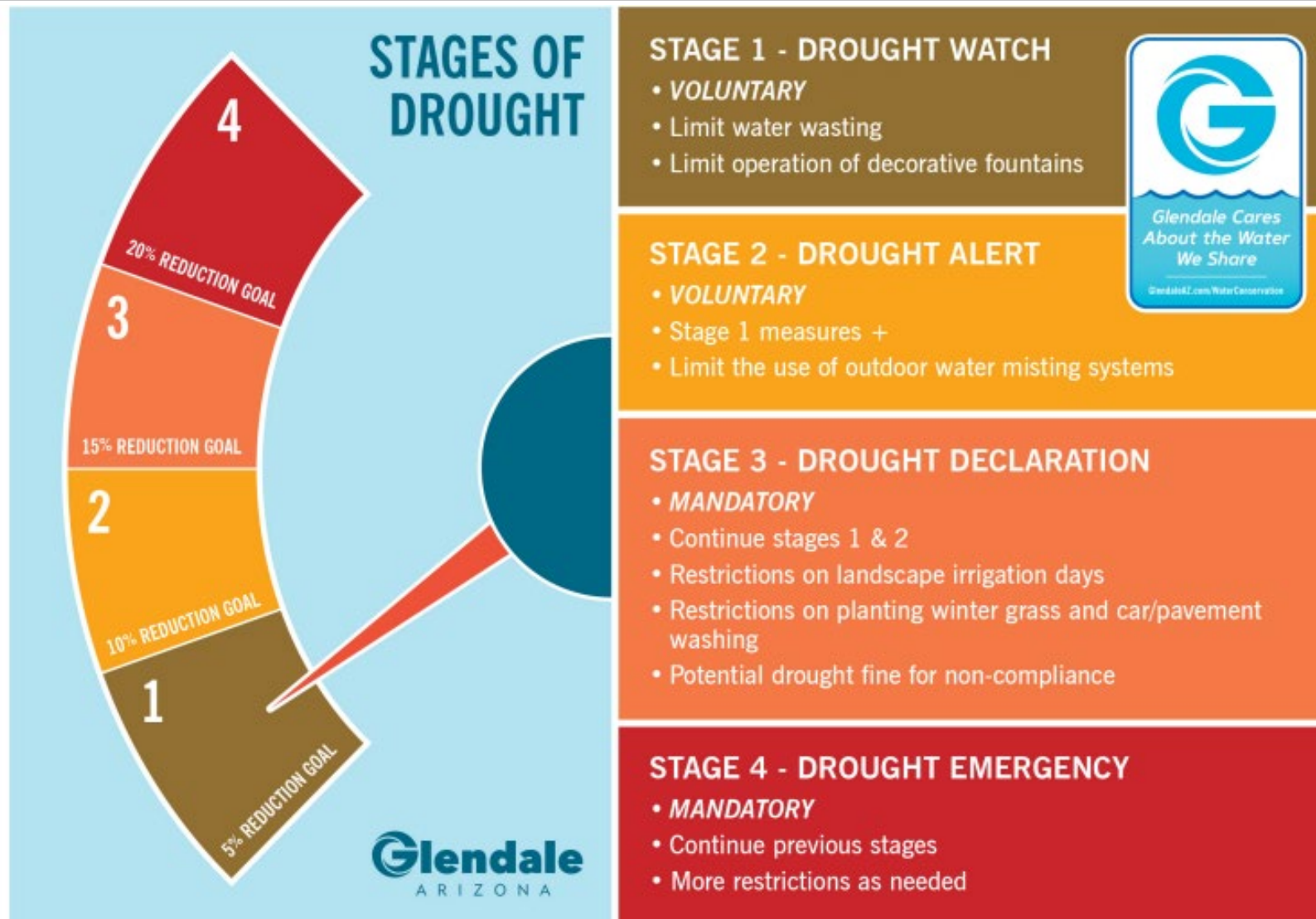
Drought Management Plan Overview

- It's a plan to prepare and respond to water shortages.
- Water reduction measures for the City and external customers.
- In the City Code – Chapter 33.
- Updated to correspond with surface water supply shortages.
- Continue to update plan as needed.





Drought Stages





Water Reduction Measures for City Properties and Operations

MEASURES	STAGE 1
WATER REDUCTION GOAL	5%
Provide water conservation technical assistance	X
Track and monitor water use at city properties	X
Notify customers about high water use	X
Prohibit water wasting	X
Prohibit the operation of decorative fountains	X
Prohibit winter grass unless effluent is used	X



Drought Management Team

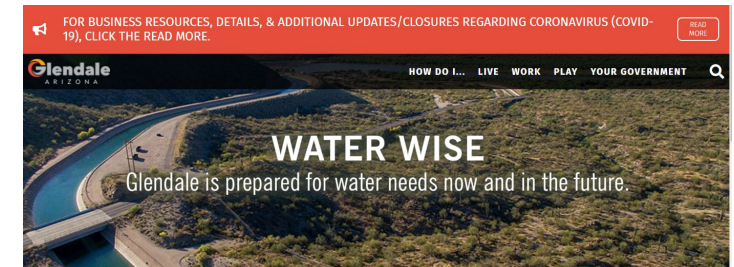
- Led by the Water Services Department
- Consists of an executive team and an implementation team
- Coordinate and communicate internally and externally
- Lead by example
- Meet water reduction goals



Drought Communications Plan

- Drought Preparedness webpage – www.glendaleaz.com/drought
- City's communication channels
- Fact Sheets for COG employees

Community Corner: Being Water Smart



Drought Preparedness

Glendale is prepared for drought!

The Southwestern United States, including Arizona, has been in a drought for more than 20 years. This has greatly impacted the Colorado River system including Lake Mead and Lake Powell. The Colorado River represents approximately 45% of Arizona's collective water supply. Considering Arizona's priority system, the city of Glendale's Colorado River supply will not be reduced in the immediate future. In other words, a water shortage on the Colorado River does not mean a water shortage at your tap.

Glendale has known for many years our Colorado River supplies could be cut and we have been preparing for this shortage for decades and will continue to do so. These preparations include:

- Securing in a diverse and robust water portfolio that includes renewable surface water, groundwater, and reclaimed water supplies
- Using reclaimed water to conserve potable water supplies
- Decreased reliance on groundwater
- Storing water underground for future use
- Investing in infrastructure, including wells to pump groundwater when surface water supplies may be reduced
- Supporting water conservation through ordinances and codes; developing conservation-based water rates; and offering an effective Water Conservation Program for people of all ages

While Glendale has a safe, secure, and reliable water supply now, we all need to continue to do our part to use water wisely. We know that water is precious in the desert and that every drop counts. Water conservation makes sense in the desert Southwest!

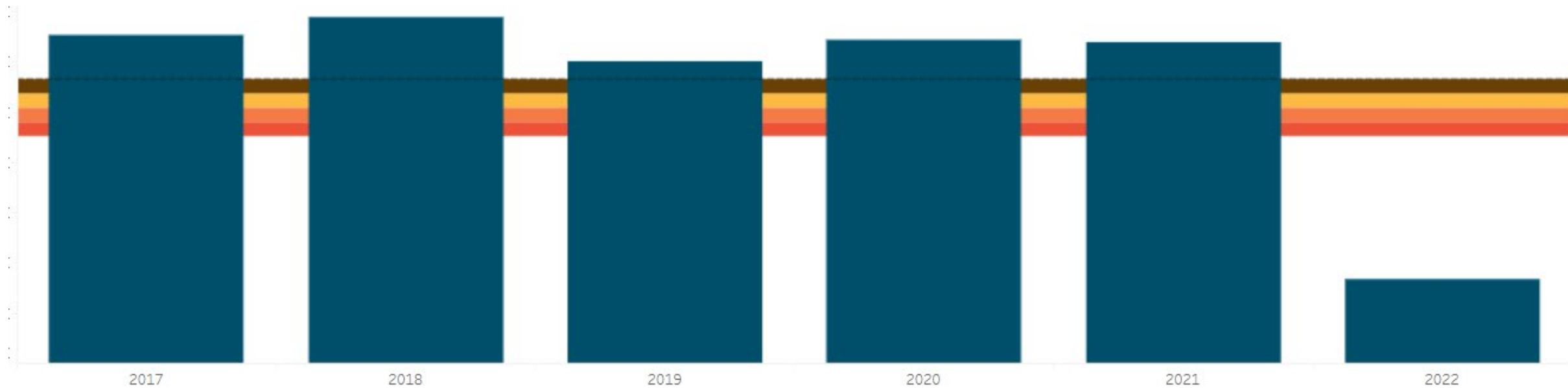
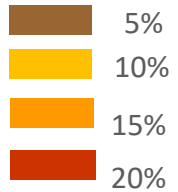
Questions? **We've Got Answers**

Where does Glendale's water come from?	+
Does Glendale have enough water resources for a growing community?	+
Frequently Asked Questions about Drought	+
What can I do to conserve water?	+
Where can I get additional information about drought?	+



Water Use Dashboard for City Properties

----- Average Water Use

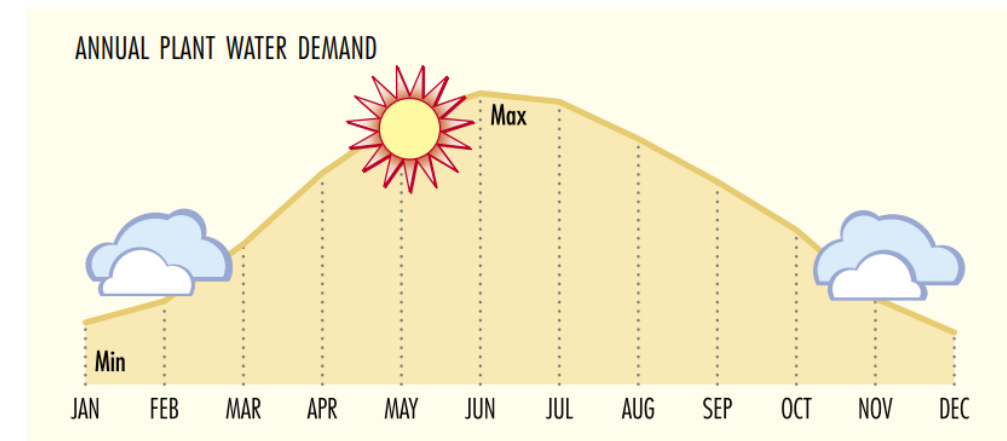
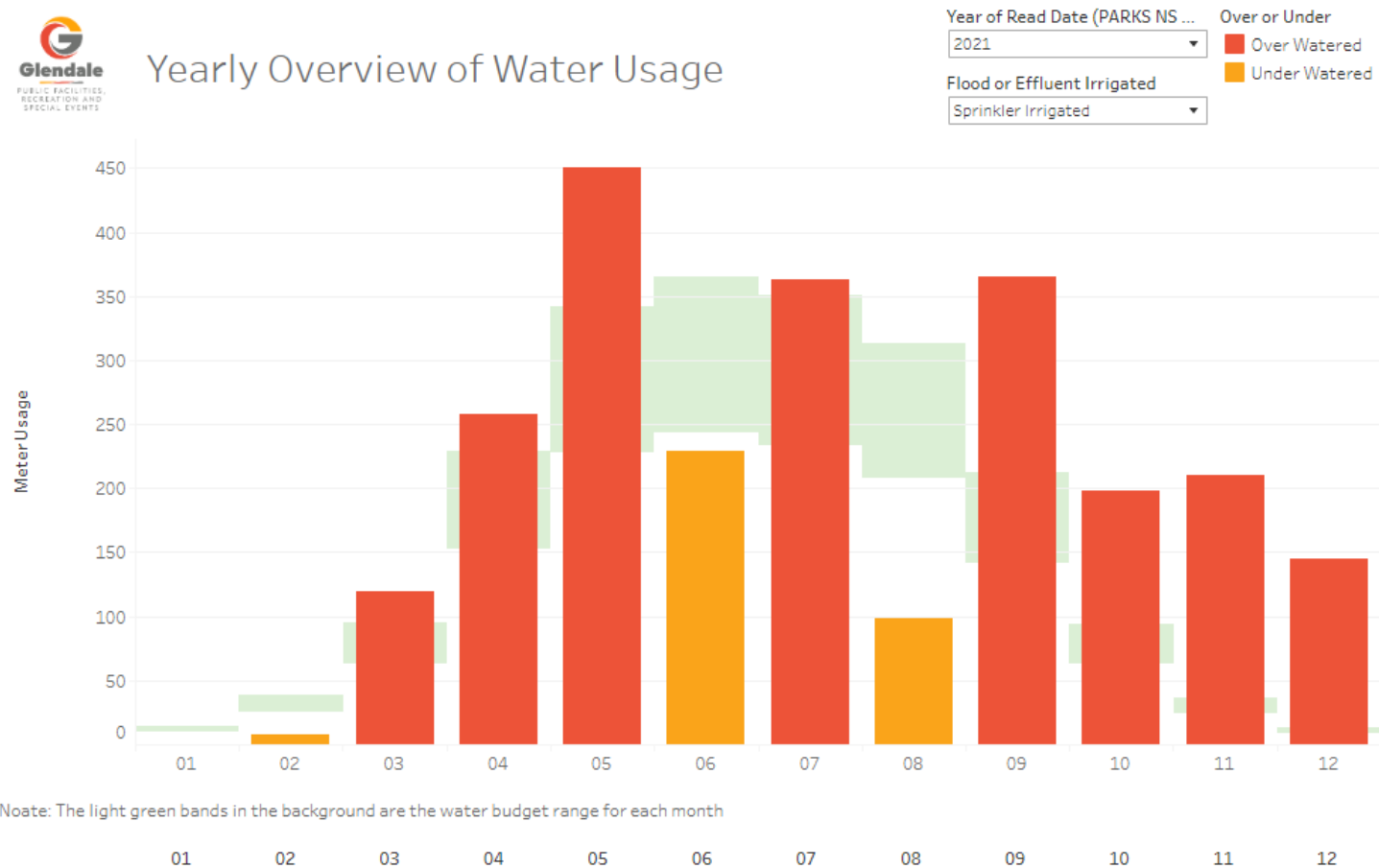




Landscape Water Budget Dashboard for Parks



Yearly Overview of Water Usage



Water Efficiency Assessments

- Free service for customers to help identify leaks and other inefficiencies.
 - 19 city facilities, 2.59 million gallons of water



Questions

